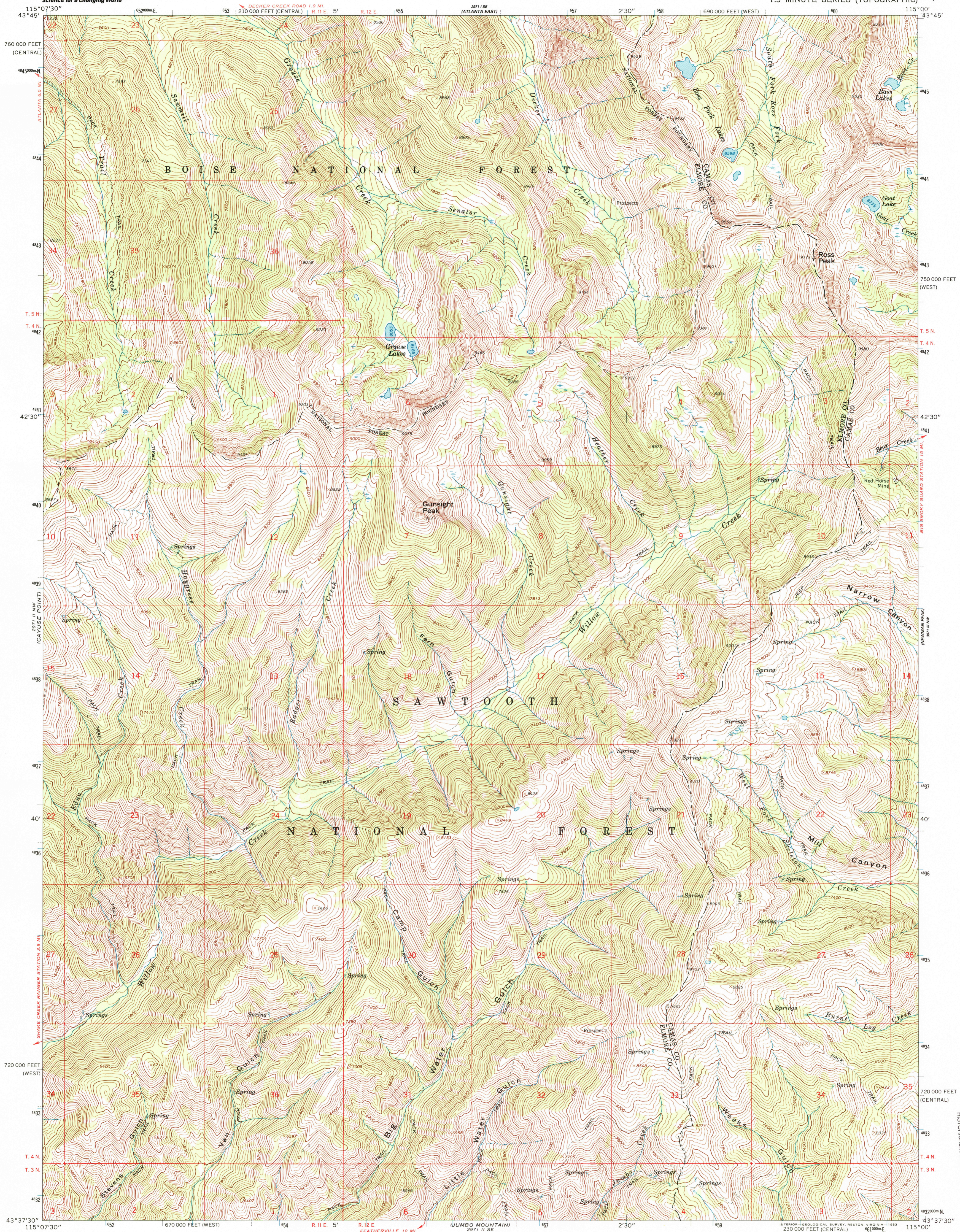




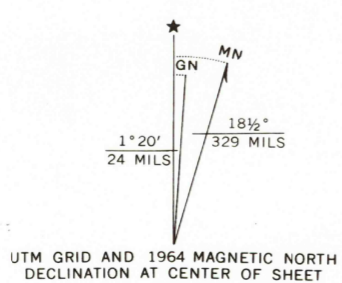
U.S. DEPARTMENT OF THE INTERIOR  
U.S. GEOLOGICAL SURVEY

ROSS PEAK QUADRANGLE  
IDAHO  
7.5 MINUTE SERIES (TOPOGRAPHIC)



Mapped, edited, and published by the Geological Survey

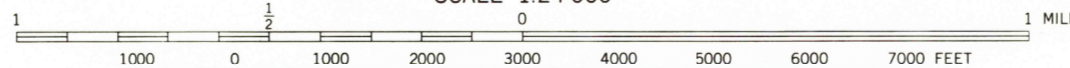
Control by USGS and USC&GS  
Topography by photogrammetric methods from aerial photographs taken 1959. Field checked 1964  
Polyconic projection. 1927 North American datum 10,000-foot grids based on Idaho coordinate system, west and central zones  
1000-meter Universal Transverse Mercator grid ticks, zone 11, shown in blue  
To place on the predicted North American Datum 1983, move the projection lines 14 meters north and 74 meters east as shown by dashed corner ticks  
Where omitted, land lines have not been established  
There may be private inholdings within the boundaries of the National or State reservations shown on this map



UTM GRID AND 1964 MAGNETIC NORTH DECLINATION AT CENTER OF SHEET



SCALE 1:24 000



CONTOUR INTERVAL 40 FEET  
NATIONAL GEODETIC VERTICAL DATUM OF 1929

THIS MAP COMPLIES WITH NATIONAL MAP ACCURACY STANDARDS  
FOR SALE BY U.S. GEOLOGICAL SURVEY, P.O. BOX 25286, DENVER, COLORADO 80225  
A FOLDER DESCRIBING TOPOGRAPHIC MAPS AND SYMBOLS IS AVAILABLE ON REQUEST

Map photoinspected 1976  
No major culture or drainage changes observed



QUADRANGLE LOCATION

ROAD CLASSIFICATION  
Unimproved dirt = - - - - - Trails = - - - - -

ROSS PEAK, IDAHO  
N4337.5—W115007.5

1964  
PHOTOINSPECTED 1976  
DMA 2971 II NE—SERIES Y993

RECEIVED  
OCT 31 1999

USGS M&D  
HISTORICAL MAP ARCHIVES

