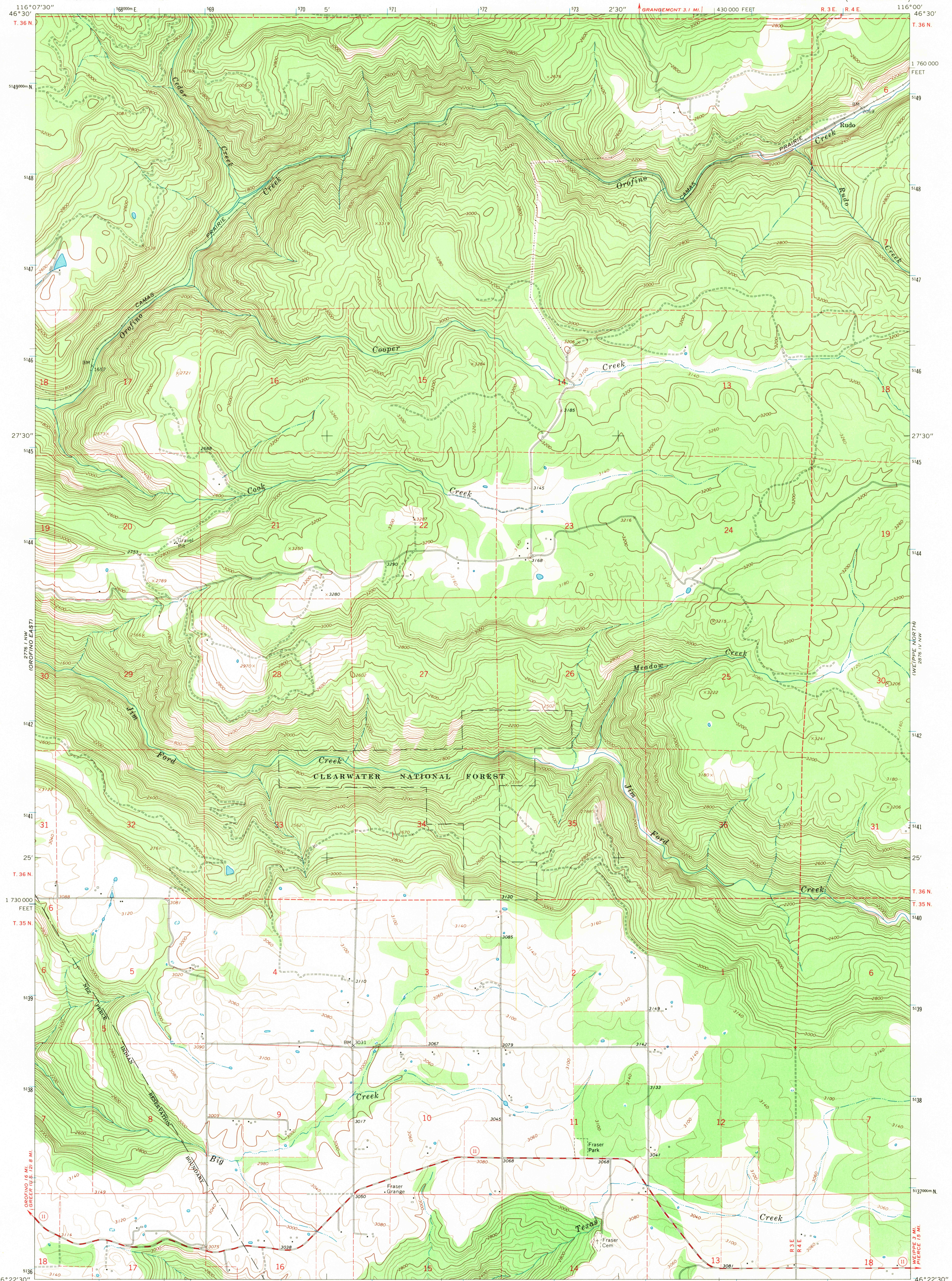
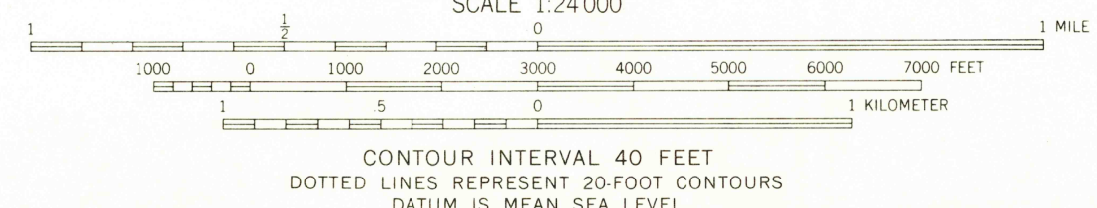
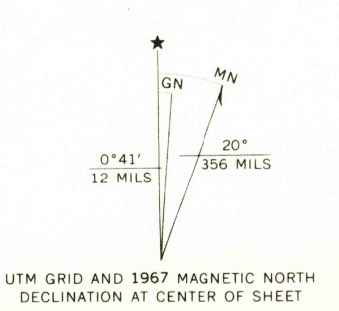


HEADQUARTERS 1:62 5000



Mapped, edited, and published by the Geological Survey  
Control by USGS and USC&GS  
Topography by photogrammetric methods from aerial  
photographs taken 1966. Field checked 1967  
Polyconic projection. 1927 North American datum  
10,000-foot grid based on Idaho coordinate system,  
west zone  
1000-meter Universal Transverse Mercator grid ticks,  
zone 11, shown in blue  
Fine red dashed lines indicate selected fence lines  
Certain land lines are omitted because of insufficient data



USGS  
Historical File  
Topographic Division

ROAD CLASSIFICATION

- Medium-duty
- Light-duty
- Unimproved dirt
- State Route



U.S.G.S.  
**FILE COPY**  
TOPOGRAPHIC DIVISION

RUDO, IDAHO  
N4622.5—W11600/7.5  
1967  
AMS 2776 1 NE—SERIES W893

2320  
FEB 10 1971