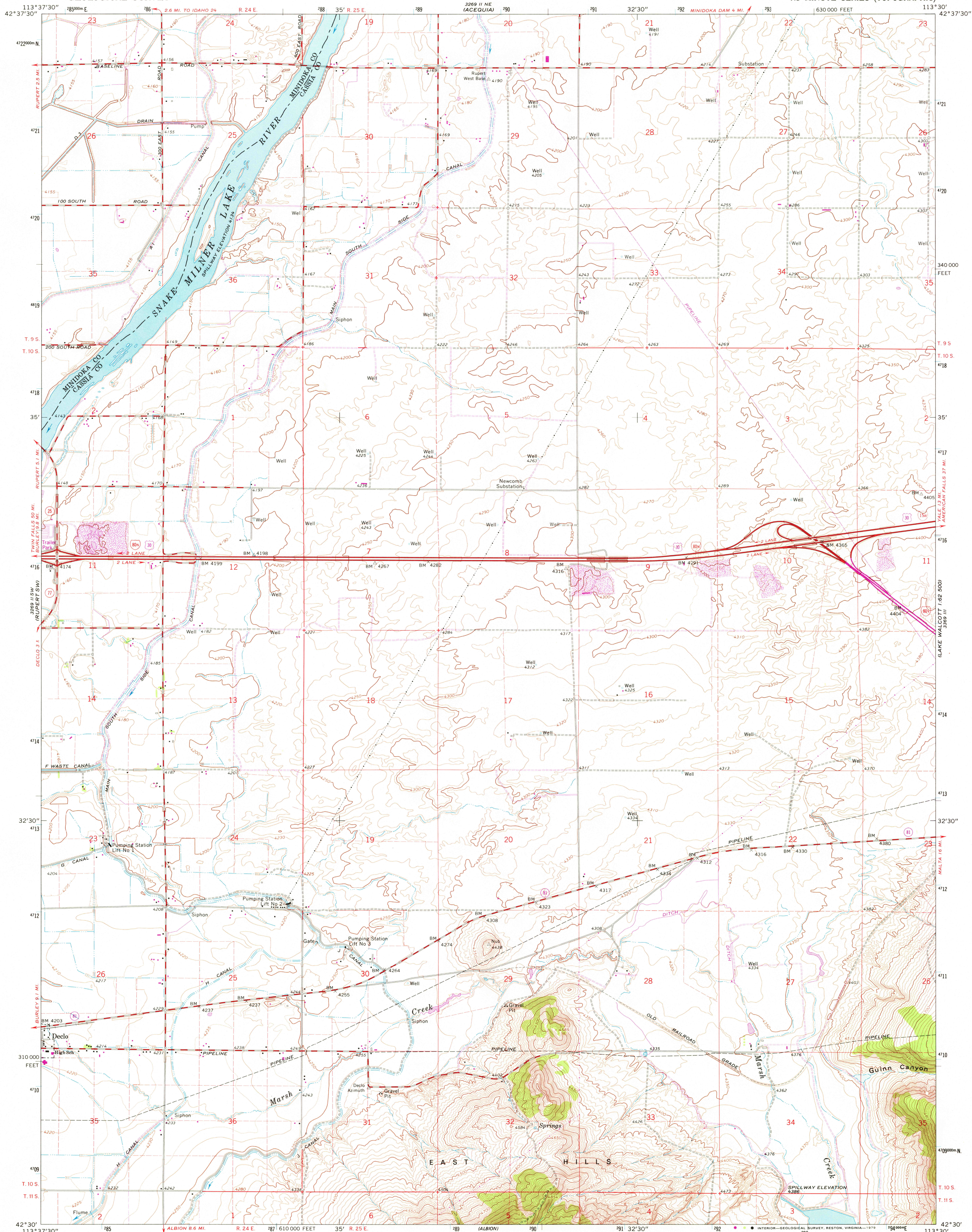




3269 II NE  
LAKE WALCOTT  
1:62,500



Mapped, edited, and published by the Geological Survey

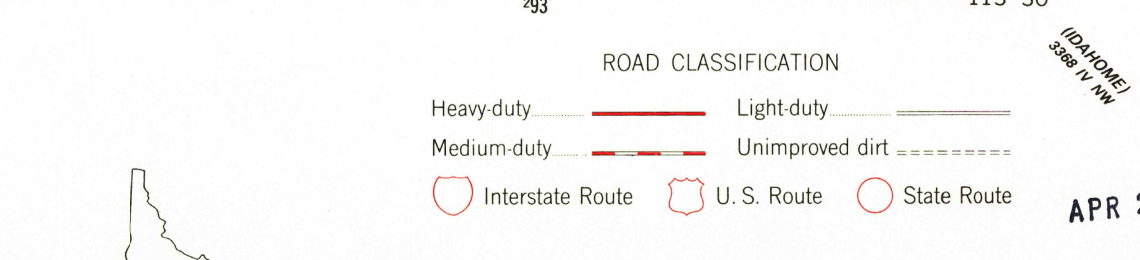
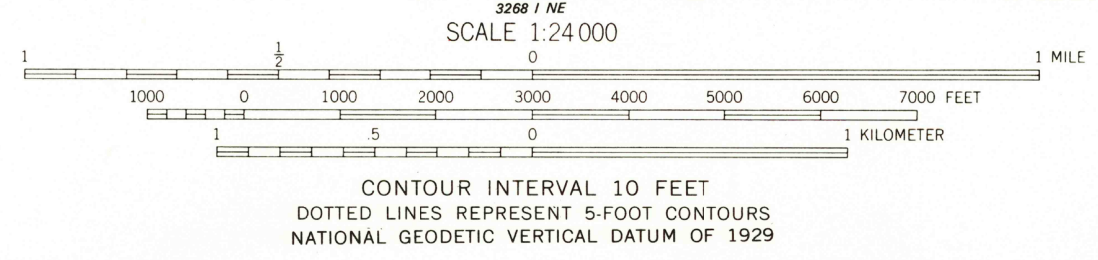
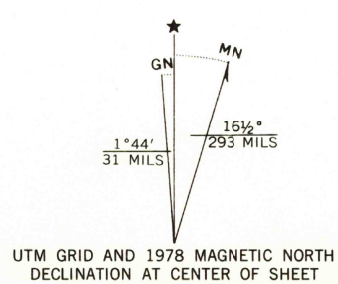
Control by USGS and USC&GS

Topography by photogrammetric methods from aerial photographs taken 1962. Field checked 1964

Polyconic projection. 1927 North American datum 10,000-foot grid based on Idaho coordinate system, central zone 1000-meter Universal Transverse Mercator grid ticks, zone 12, shown in blue

Fine red dashed lines indicate selected fence lines

Revisions shown in purple compiled from aerial photographs taken 1976 and other source data. This information not field checked. Map edited 1978



THIS MAP COMPLIES WITH NATIONAL MAP ACCURACY STANDARDS FOR SALE BY U. S. GEOLOGICAL SURVEY, DENVER, COLORADO 80225, OR RESTON, VIRGINIA 22092 A FOLDER DESCRIBING TOPOGRAPHIC MAPS AND SYMBOLS IS AVAILABLE ON REQUEST



USGS  
Historical File  
Topographic Division

RUPERT SE, IDAHO  
N4230-W11330/7.5  
1964  
PHOTOREVISED 1978  
AMS 3269 II SE--SERIES V893

APR 26 1979

2300