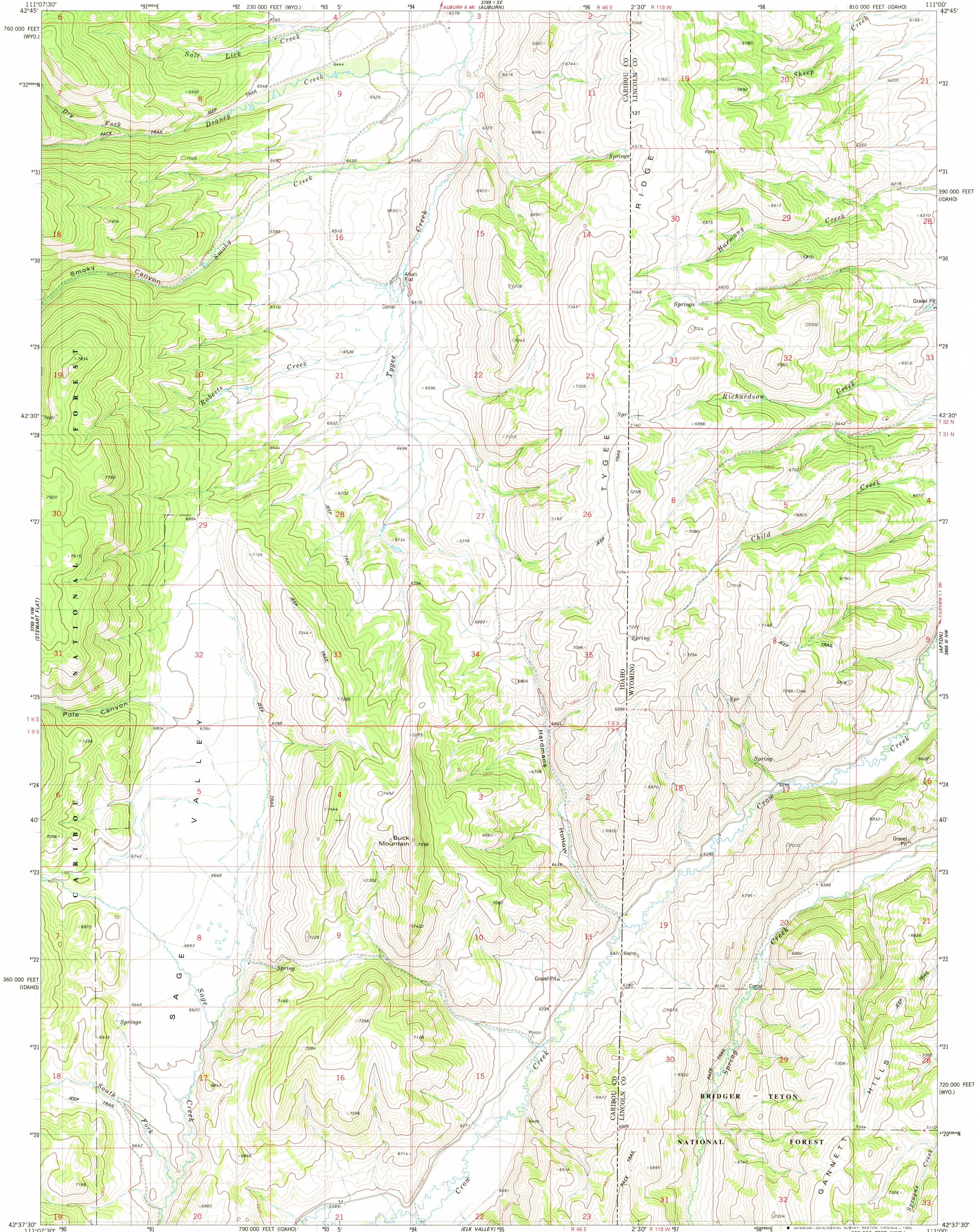
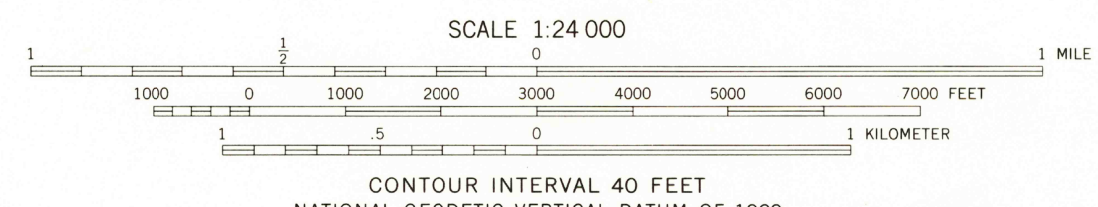
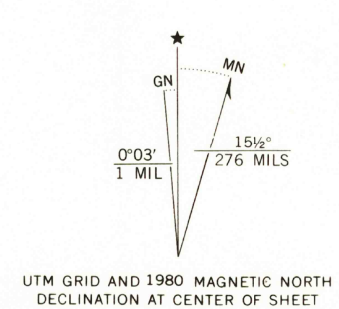


UNITED STATES
DEPARTMENT OF THE INTERIOR
GEOLOGICAL SURVEY

SAGE VALLEY QUADRANGLE
IDAHO-WYOMING
7.5 MINUTE SERIES (TOPOGRAPHIC)
NE/4 CROW CREEK 15' QUADRANGLE



Mapped, edited, and published by the Geological Survey
Control by USGS and NOS/NOAA
Topography by photogrammetric methods from aerial photographs taken 1971 and 1973. Field checked 1974. Map edited 1980
Projection: Idaho coordinate system, east zone (transverse Mercator)
10 000-foot grid ticks based on Idaho coordinate system, east zone and Wyoming coordinate system, west zone
1000-meter Universal Transverse Mercator grid, zone 12
1927 North American datum
To place on the predicted North American Datum 1983 move the projection lines 11 meters north and 63 meters east as shown by dashed corner ticks
Fine red dashed lines indicate selected fence lines
There may be private inholdings within the boundaries of the National or State reservations shown on this map



ROAD CLASSIFICATION

- Primary highway, hard surface
- Secondary highway, hard surface
- Unimproved road
- Light-duty road, hard or improved surface
- Interstate Route
- U. S. Route
- State Route

QUADRANGLE LOCATION

SAGE VALLEY, IDAHO-WYO.
NE/4 CROW CREEK 15' QUADRANGLE
N4237.5-W11100/7.5
1980
DMA 3789 II NE-SERIES V893

NOV - 5 1980

2700

THIS MAP COMPLIES WITH NATIONAL MAP ACCURACY STANDARDS
FOR SALE BY U. S. GEOLOGICAL SURVEY, DENVER, COLORADO 80225, OR RESTON, VIRGINIA 22092
A FOLDER DESCRIBING TOPOGRAPHIC MAPS AND SYMBOLS IS AVAILABLE ON REQUEST