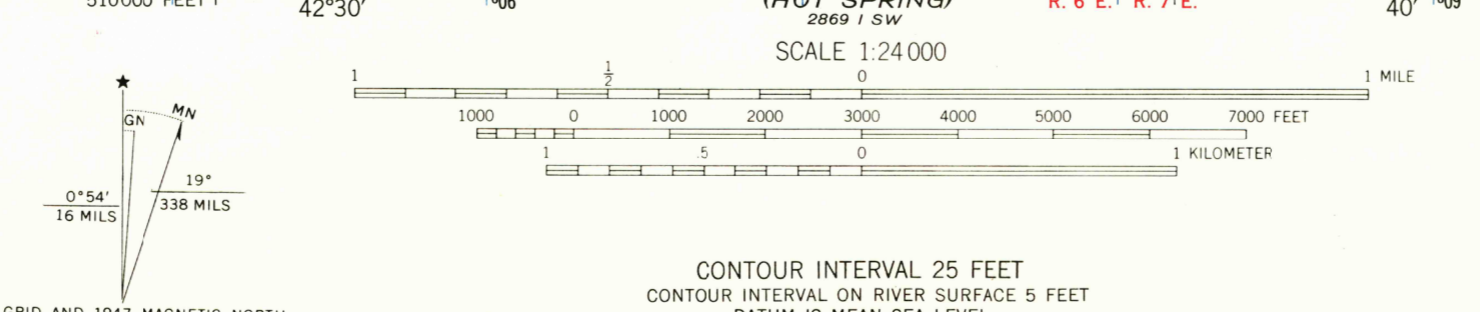




Mapped, edited, and published by the Geological Survey
Control by USC & GS
Culture and drainage in part compiled from
aerial photographs taken 1946
Topography by plane-table methods, 1946-1947
Polyconic projection. 1927 North American datum
10000 foot grid based on Idaho coordinate system,
west zone
1000-meter Universal Transverse Mercator grid ticks,
zone 11, shown in blue



USGS
Historical File
Topographic Division
HISTORICAL
U.S.G.S.
FILE COPY
TOPOGRAPHIC DIVISION
ROAD CLASSIFICATION
HARD-SURFACE ALL WEATHER ROADS DRY WEATHER ROADS
Heavy-duty 2 LANE LANE Improved dirt
Medium-duty 1 LANE LANE Unimproved dirt
Loose-surface, graded, or narrow hard-surface
U. S. Route State Route

THIS MAP COMPLIES WITH NATIONAL MAP ACCURACY STANDARDS
FOR SALE BY U. S. GEOLOGICAL SURVEY, DENVER, COLORADO 80225 OR WASHINGTON, D. C. 20242
A FOLDER DESCRIBING TOPOGRAPHIC MAPS AND SYMBOLS IS AVAILABLE ON REQUEST

SAND DUNES, IDAHO
N4252.5-W11537.5/7.5
1947
AMS 2869 1 NW-SERIES V893
1275
JUN 7 1966
HISTORICAL