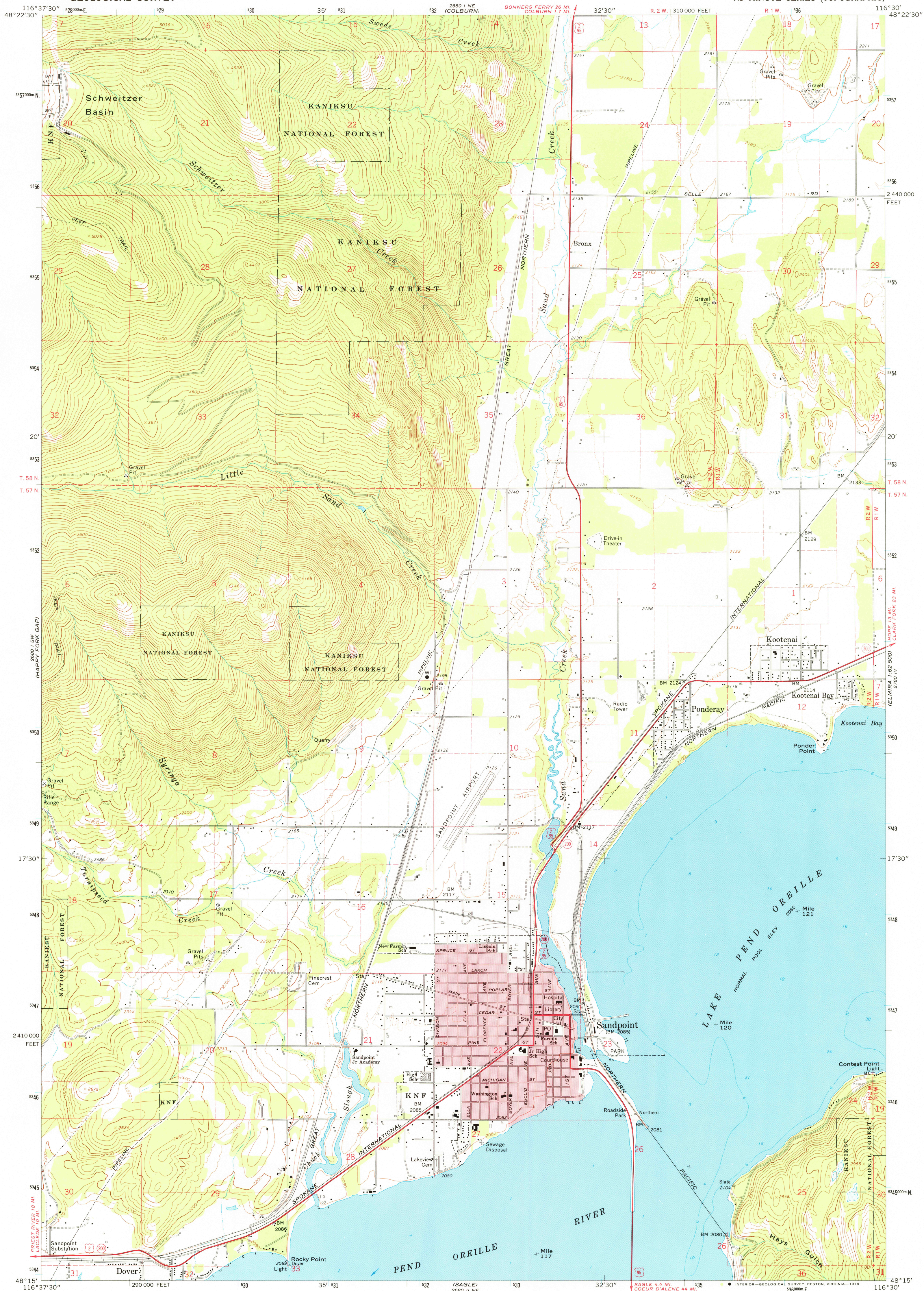


UNITED STATES
DEPARTMENT OF THE INTERIOR
GEOLOGICAL SURVEY

SANDPOINT QUADRANGLE
IDAHO-BONNER CO.
7.5 MINUTE SERIES (TOPOGRAPHIC)



Mapped, edited, and published by the Geological Survey

Control by USGS and USC&GS

Topography by photogrammetric methods from aerial

photographs taken 1966. Field checked 1968

Selected hydrographic data compiled from USC&GS

Chart 6170 (1967)

This information is not intended for navigational purposes

Polyconic projection. 1927 North American datum

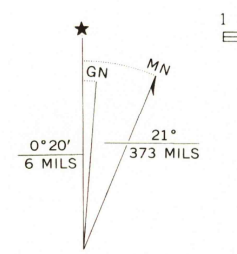
10,000-foot grid based on Idaho coordinate system,

west zone, 1000-meter Universal Transverse Mercator grid ticks,

zone 11, shown in blue

Red tint indicates areas in which only landmark buildings are shown

Fine red dashed lines indicate selected fence lines



CONTOUR INTERVAL 40 FEET
DOTTED LINES REPRESENT 20-FOOT CONTOURS
NATIONAL GEODETIC VERTICAL DATUM OF 1929
DEPTH CURVES AND SOUNDINGS IN FEET-DATUM IS LAKE ELEVATION 2048 FEET

THIS MAP COMPLIES WITH NATIONAL MAP ACCURACY STANDARDS
FOR SALE BY U.S. GEOLOGICAL SURVEY, DENVER, COLORADO 80225, OR RESTON, VIRGINIA 22092
A FOLDER DESCRIBING TOPOGRAPHIC MAPS AND SYMBOLS IS AVAILABLE ON REQUEST

ROAD CLASSIFICATION
Primary highway, all weather, hard surface
Light-duty road, all weather, improved surface
Unimproved road, fair or dry weather
U.S. Route
State Route



USGS
Historical File
Topographic Division

SANDPOINT, IDAHO
N4815-W11630/7.5
1968

AMS 2680 1 SE-SERIES V893

JUN 0 8 1978

4750