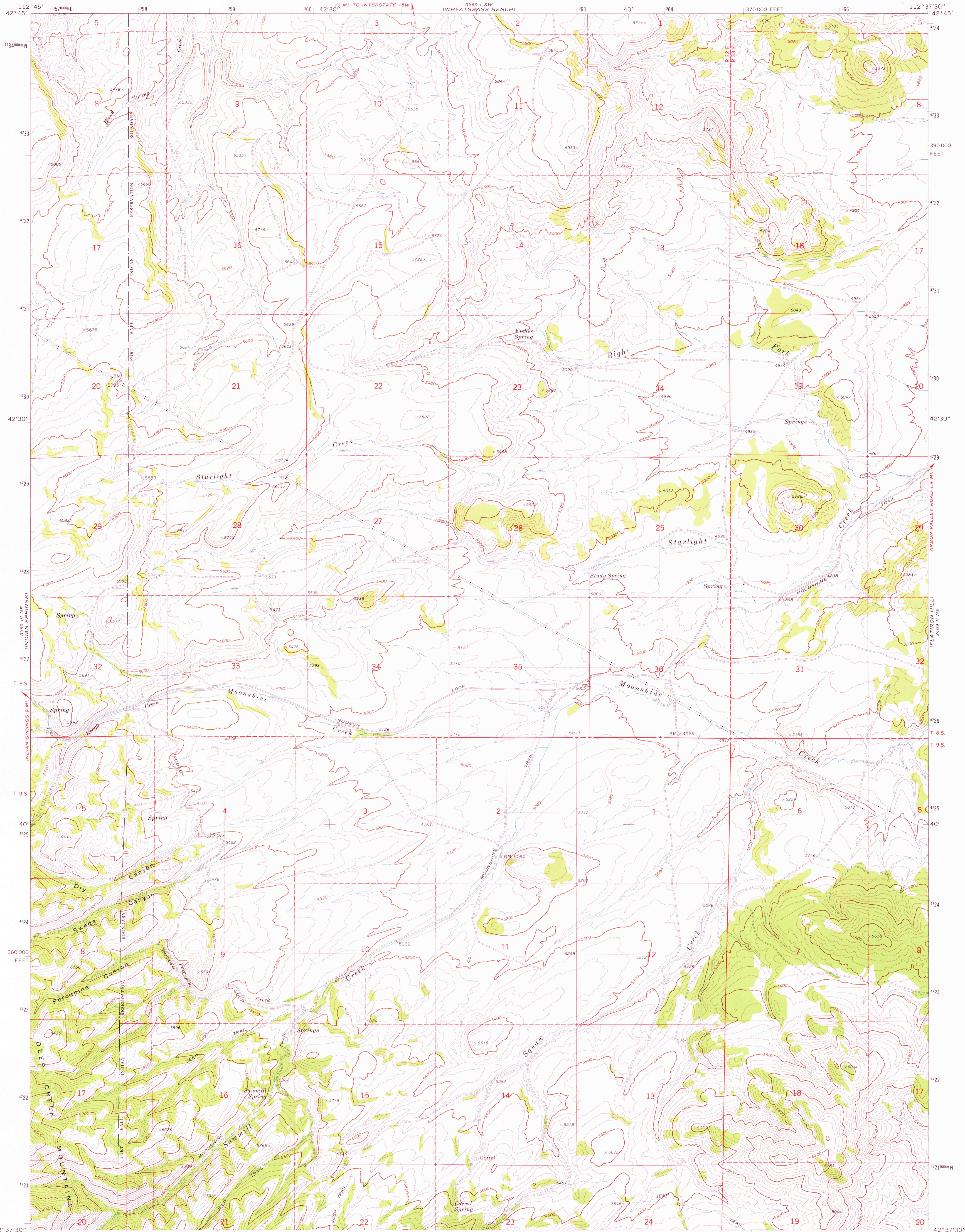


UNITED STATES
DEPARTMENT OF THE INTERIOR
GEOLOGICAL SURVEY

SAWMILL CREEK QUADRANGLE
IDAHO—POWER CO.
7.5 MINUTE SERIES (TOPOGRAPHIC)
NW 1/4 ARRON 15' QUADRANGLE



Mapped, edited, and published by the Geological Survey

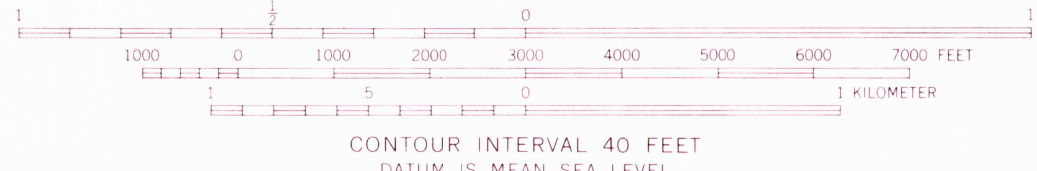
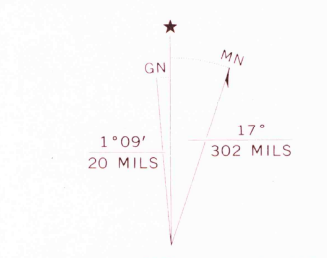
Control by USGS and USC&GS

Topography by photogrammetric methods from aerial photographs taken 1969. Field checked 1971

Projection and 10,000-foot grid ticks: Idaho coordinate system, east zone (transverse Mercator)

1000-meter Universal Transverse Mercator grid ticks, zone 12, shown in blue. 1927 North American datum

Fine red dashed lines indicate selected fence lines



ROAD CLASSIFICATION	
Primary highway, hard surface	Light-duty road, hard or improved surface
Secondary highway, hard surface	Unimproved road
Interstate Route	U. S. Route
	State Route

SAWMILL CREEK, IDAHO
NW 1/4 ARRON 15' QUADRANGLE
N4237.5—W11237.5/7.5

1971

AMS 3469 II NW-SERIES V893

THIS MAP COMPLIES WITH NATIONAL MAP ACCURACY STANDARDS
FOR SALE BY U. S. GEOLOGICAL SURVEY, DENVER, COLORADO 80225, OR WASHINGTON, D. C. 20242
A FOLDER DESCRIBING TOPOGRAPHIC MAPS AND SYMBOLS IS AVAILABLE ON REQUEST

APR 02 1974

3315