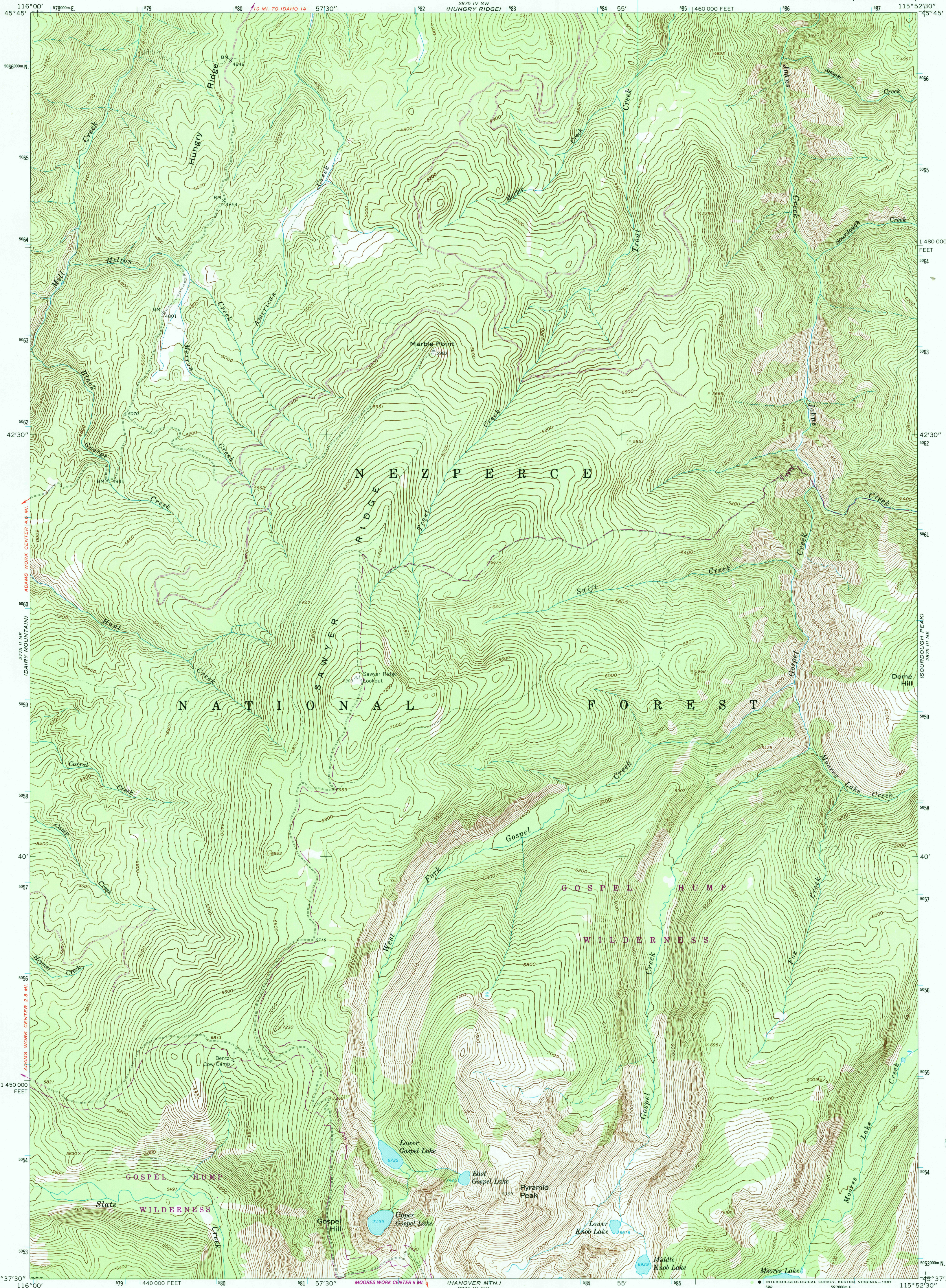


UNITED STATES
DEPARTMENT OF THE INTERIOR
GEOLOGICAL SURVEY

SAWYER RIDGE QUADRANGLE
IDAHO-IDAHO CO.
7.5 MINUTE SERIES (TOPOGRAPHIC)



USGS NMD HISTORICAL MAP
SEP 18 1987
REC'D FILE COPY

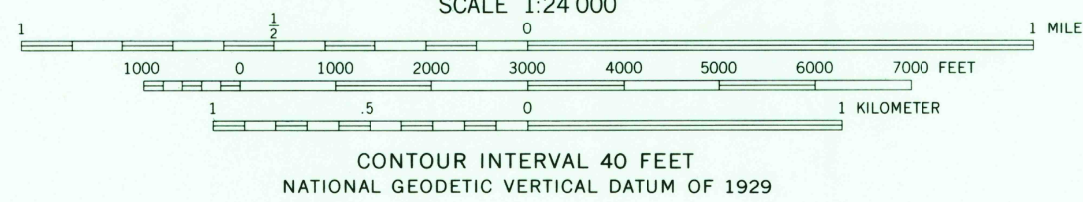
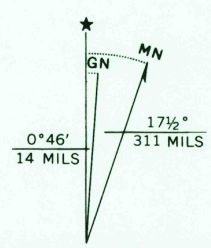
Mapped, edited, and published by the Geological Survey
Control by USGS and NOS/NOAA

Topography by photogrammetric methods from aerial
photographs taken 1962. Field checked 1963
Polyconic projection. 1927 North American Datum
10,000-foot grid based on Idaho coordinate system, west zone
1000-meter Universal Transverse Mercator grid ticks,
zone 11, shown in blue

Where omitted, land lines have not been established
To place on the predicted North American Datum 1983
move the projection lines 15 meters north and
76 meters east as shown by dashed corner ticks

There may be private inholdings within the boundaries
of the National or State reservations shown on this map

Revisions shown in purple compiled from
aerial photographs taken 1984 and other
source data. Partial field check by
U. S. Forest Service. Map edited 1987



SAWYER RIDGE, IDAHO
45115-F8-TF-024

1963
PHOTOREVISED 1987
DMA 2875 III NW-SERIES V893