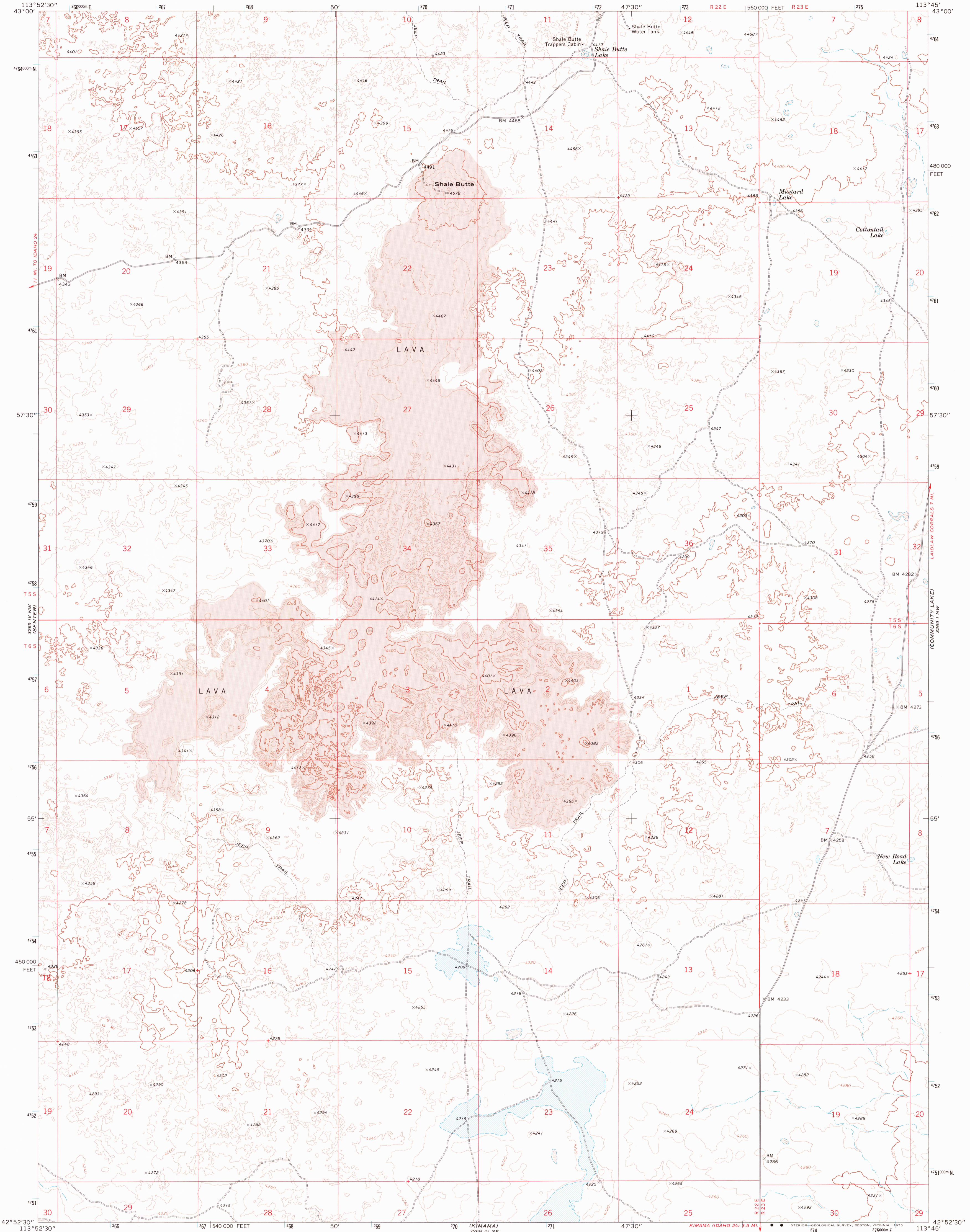
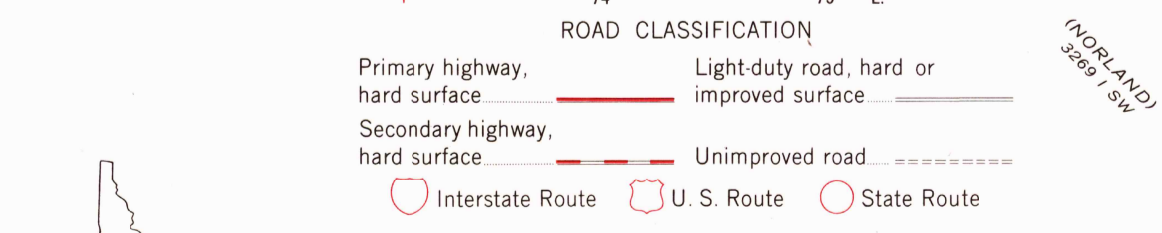
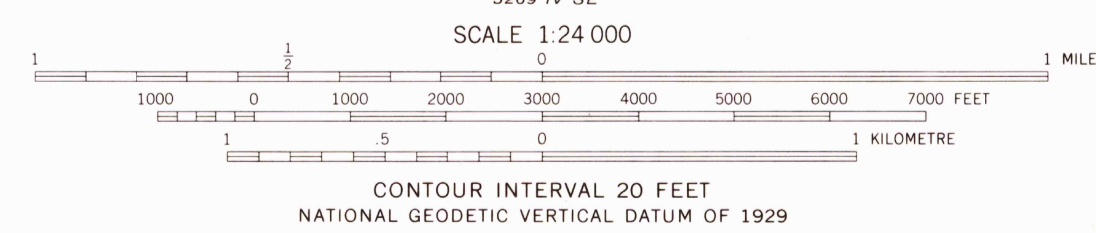
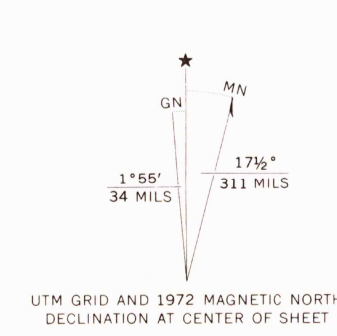


3269 IV NW  
(LAIDLAW LAKE)



Mapped, edited, and published by the Geological Survey  
Control by USGS and NOS/NOAA  
Topography by photogrammetric methods from aerial  
photographs taken 1971. Field checked 1972  
Projection and 10,000-foot grid ticks: Idaho coordinate  
system, central zone (transverse Mercator)  
1000-metre Universal Transverse Mercator grid ticks,  
zone 12, shown in blue. 1927 North American datum



THIS MAP COMPLIES WITH NATIONAL MAP ACCURACY STANDARDS  
FOR SALE BY U. S. GEOLOGICAL SURVEY, DENVER, COLORADO 80225, OR RESTON, VIRGINIA 22092  
A FOLDER DESCRIBING TOPOGRAPHIC MAPS AND SYMBOLS IS AVAILABLE ON REQUEST

USGS  
Historical File  
Topographic Division

SHALE BUTTE, IDAHO  
N4252.5—W11345.7.5  
1972  
AMS 3269 IV NE—SERIES V893

OCT 20 1976