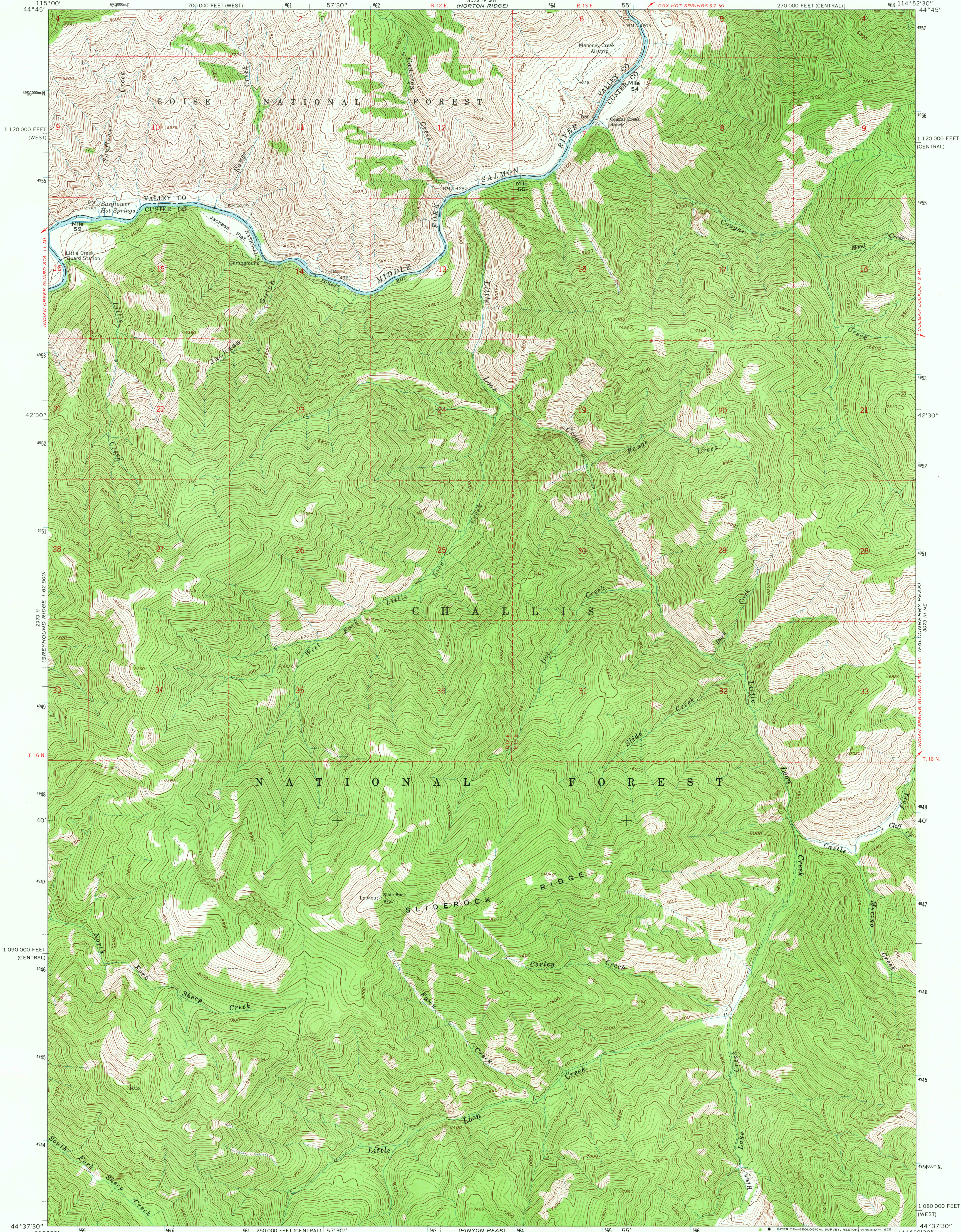
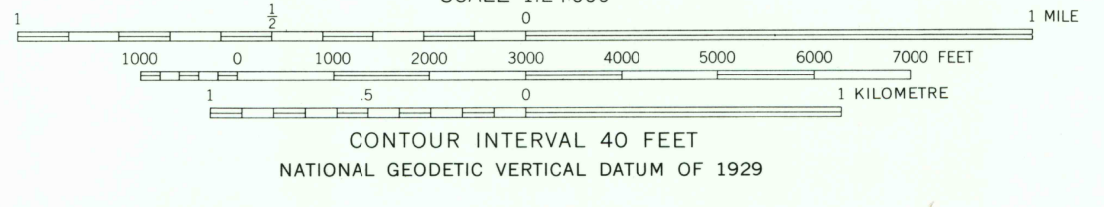
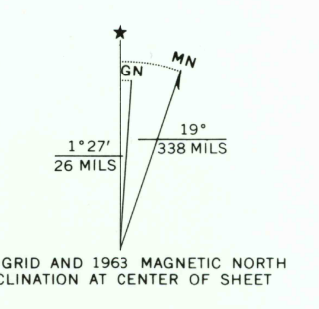


3073 III SE  
(RAMEY HILL)



Mapped, edited, and published by the Geological Survey  
Control by USGS and USC&GS  
Topography by photogrammetric methods from aerial photographs taken 1957. Field checked 1963  
Polyconic projection. 1927 North American datum  
10,000-foot grids based on Idaho coordinate system, central and west zones  
1000-metre Universal Transverse Mercator grid ticks, zone 11, shown in blue  
Where omitted, land lines have not been established



ROAD CLASSIFICATION  
Trails

THIS MAP COMPLIES WITH NATIONAL MAP ACCURACY STANDARDS  
FOR SALE BY U. S. GEOLOGICAL SURVEY, DENVER, COLORADO 80225, OR RESTON, VIRGINIA 22092  
A FOLDER DESCRIBING TOPOGRAPHIC MAPS AND SYMBOLS IS AVAILABLE ON REQUEST

SLIDEROCK RIDGE, IDAHO  
N4437.5—W11452.5/7.5  
1963  
AMS 3073 III NW—SERIES V893

USGS  
HISTORICAL FILE  
TOPOGRAPHIC DIVISION

2070

SEP 22 1975