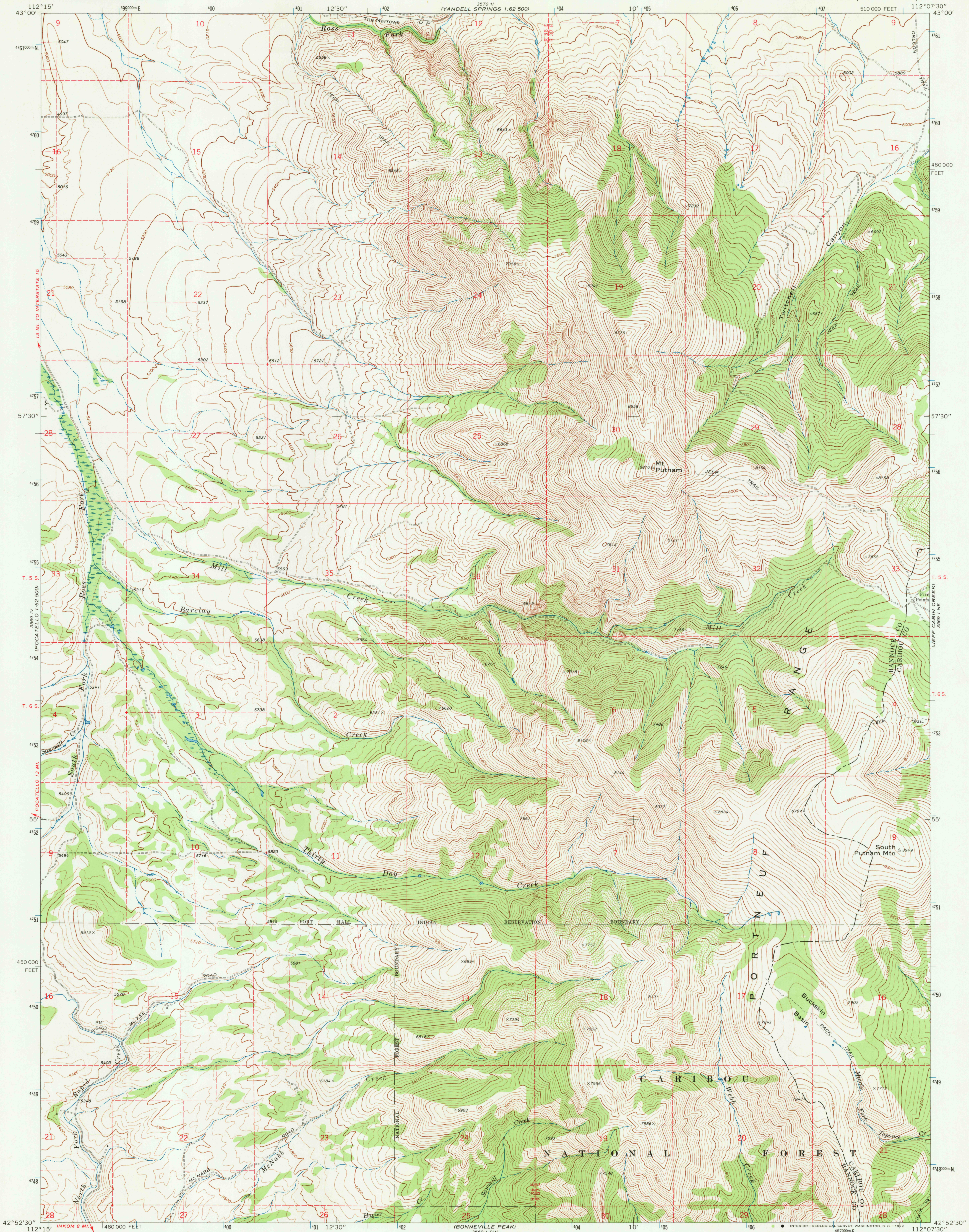


UNITED STATES
DEPARTMENT OF THE INTERIOR
GEOLOGICAL SURVEY

SOUTH PUTNAM MTN. QUADRANGLE
IDAHO
7.5 MINUTE SERIES (TOPOGRAPHIC)

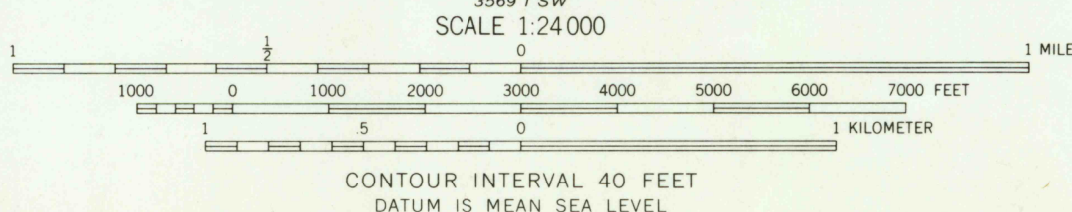
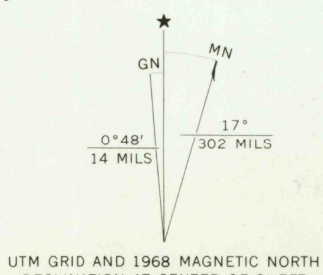


Mapped, edited, and published by the Geological Survey

Control by USGS and USC&GS

Topography by photogrammetric methods from aerial photographs taken 1967. Field checked 1968

Polyconic projection. 1927 North American datum
10,000-foot grid based on Idaho coordinate system,
east zone
1000-meter Universal Transverse Mercator grid ticks
zone 12, shown in blue
Fine red dashed lines indicate selected fence lines



ROAD CLASSIFICATION	
Primary highway, hard surface	Light-duty road, hard or improved surface
Secondary highway, hard surface	Unimproved road
Interstate Route	U. S. Route
	State Route



THIS MAP COMPLIES WITH NATIONAL MAP ACCURACY STANDARDS
FOR SALE BY U. S. GEOLOGICAL SURVEY, DENVER, COLORADO 80225, OR WASHINGTON, D. C. 20242
A FOLDER DESCRIBING TOPOGRAPHIC MAPS AND SYMBOLS IS AVAILABLE ON REQUEST

SOUTH PUTNAM MTN., IDAHO
N4252.5-W11207.5/7.5

1968

AMS 3569 1 NW-SERIES V893

USGS
HISTORICAL FILE
TOPOGRAPHIC DIVISION

2375
SEP 25 1972