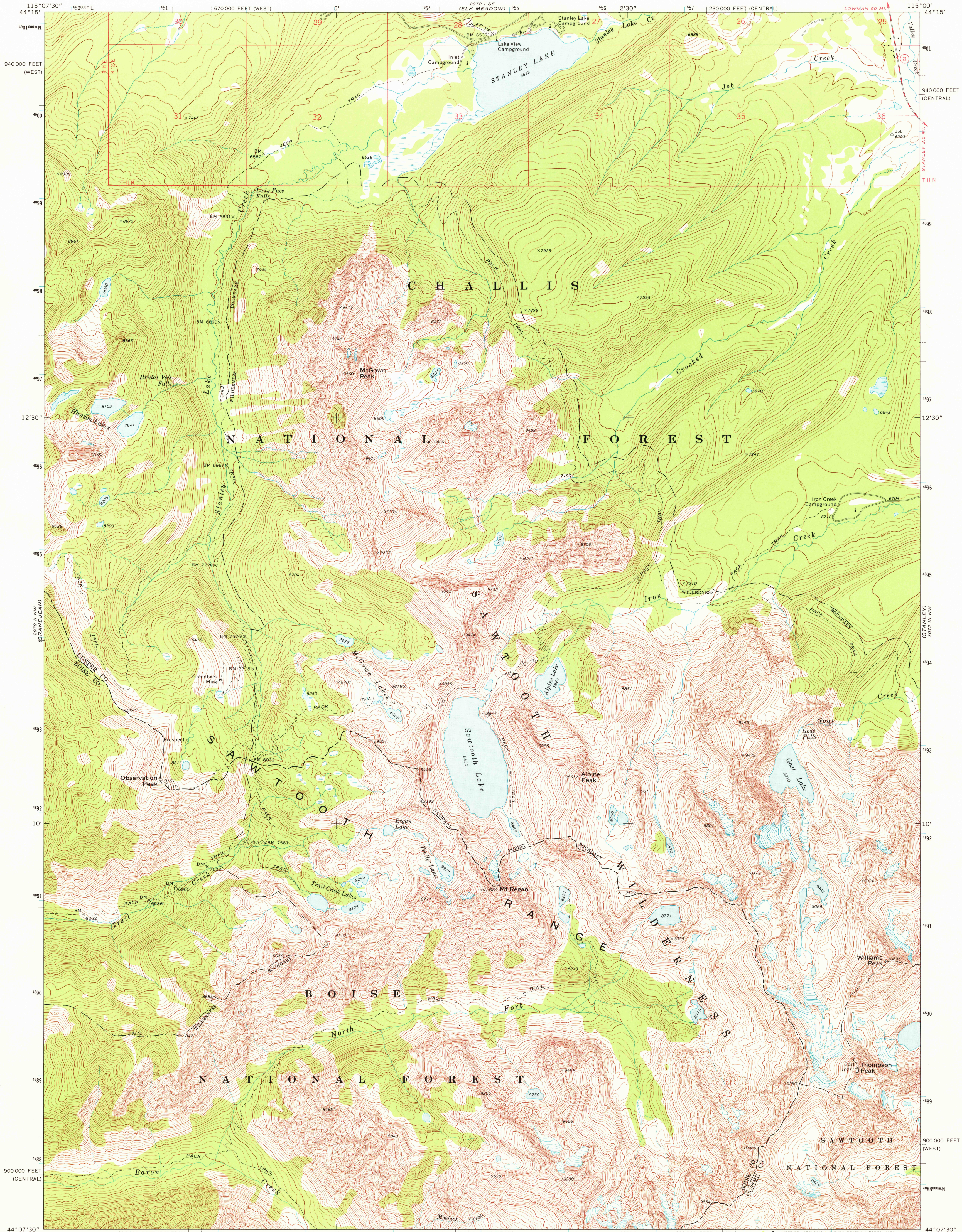
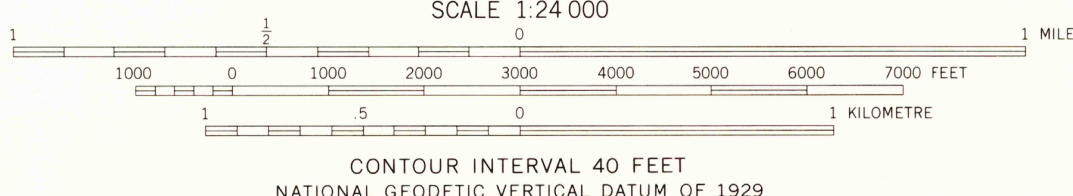
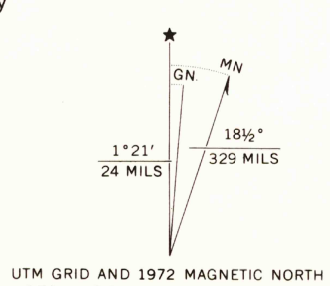


UNITED STATES
DEPARTMENT OF THE INTERIOR
GEOLOGICAL SURVEY

STANLEY LAKE QUADRANGLE
IDAHO
7.5 MINUTE SERIES (TOPOGRAPHIC)



Mapped, edited, and published by the Geological Survey
Control by USGS and NOS/NOAA
Topography by photogrammetric methods from aerial
photographs taken 1971. Field checked 1972
Projection: Idaho coordinate system, central zone
(transverse Mercator)
10,000-foot grid ticks based on Idaho coordinate
system, central zone and west zone
1000-metre Universal Transverse Mercator grid ticks,
zone 11, shown in blue. 1927 North American datum
Where omitted, land lines have not been established
Fine red dashed lines indicate selected fence lines
Entire area lies within the boundary
of the Sawtooth National Recreation Area



ROAD CLASSIFICATION
Primary highway,
hard surface
Secondary highway,
hard surface
Light-duty road, hard or
improved surface
Unimproved road
Interstate Route
U. S. Route
State Route



STANLEY LAKE, IDAHO
N4407.5-W11500/7.5

APR 08 1976

USGS
Historical File
Topographic Division

1972
AMS 2972 II NE-SERIES V893

THIS MAP COMPLIES WITH NATIONAL MAP ACCURACY STANDARDS
FOR SALE BY U. S. GEOLOGICAL SURVEY, DENVER, COLORADO 80225, OR RESTON, VIRGINIA 22092
A FOLDER DESCRIBING TOPOGRAPHIC MAPS AND SYMBOLS IS AVAILABLE ON REQUEST