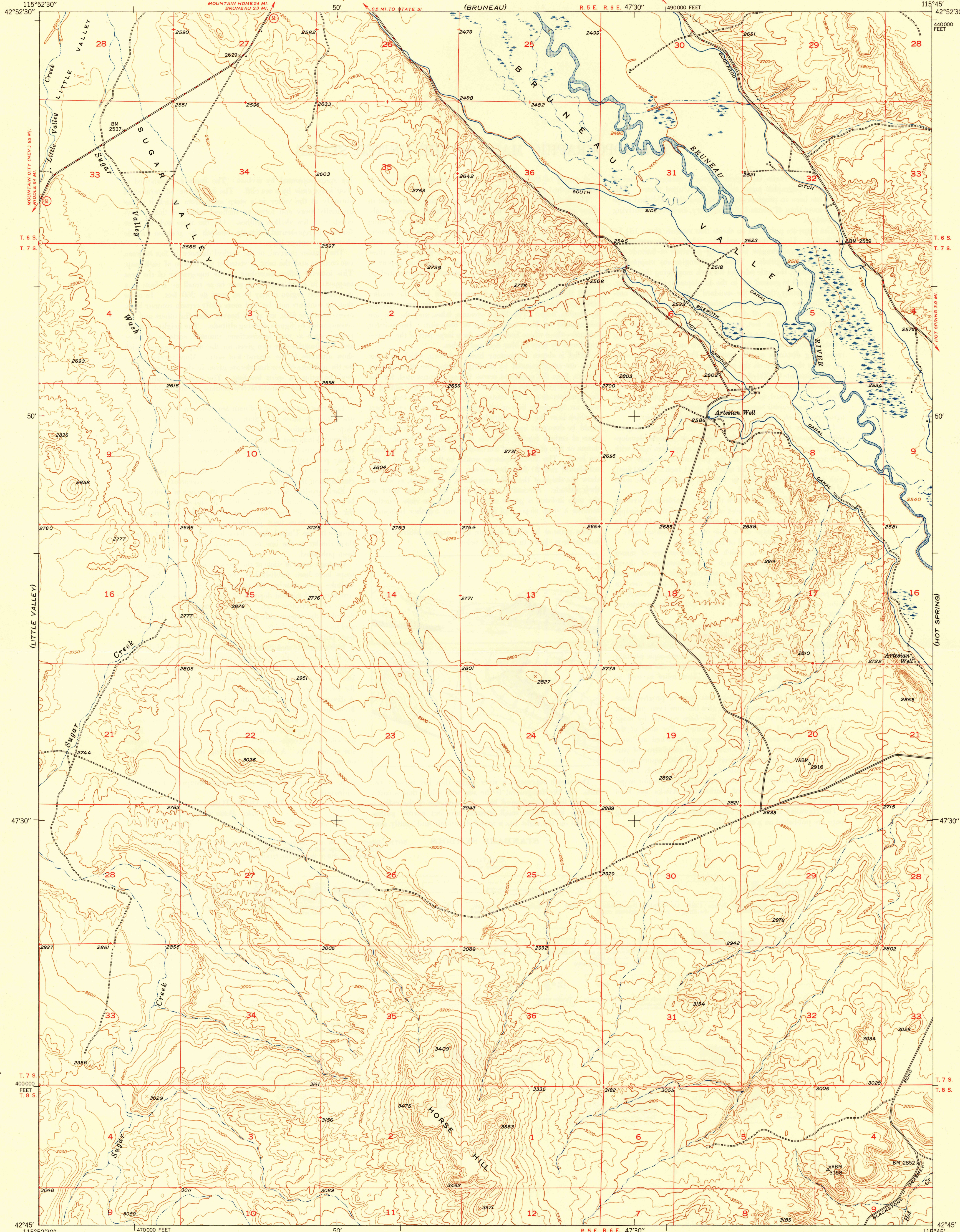


UNITED STATES  
DEPARTMENT OF THE INTERIOR  
GEOLOGICAL SURVEY

U. S. G. S.  
FILE COPY  
Inspection and Editing.

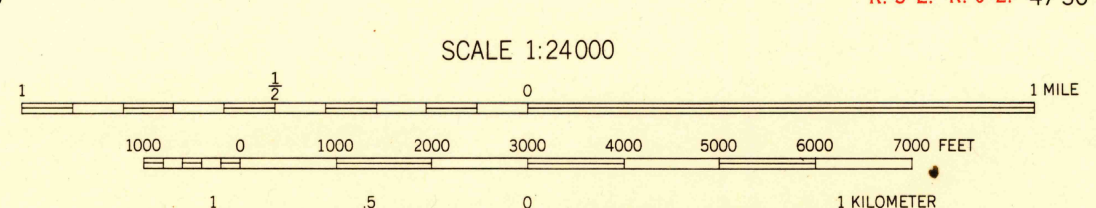
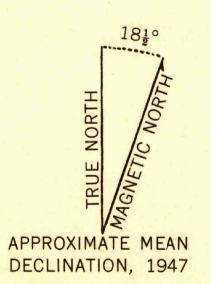
SUGAR VALLEY QUADRANGLE  
IDAHO-OWYHEE CO.  
7.5 MINUTE SERIES (TOPOGRAPHIC)



U. S. G. S.  
FILE COPY  
Inspection and Editing.

U. S. G. S.  
FILE COPY  
Inspection and Editing.

Mapped, edited, and published by the Geological Survey  
Control by USGS and USC & GS  
Culture and drainage in part compiled from  
aerial photographs taken 1946  
Topography by plane-table methods 1946-1947  
Polyconic projection. 1927 North American datum  
10000 foot grid based on Idaho coordinate system,  
West zone



CONTOUR INTERVAL 25 FEET  
CONTOUR INTERVAL ON RIVER SURFACE 5 FEET  
DATUM IS MEAN SEA LEVEL

THIS MAP COMPLIES WITH NATIONAL MAP ACCURACY STANDARDS  
FOR SALE BY U. S. GEOLOGICAL SURVEY, WASHINGTON 25, D. C.

USGS  
Historical File  
Topographic Division

U. S. G. S.  
FILE COPY  
Inspection and Editing.

ROAD CLASSIFICATION

HARD-SURFACE ALL WEATHER ROADS	DRY WEATHER ROADS
Heavy-duty, 4 LANE LANE	Improved dirt, 4 LANE LANE
Medium-duty, 4 LANE LANE	Unimproved dirt, 4 LANE LANE
Loose-surface, graded, or narrow hard-surface	
U. S. Route	State Route

SUGAR VALLEY, IDAHO  
N4245-W11545/7.5

PRINTED 1948

DEC 14 1948  
HISTORICAL

2120