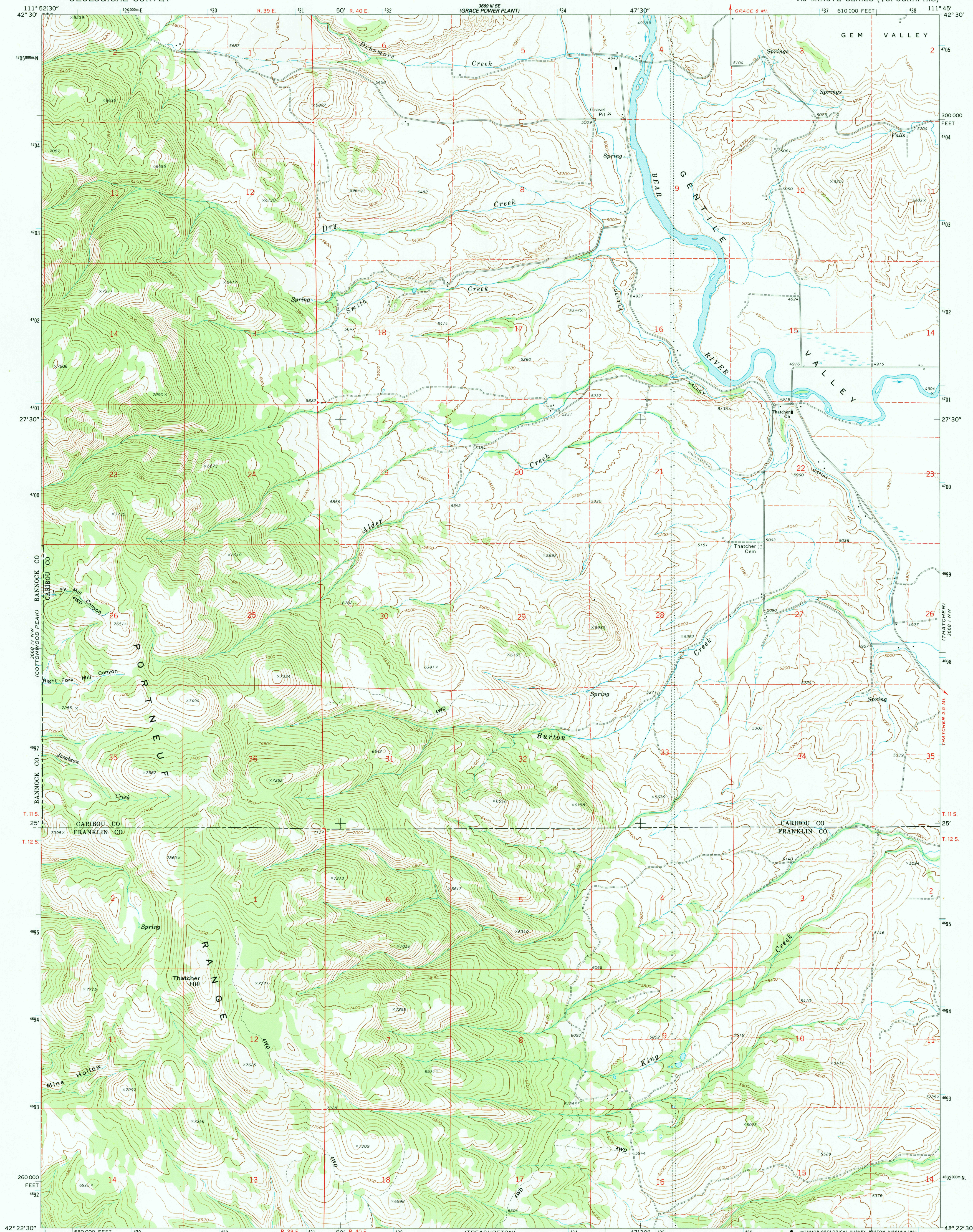


UNITED STATES  
DEPARTMENT OF THE INTERIOR  
GEOLOGICAL SURVEY

THATCHER HILL QUADRANGLE  
IDAHO  
7.5 MINUTE SERIES (TOPOGRAPHIC)



Mapped, edited, and published by the Geological Survey  
Control by USGS and NOS/NOAA

Topography by photogrammetric methods from aerial photographs  
taken 1968. Field checked 1969

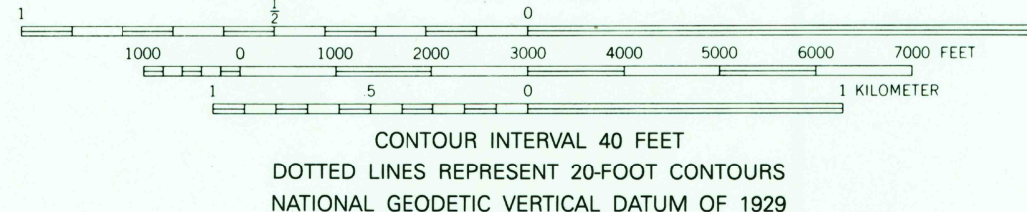
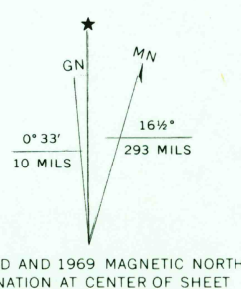
Polyconic projection. 1927 North American Datum  
10,000-foot grid based on Idaho coordinate system,  
east zone  
1000-meter Universal Transverse Mercator grid ticks, zone 12,  
shown in blue

The difference between 1927 North American Datum and North  
American Datum of 1983 (NAD 83) for 7.5 minute intersections is  
given in USGS Bulletin 1875. The NAD 83 is shown by dashed  
corner ticks

Fine red dashed lines indicate selected fence lines

Map photoinspected 1980

No major culture or drainage changes observed



THIS MAP COMPLIES WITH NATIONAL MAP ACCURACY STANDARDS  
FOR SALE BY U.S. GEOLOGICAL SURVEY, DENVER, COLORADO 80225, OR RESTON, VIRGINIA 22092  
A FOLDER DESCRIBING TOPOGRAPHIC MAPS AND SYMBOLS IS AVAILABLE ON REQUEST

RETURN TO:  
USGS AND HISTORICAL MAP ARCHIVES

ROAD CLASSIFICATION  
Primary highway, hard surface  
Secondary highway, hard surface  
Unimproved road  
Interstate Route  
U. S. Route  
State Route



THATCHER HILL, IDAHO

42111-D7-TF-024

1969

PHOTOINSPECTED 1980  
DMA 3668 IV NE-SERIES V893

THATCHER HILL  
ISBN # 0607179860 ID 024  
TF  
9 780607 179860