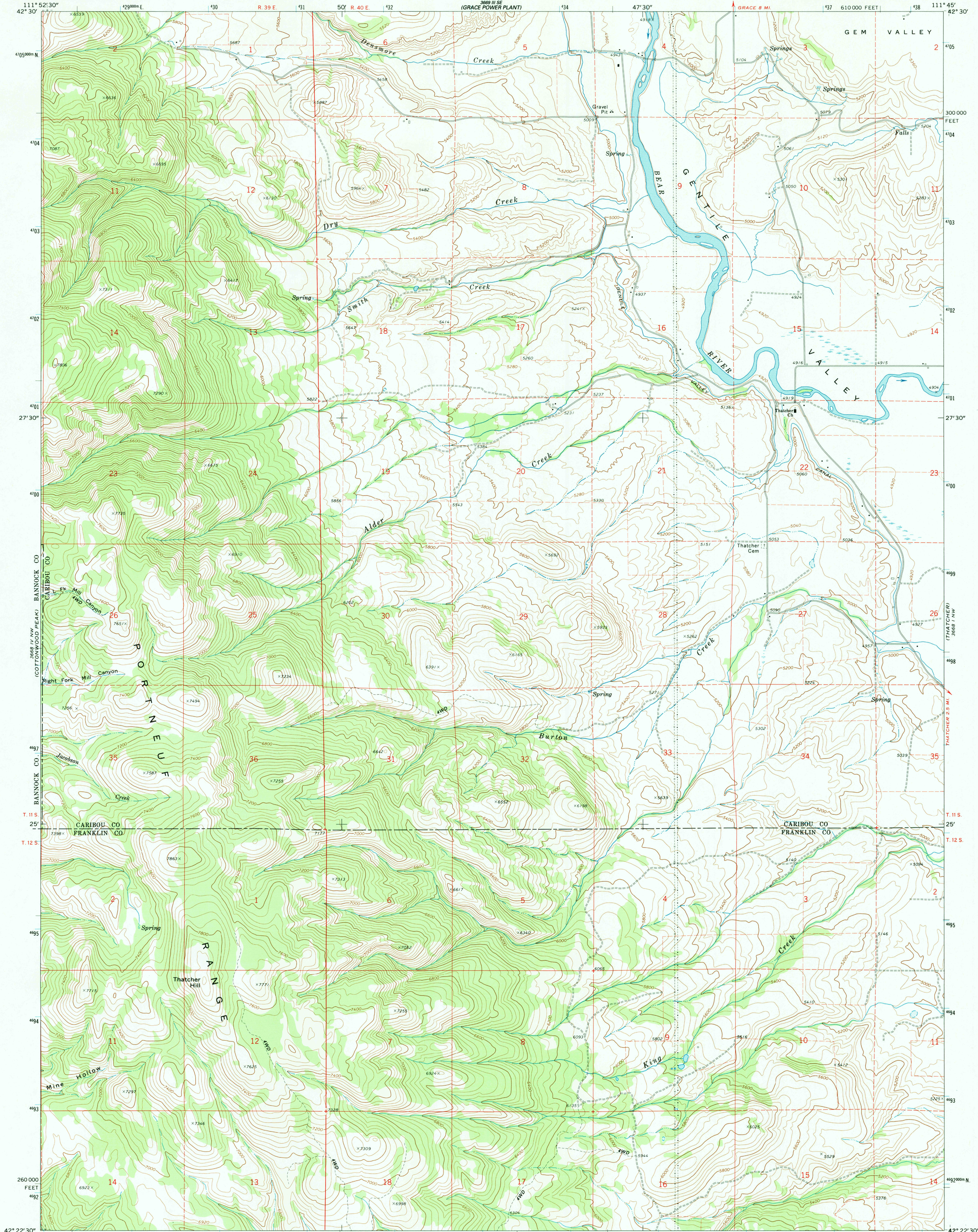


UNITED STATES
DEPARTMENT OF THE INTERIOR
GEOLOGICAL SURVEY

THATCHER HILL QUADRANGLE
IDAHO
7.5 MINUTE SERIES (TOPOGRAPHIC)



Mapped, edited, and published by the Geological Survey

Control by USGS and NOS/NOAA
Topography by photogrammetric methods from aerial photographs
taken 1968. Field checked 1969

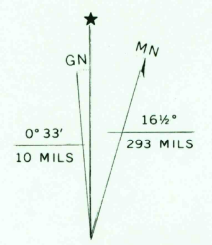
Polyconic projection. 1927 North American Datum
10,000-foot grid based on Idaho coordinate system,
east zone
1000-meter Universal Transverse Mercator grid ticks, zone 12,
shown in blue

The difference between 1927 North American Datum and North
American Datum of 1983 (NAD 83) for 7.5 minute intersections is
given in USGS Bulletin 1875. The NAD 83 is shown by dashed
corner ticks

Fine red dashed lines indicate selected fence lines

Map photoinspected 1980

No major culture or drainage changes observed



CONTOUR INTERVAL 40 FEET
DOTTED LINES REPRESENT 20-FOOT CONTOURS
NATIONAL GEODETIC VERTICAL DATUM OF 1929

THIS MAP COMPLIES WITH NATIONAL MAP ACCURACY STANDARDS
FOR SALE BY U.S. GEOLOGICAL SURVEY, DENVER, COLORADO 80225, OR RESTON, VIRGINIA 22092
A FOLDER DESCRIBING TOPOGRAPHIC MAPS AND SYMBOLS IS AVAILABLE ON REQUEST

ROAD CLASSIFICATION
Primary highway, hard surface
Secondary highway, hard surface
Unimproved road
Light-duty road, hard or improved surface
Unimproved road
Interstate Route
U. S. Route
State Route



USGS NMD HISTORICAL MAP
FEB 11 1991
REC'D FILE COPY

THATCHER HILL, IDAHO

42111-D7-TF-024

1969

PHOTOINSPECTED 1980
DMA 3668 IV NE-SERIES V893