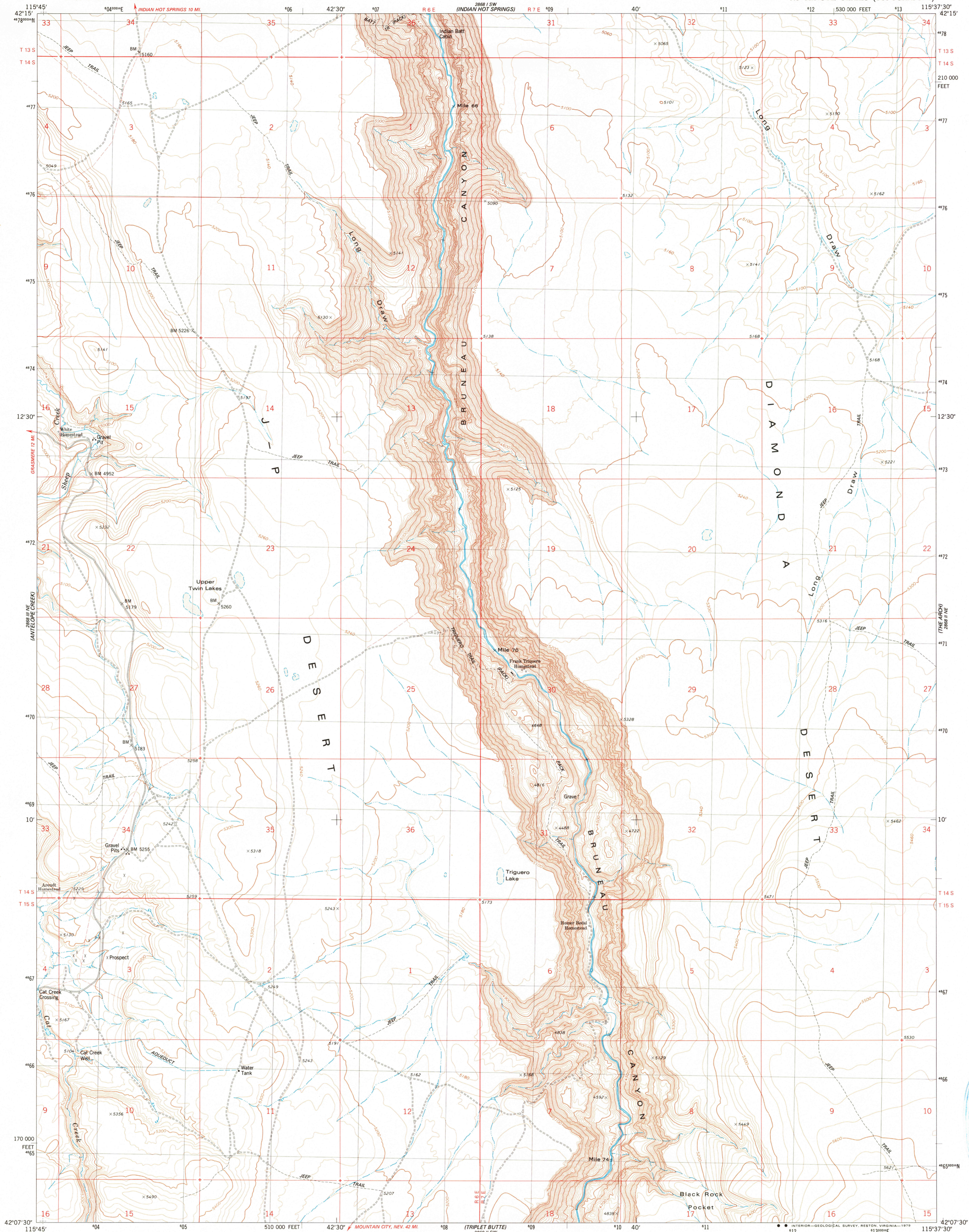
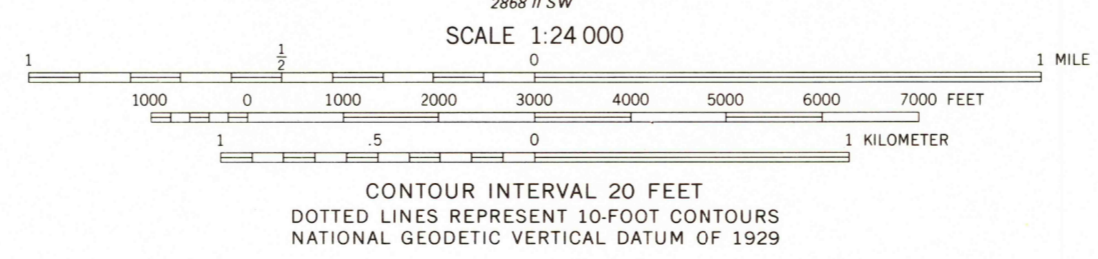
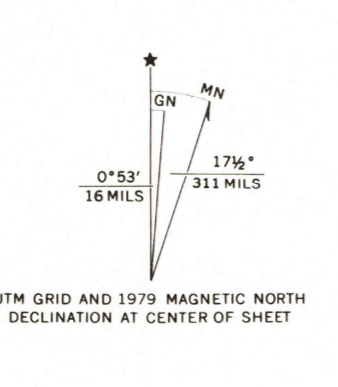


UNITED STATES  
DEPARTMENT OF THE INTERIOR  
GEOLOGICAL SURVEY

TRIGUERO LAKE QUADRANGLE  
IDAHO—OWYHEE CO.  
7.5 MINUTE SERIES (TOPOGRAPHIC)



Mapped, edited, and published by the Geological Survey  
Control by USGS and NOS/NOAA  
Topography by photogrammetric methods from aerial photographs taken 1973. Field checked 1975. Map edited 1979  
Projection and 10,000-foot grid ticks: Idaho coordinate system, west zone (transverse Mercator)  
1000-meter Universal Transverse Mercator grid, zone 11 1927 North American datum  
To place on the predicted North American Datum 1983 move the projection lines 14 meters north and 75 meters east as shown by dashed corner ticks  
Fine red dashed lines indicate selected fence lines



ROAD CLASSIFICATION

Primary highway, hard surface	Light duty road, hard or improved surface
Secondary highway, hard surface	Unimproved road
Interstate Route	U. S. Route
	State Route

TRIGUERO LAKE, IDAHO  
N4207.5-W11537.5/7.5  
1979  
DMA 2868 II NW—SERIES V893

THIS MAP COMPLIES WITH NATIONAL MAP ACCURACY STANDARDS  
FOR SALE BY U. S. GEOLOGICAL SURVEY, DENVER, COLORADO 80225, OR RESTON, VIRGINIA 22092  
A FOLDER DESCRIBING TOPOGRAPHIC MAPS AND SYMBOLS IS AVAILABLE ON REQUEST

USGS AND HISTORICAL MAP  
JUN 13 1991  
READ FILE COPY