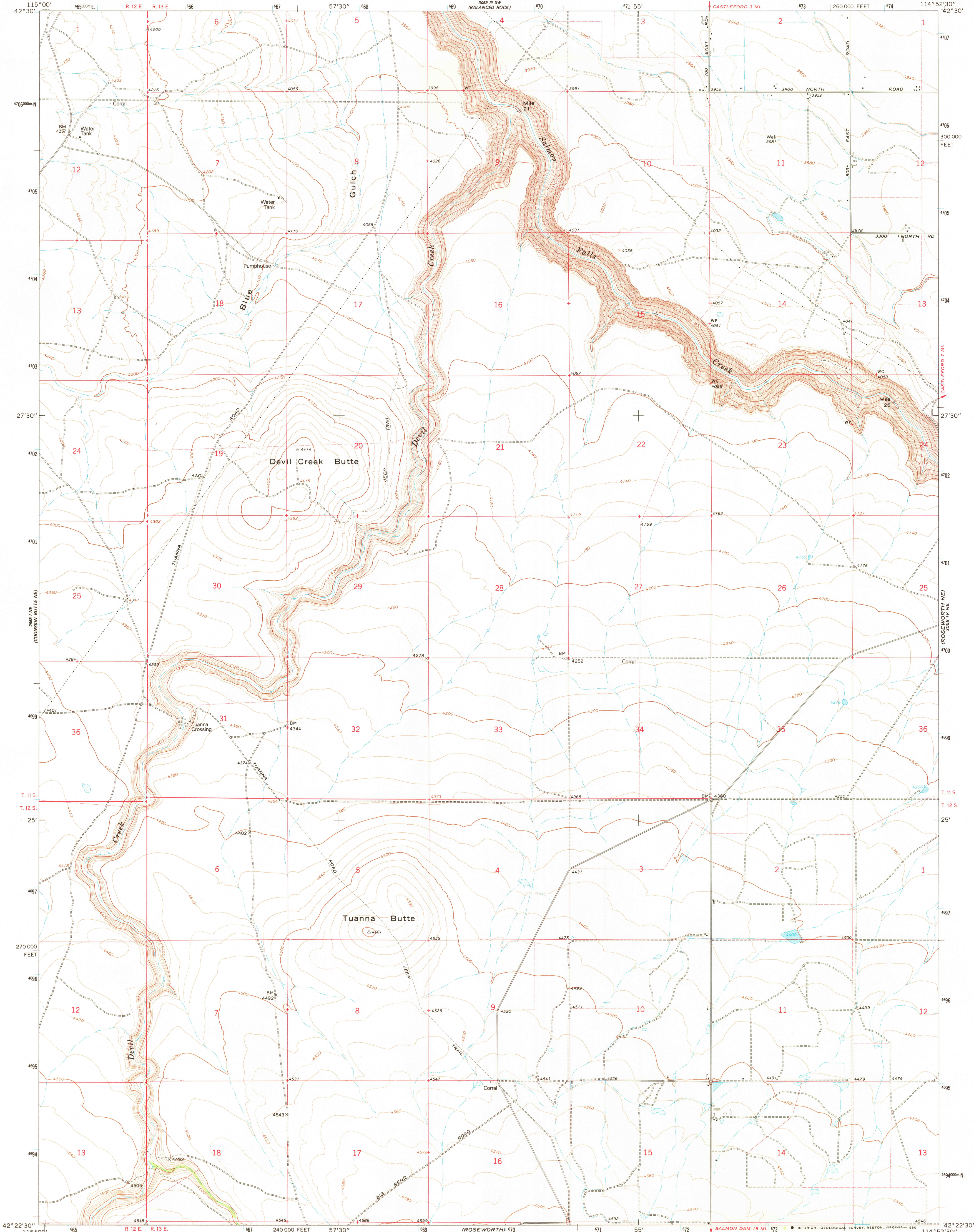


UNITED STATES
DEPARTMENT OF THE INTERIOR
GEOLOGICAL SURVEY



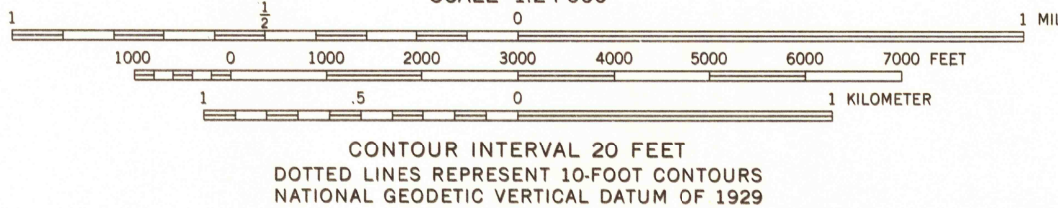
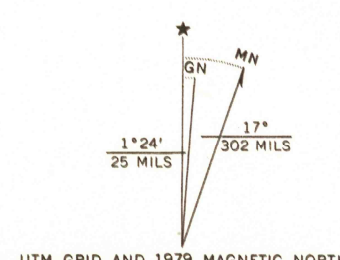
TUANNA BUTTE QUADRANGLE
IDAHO-TWIN FALLS CO.
7.5 MINUTE SERIES (TOPOGRAPHIC)

3068 III SE
(BUHL)



Mapped, edited, and published by the Geological Survey

Control by USGS and NOS/NOAA
Topography by photogrammetric methods from aerial
photographs taken 1961. Field checked 1965
Revised from aerial photographs taken 1976
Limited field checked 1979. Map edited 1979
Polyconic projection. 1927 North American Datum
10,000-foot grid based on Idaho coordinate system,
central zone
1000-meter Universal Transverse Mercator grid ticks,
zone 11, shown in blue
To place on the predicted North American Datum 1983
move the projection lines 14 meters north and
74 meters east as shown by dashed corner ticks
Fine red dashed lines indicate selected fence lines



THIS MAP COMPLIES WITH NATIONAL MAP ACCURACY STANDARDS
FOR SALE BY U. S. GEOLOGICAL SURVEY, DENVER, COLORADO 80225, OR RESTON, VIRGINIA 22092
A FOLDER DESCRIBING TOPOGRAPHIC MAPS AND SYMBOLS IS AVAILABLE ON REQUEST



ROAD CLASSIFICATION
Light-duty ————— Unimproved dirt - - - - -

TUANNA BUTTE, IDAHO
N4222.5-W11452.5/7.5

USGS
Historical File
Topographic Division
1979
DMA 3068 IV NW-SERIES V893

MAR 25 1980

1900