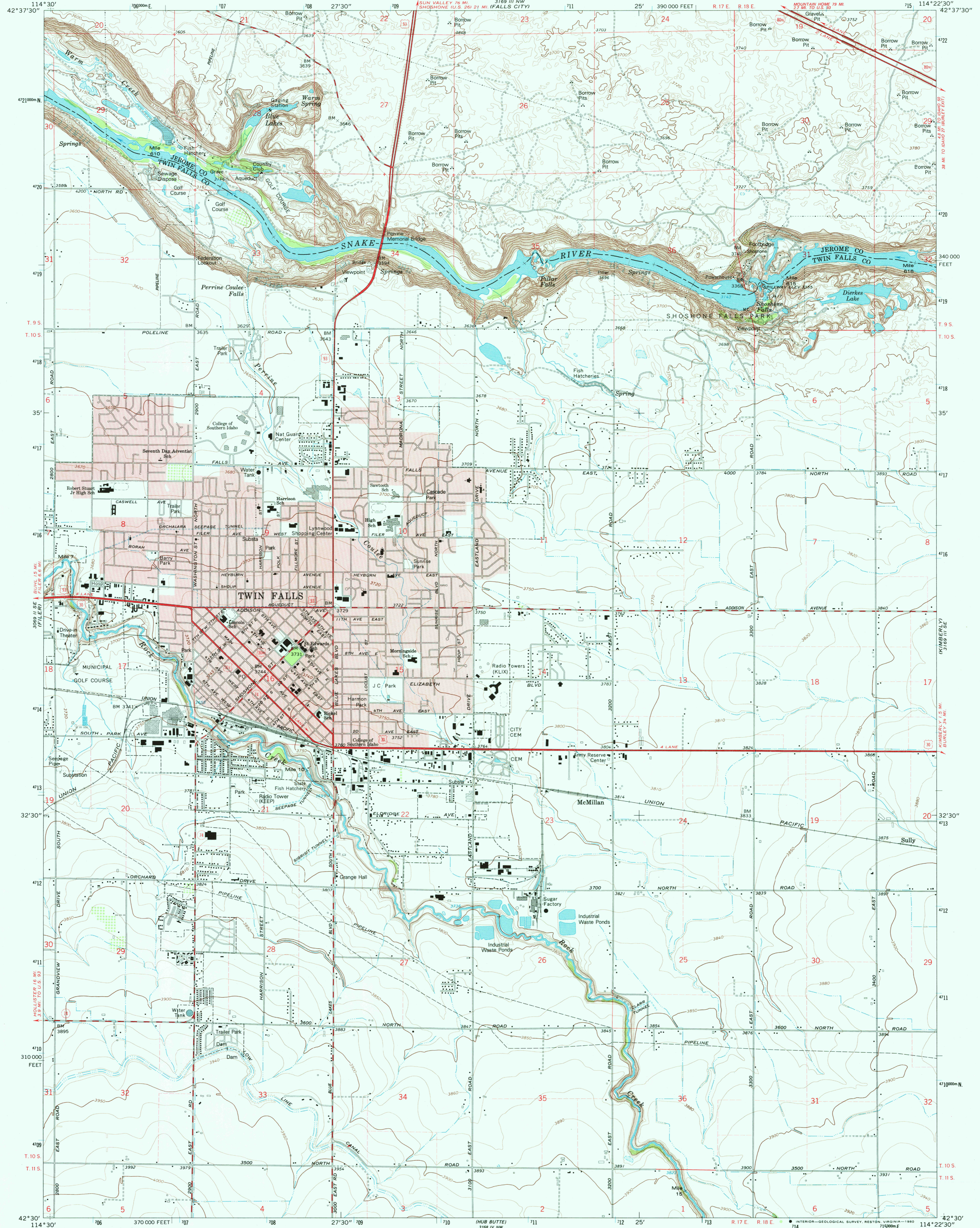


309 1/4 SE
JEROME

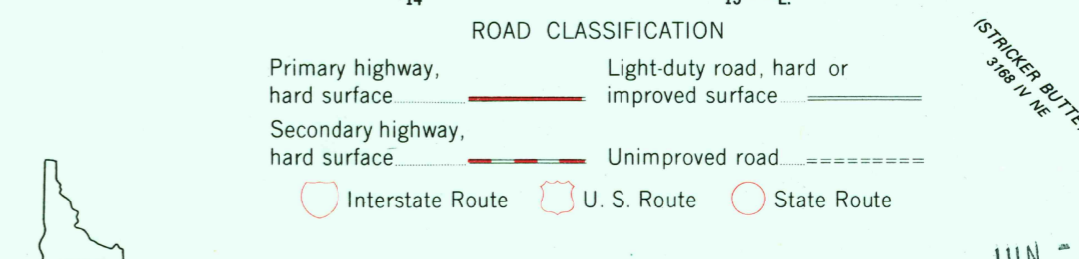
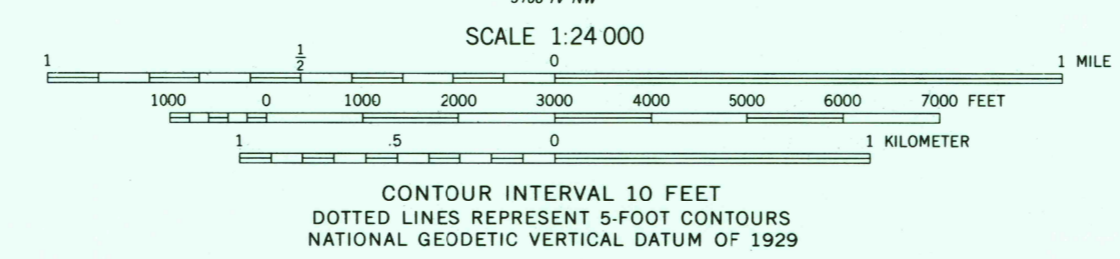
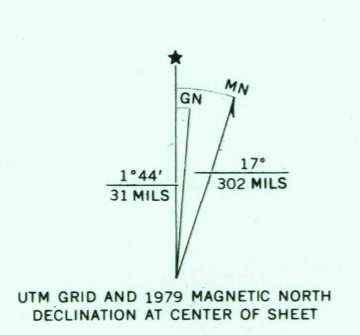
UNITED STATES
DEPARTMENT OF THE INTERIOR
GEOLOGICAL SURVEY

TWIN FALLS QUADRANGLE
IDAHO
7.5 MINUTE SERIES (TOPOGRAPHIC)

309 1/4 NE
TWIN FALLS



Mapped, edited, and published by the Geological Survey
Control by USGS and NOS/NOAA
Topography by photogrammetric methods from aerial photographs taken 1956, 1957, and 1962. Field checked 1964
Revised from aerial photographs taken 1976
Limited field check 1979. Map edited 1979
Polyconic projection. 1927 North American Datum
10,000-foot grid based on Idaho coordinate system, central zone
1000-meter Universal Transverse Mercator grid ticks, zone 11, shown in blue
To place on the predicted North American Datum 1983
move the projection lines 13 meters north and
72 meters east as shown by dashed corner ticks
Red tint indicates area in which only landmark buildings are shown
Fine red dashed lines indicate selected fence lines



THIS MAP COMPLIES WITH NATIONAL MAP ACCURACY STANDARDS
FOR SALE BY U. S. GEOLOGICAL SURVEY, DENVER, COLORADO 80225, OR RESTON, VIRGINIA 22092
A FOLDER DESCRIBING TOPOGRAPHIC MAPS AND SYMBOLS IS AVAILABLE ON REQUEST

USGS
Historical File
Topographic Division

TWIN FALLS, IDAHO
N4230-W11422.5/7.5
1979
DMA 3169 III SW-SERIES 7883

JUN - 5 1980
2000