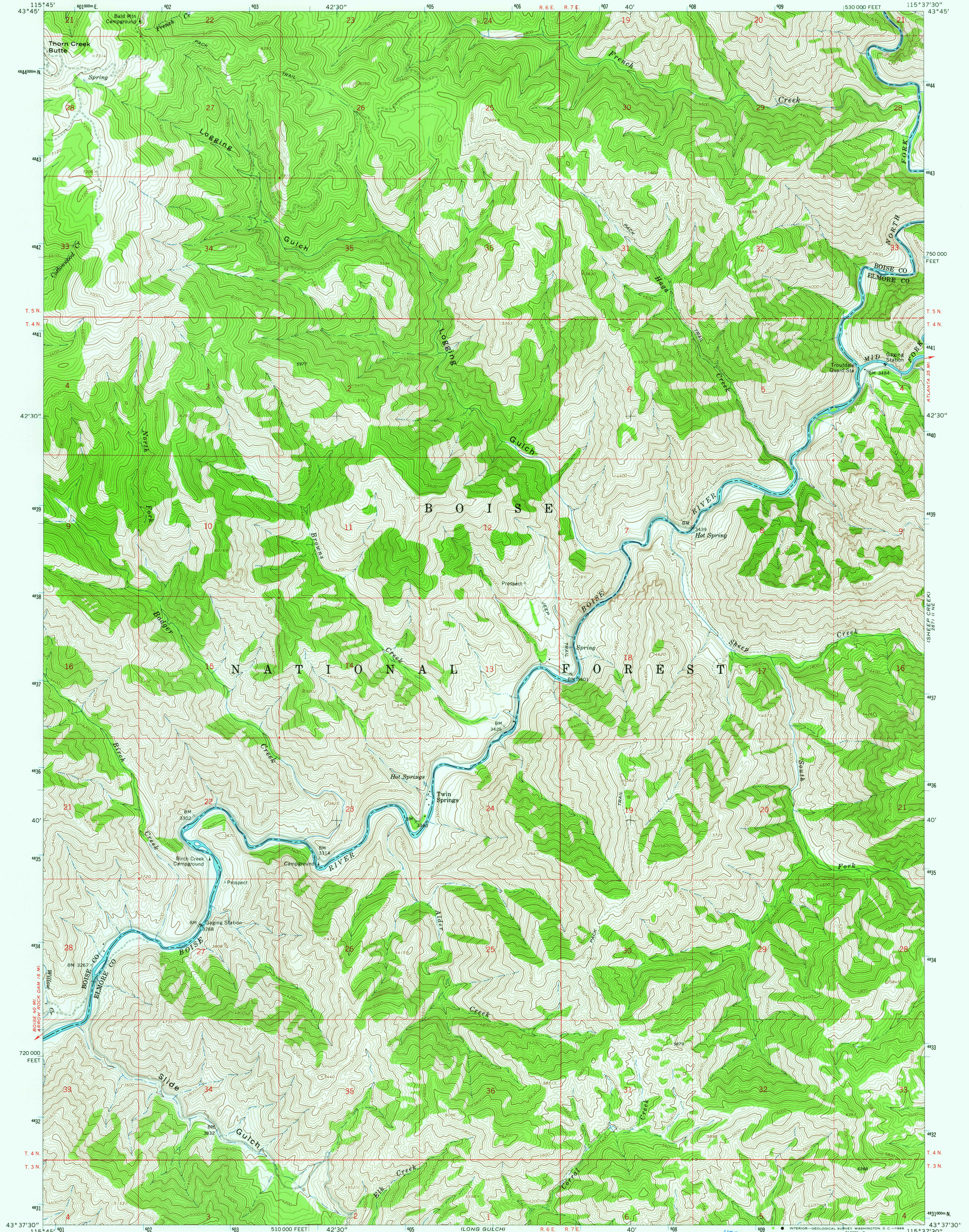
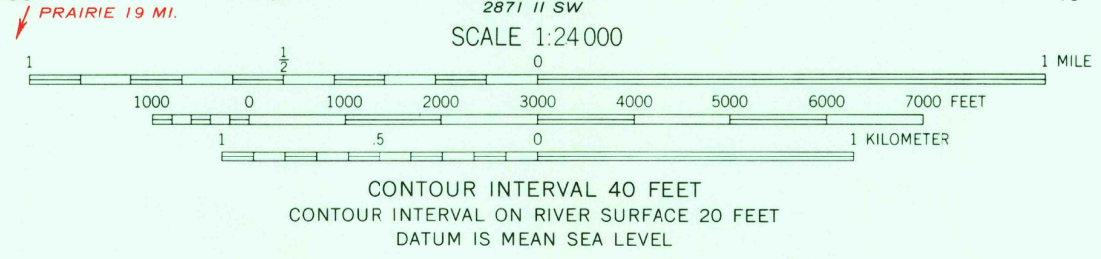
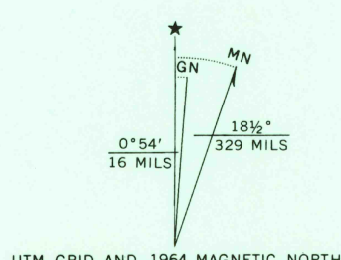


AMS 2871 II NW
ID 340 070



Mapped, edited, and published by the Geological Survey
Control by USGS and USC&GS
Topography by photogrammetric methods from aerial photographs taken 1959. Field checked 1964
Polyconic projection. 1927 North American datum
10,000-foot grid based on Idaho coordinate system, west zone
1000-meter Universal Transverse Mercator grid ticks, zone 11, shown in blue



USGS
Historical File
Topographic Division

ROAD CLASSIFICATION
Light-duty ————— Unimproved dirt - - - - -



HISTORICAL
U.S.G.S.

TWIN SPRINGS, IDAHO
N4337.5—W11537.5/7.5
1964

FILE COPY
TOPOGRAPHIC DIVISION

AMS 2871 II NW—SERIES V893

THIS MAP COMPLIES WITH NATIONAL MAP ACCURACY STANDARDS
FOR SALE BY U.S. GEOLOGICAL SURVEY, DENVER, COLORADO 80225, OR WASHINGTON, D.C. 20242
A FOLDER DESCRIBING TOPOGRAPHIC MAPS AND SYMBOLS IS AVAILABLE ON REQUEST

2700
MAR 18 1966
HISTORICAL