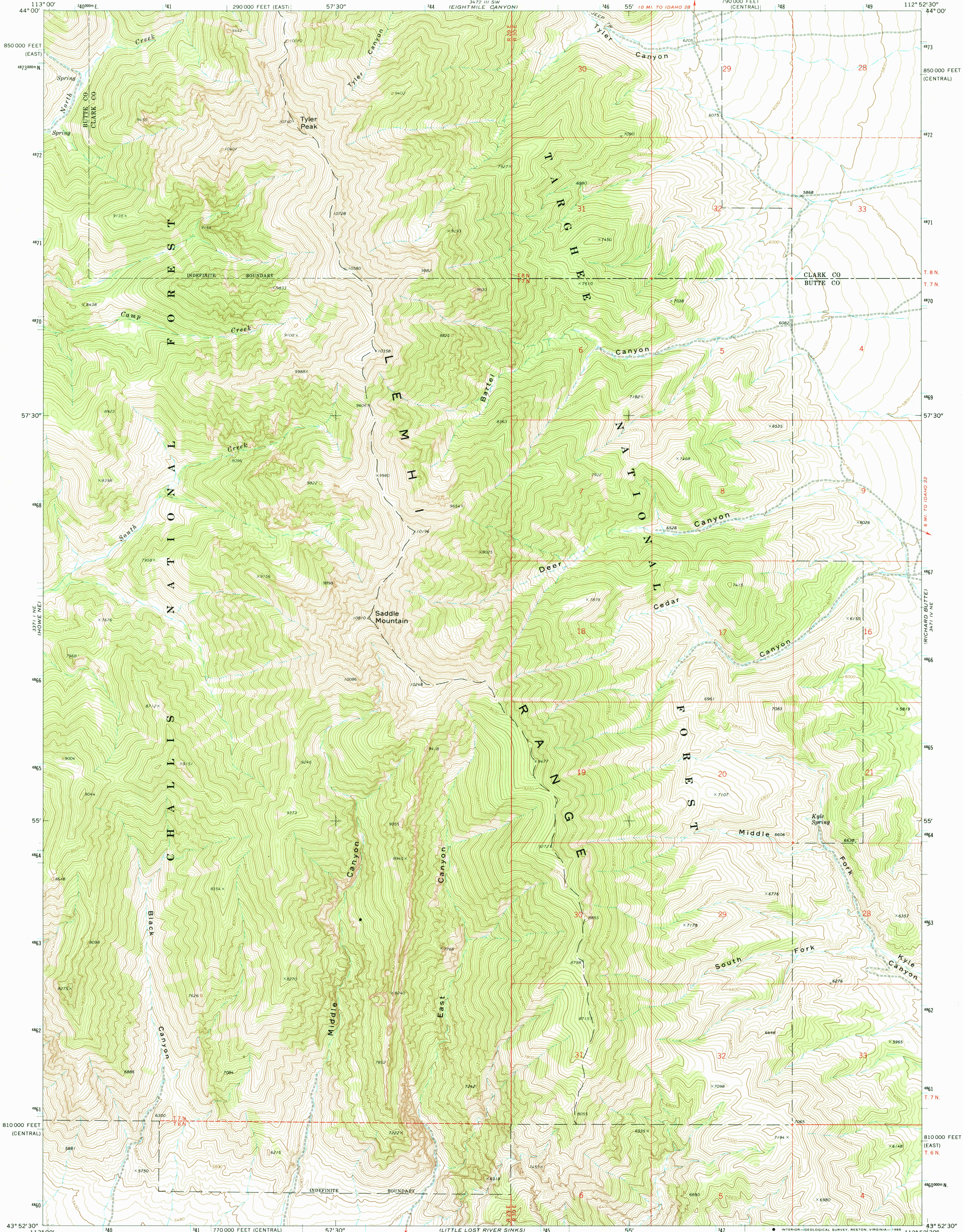


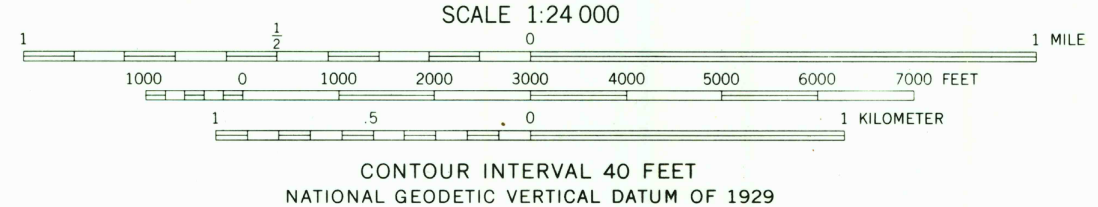
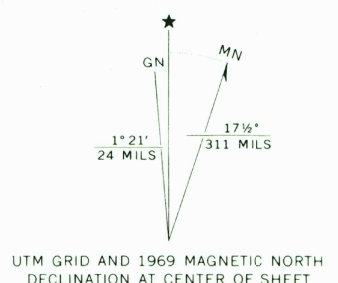
UNITED STATES
DEPARTMENT OF THE INTERIOR
GEOLOGICAL SURVEY

TYLER PEAK QUADRANGLE
IDAHO
7.5 MINUTE SERIES (TOPOGRAPHIC)



Mapped, edited, and published by the Geological Survey

Control by USGS and USC&GS
Topography by photogrammetric methods from aerial photographs taken 1967. Field checked 1969
Polyconic projection. 1927 North American datum
10,000-foot grids based on Idaho coordinate system, central and east zones
1000-meter Universal Transverse Mercator grid ticks, zone 12, shown in blue
To place on the predicted North American Datum 1983 move the projection lines 12 meters north and 68 meters east as shown by dashed corner ticks
Where omitted land lines have not been established
There may be private inholdings within the boundaries of the National or State reservations shown on this map



ROAD CLASSIFICATION

Primary highway, hard surface	Light-duty road, hard or improved surface
Secondary highway, hard surface	Unimproved road
Interstate Route	U. S. Route
	State Route



TYLER PEAK, IDAHO
43112-H8-TF-024

THIS MAP COMPLIES WITH NATIONAL MAP ACCURACY STANDARDS
FOR SALE BY U. S. GEOLOGICAL SURVEY, DENVER, COLORADO 80225, OR RESTON, VIRGINIA 22092
A FOLDER DESCRIBING TOPOGRAPHIC MAPS AND SYMBOLS IS AVAILABLE ON REQUEST

Map photoinspected 1974
No major culture or drainage changes observed

1969
PHOTOINSPECTED 1974
DMA 3471 IV NW - SERIES V893

USGS MHD HISTORICAL MAP
JAN 29 1986
REC'D FILE COPY