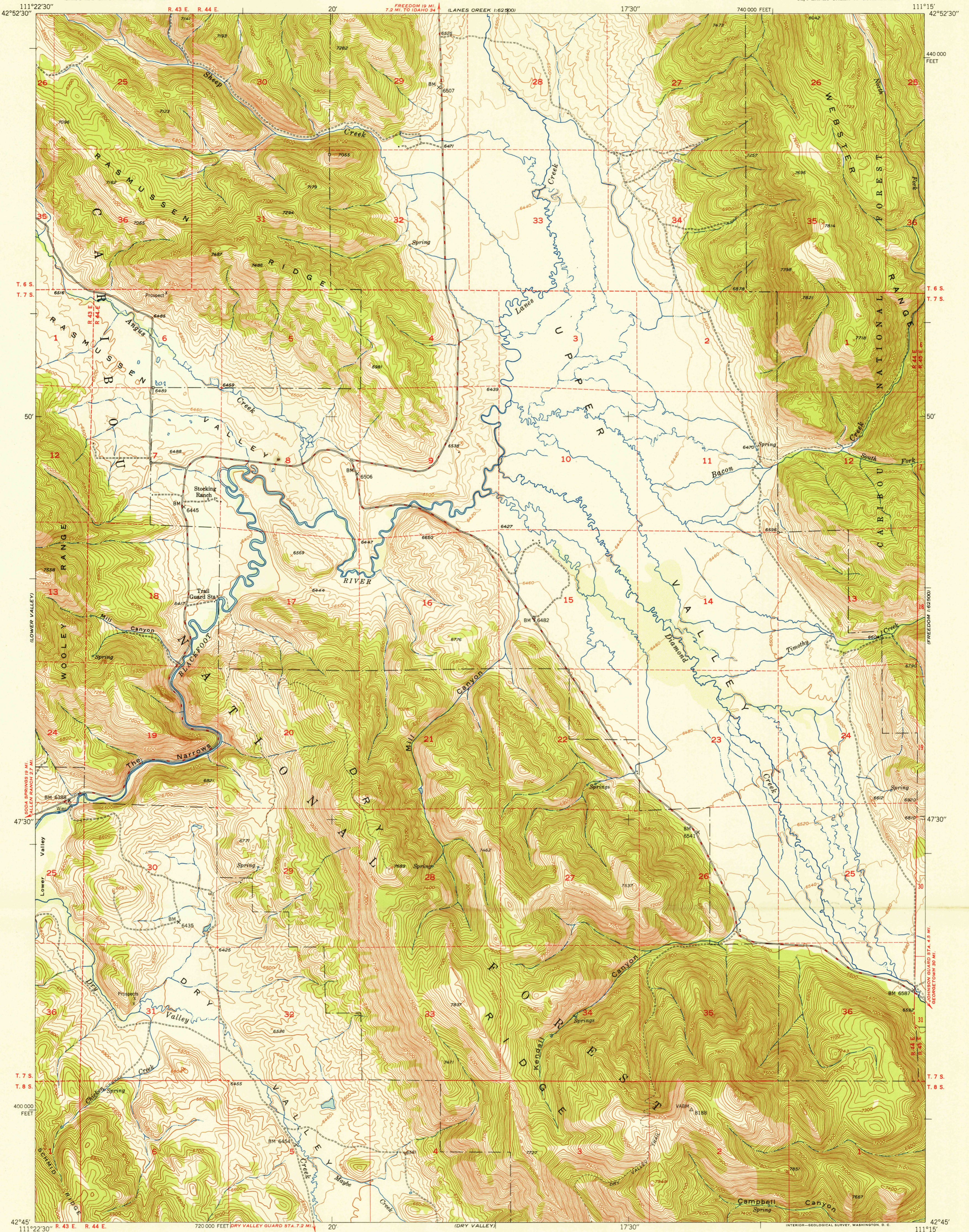
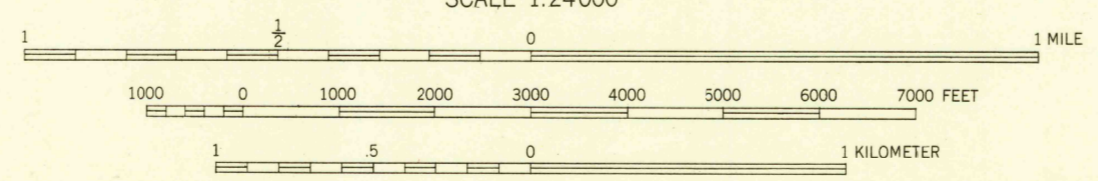
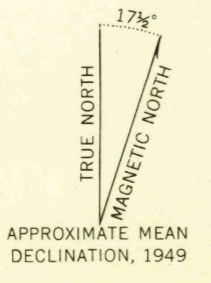


U. S. G. S.  
FILE COPY  
Inspection and Printing.



Mapped, edited, and published by the Geological Survey  
Control by USGS  
Topography from aerial photographs by multiplex methods  
and by plane-table surveys 1949  
Aerial photographs taken 1947  
Polyconic projection. 1927 North American datum  
10,000-foot grid based on Idaho coordinate system,  
east zone  
Unchecked elevations are shown in brown  
Dashed land lines indicate approximate location



CONTOUR INTERVAL 20 FEET  
DATUM IS MEAN SEA LEVEL

USGS  
Historical File  
Topographic Division

ROAD CLASSIFICATION

HARD-SURFACE ALL WEATHER ROADS	DRY WEATHER ROADS
Heavy-duty — 4 LANE ROAD	Improved dirt
Medium-duty — 4 LANE ROAD	Unimproved dirt
Loose-surface, graded, or narrow hard-surface	

U. S. Route (square symbol) State Route (circle symbol)

U. S. G. S.  
FILE COPY  
Inspection and Printing.

UPPER VALLEY, IDAHO  
SE/4 LANES CREEK 15 QUADRANGLE  
N4245-W11115/75  
EDITION OF 1951

THIS MAP COMPLIES WITH NATIONAL MAP ACCURACY STANDARDS  
FOR SALE BY U. S. GEOLOGICAL SURVEY, FEDERAL CENTER, DENVER, COLORADO OR WASHINGTON 25, D. C.  
A FOLDER DESCRIBING TOPOGRAPHIC MAPS AND SYMBOLS IS AVAILABLE ON REQUEST