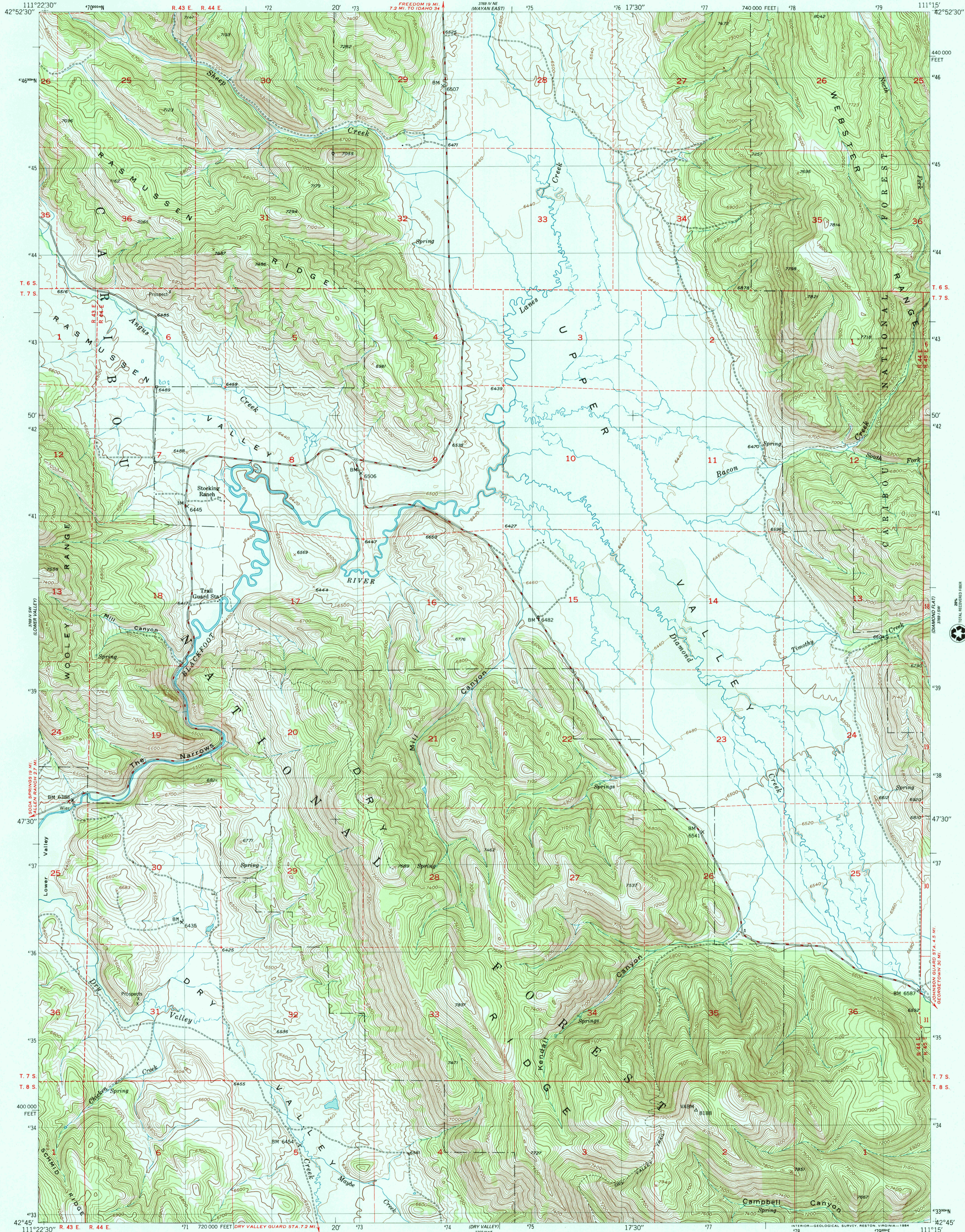




U.S. DEPARTMENT OF THE INTERIOR
U.S. GEOLOGICAL SURVEY

UPPER VALLEY QUADRANGLE
IDAHO—CARIBOU CO.
7.5 MINUTE SERIES (TOPOGRAPHIC)
8E4 LANES CREEK 15' QUADRANGLE



Mapped, edited, and published by the Geological Survey

Control by USGS

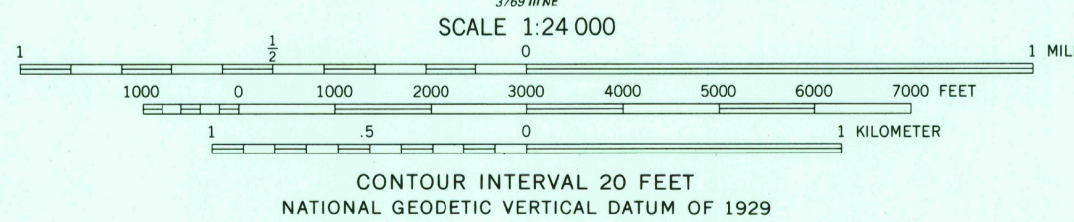
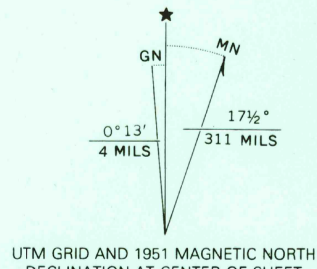
Topography from aerial photographs by multiplex methods
and by plane-table surveys 1949
Aerial photographs taken 1947

Polyconic projection. 1927 North American datum
10,000-foot grid based on Idaho coordinate system,
east zone

To place on the predicted North American Datum 1983
move the projection lines 12 meters north and
64 meters east as shown by dashed corner ticks

Unchecked elevations are shown in brown

There may be private inholdings within the boundaries of
the National or State reservations shown on this map



ROAD CLASSIFICATION

- HARD-SURFACE ALL WEATHER ROADS
- Heavy-duty **4 LANE 6 LANE** Improved dirt
- Medium-duty **4 LANE 6 LANE** Unimproved dirt
- Loose-surface, graded, or narrow hard-surface
- U. S. Route
- State Route
- DRY WEATHER ROADS

UPPER VALLEY, IDAHO
8E4 LANES CREEK 15' QUADRANGLE
N4245—W11115/7.5

1951
DMA 5769 IV SE-SERIES V893

RECEIVED
DEC 31 1999
USGS NWID
HISTORICAL MAP ARCHIVES

