

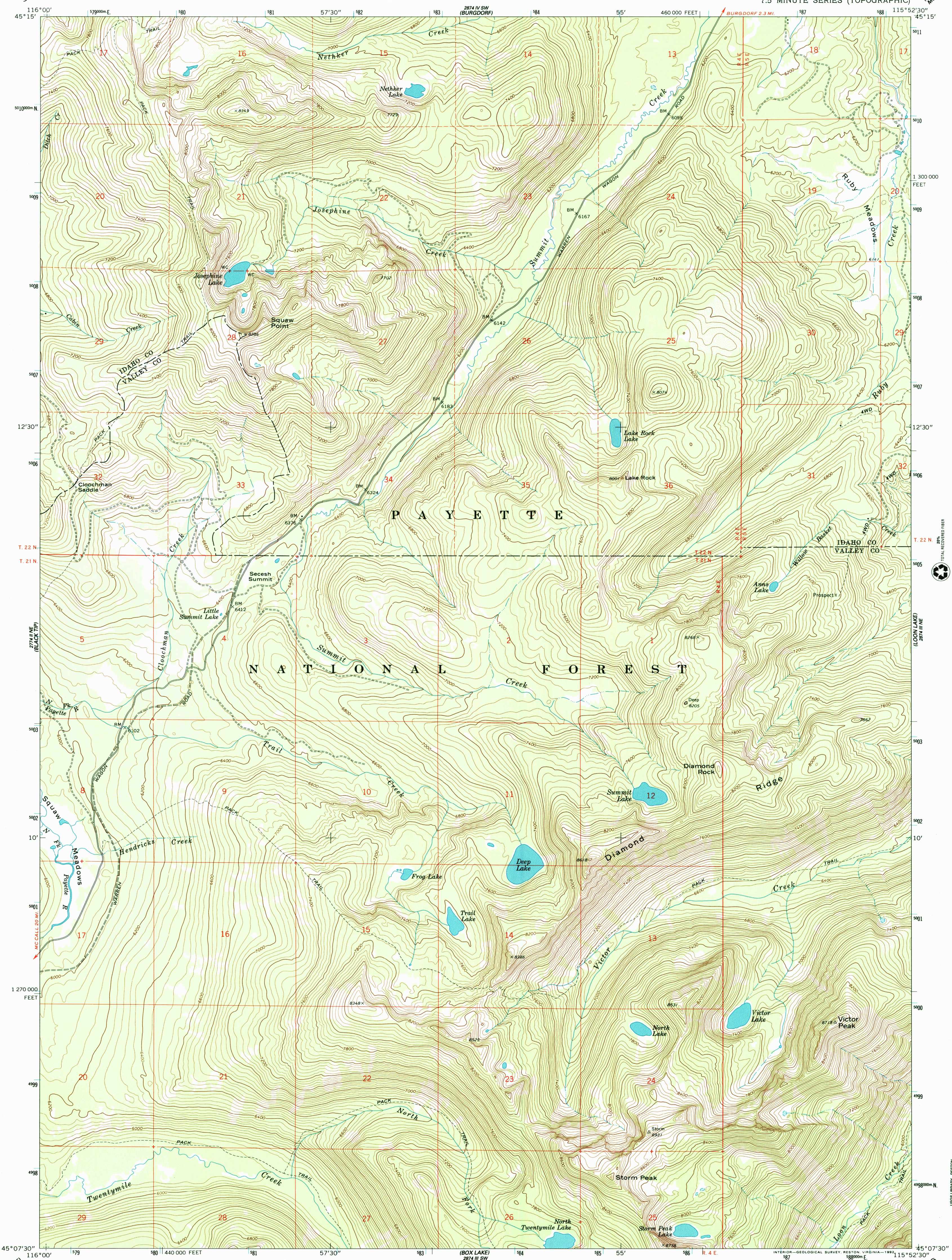
GRANITE POINT
2714 E



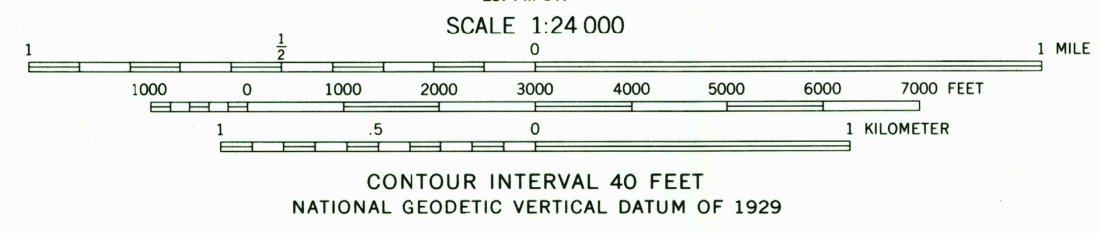
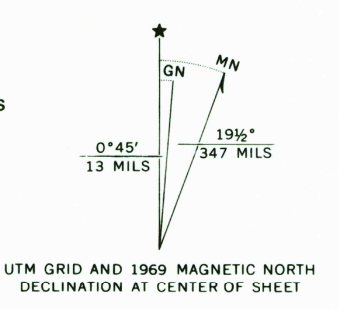
U.S. DEPARTMENT OF THE INTERIOR
U.S. GEOLOGICAL SURVEY

VICTOR PEAK QUADRANGLE
IDAHO
7.5 MINUTE SERIES (TOPOGRAPHIC)

2714 E
2714 SW (BURGDORF)



Mapped by the U.S. Forest Service
Edited and published by the Geological Survey
Control by USGS, NOS/NOAA, and USFS
Topography by photogrammetric methods from aerial photographs taken 1964. Field checked by USGS 1969
Polyconic projection. 1927 North American Datum
10,000-foot grid based on Idaho coordinate system,
west zone
1000-meter Universal Transverse Mercator grid ticks, zone 11,
shown in blue
The difference between 1927 North American Datum and North
American Datum of 1983 (NAD 83) for 7.5 minute intersections is
given in USGS Bulletin 1875. The NAD 83 is shown by dashed
corner ticks
Where omitted, land lines have not been established



ROAD CLASSIFICATION
Light-duty road, all weather, Unimproved road, fair or dry
improved surface weather



THIS MAP COMPLIES WITH NATIONAL MAP ACCURACY STANDARDS
FOR SALE BY U.S. GEOLOGICAL SURVEY, P.O. BOX 25286, DENVER, COLORADO 80225
A FOLDER DESCRIBING TOPOGRAPHIC MAPS AND SYMBOLS IS AVAILABLE ON REQUEST

Map photocopied 1979
No major culture or drainage changes observed

JUN 09 2005
VICTOR PEAK, IDAHO
45115-B8-TF-024
1969
PHOTOINSPECTED 1979
DMA 2874 III NW-SERIES V893



USGS Library
Reston, VA.
Topo Archive

