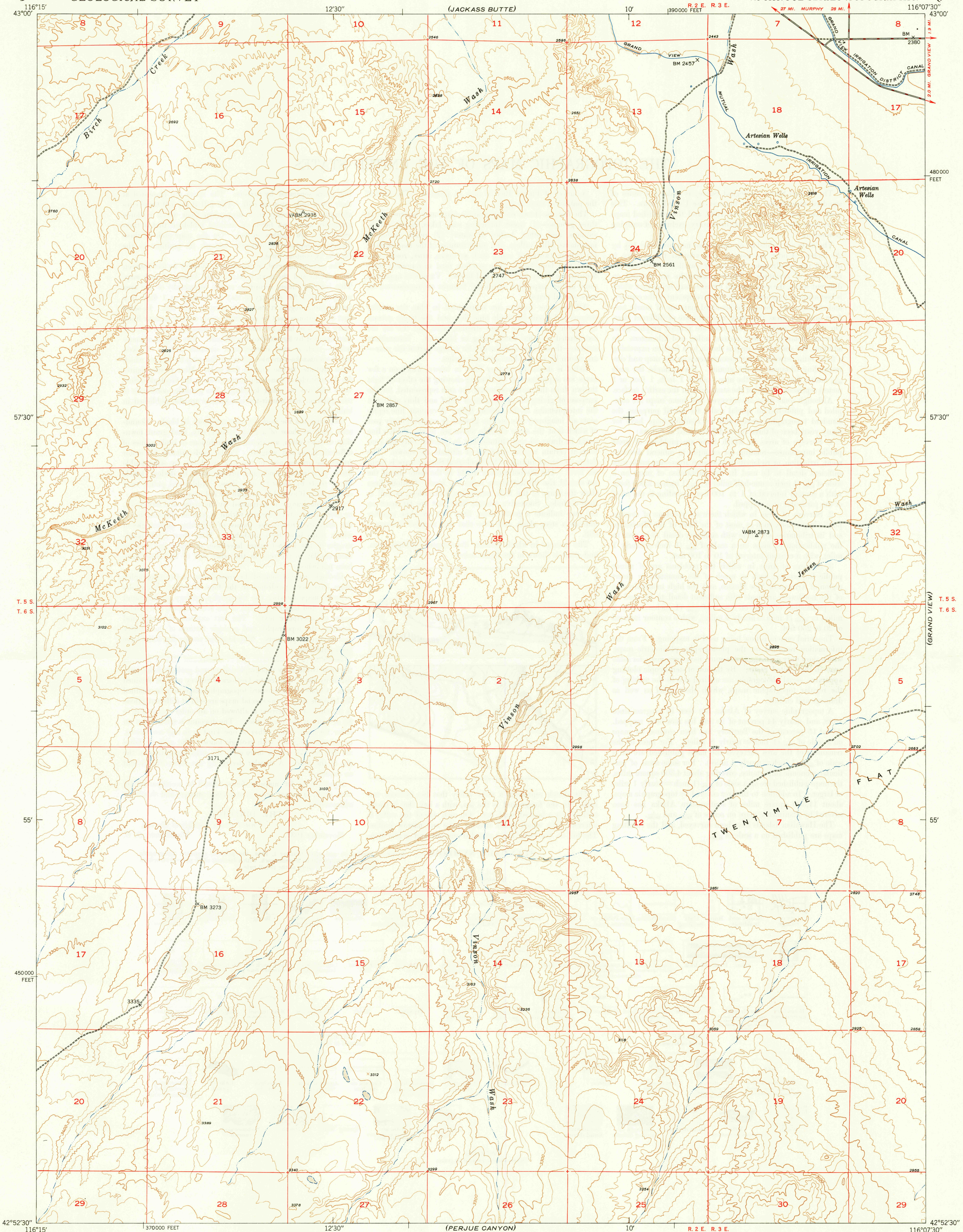


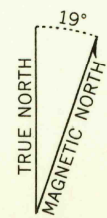
UNITED STATES  
DEPARTMENT OF THE INTERIOR  
GEOLOGICAL SURVEY

U. S. G. S.  
FILE COPY  
Inspection and Editing.

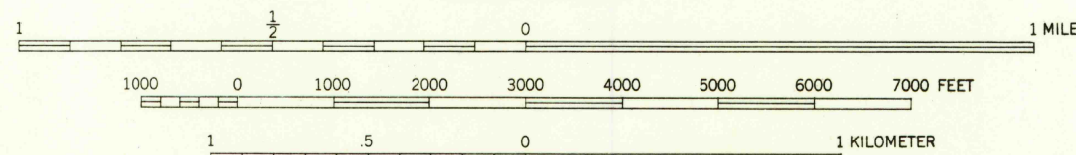
VINSON WASH QUADRANGLE  
IDAHO-OWYHEE CO.  
7.5 MINUTE SERIES (TOPOGRAPHIC)



Mapped, edited, and published by the Geological Survey  
Control by USGS and USC & GS  
Culture and drainage in part compiled from  
aerial photographs taken 1946  
Topography by plane-table methods 1946-1947  
Polyconic projection. 1927 North American datum  
10000 foot grid based on Idaho coordinate system,  
west zone



APPROXIMATE MEAN  
DECLINATION, 1947



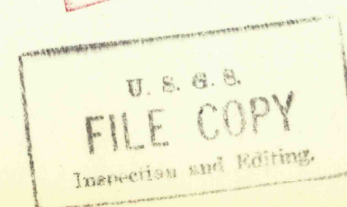
CONTOUR INTERVAL 25 FEET  
DATUM IS MEAN SEA LEVEL

THIS MAP COMPLIES WITH NATIONAL MAP ACCURACY STANDARDS

FOR SALE BY U. S. GEOLOGICAL SURVEY, WASHINGTON 25, D. C.

USGS  
Historical File  
Topographic Division

HISTORICAL



ROAD CLASSIFICATION  
HARD-SURFACE ALL WEATHER ROADS DRY WEATHER ROADS  
Heavy-duty **4 LANE 18 LANE** Improved dirt  
Medium-duty **4 LANE 18 LANE** Unimproved dirt  
Loose-surface or narrow hard-surface **1** U. S. Route **1** State Route

VINSON WASH, IDAHO  
N4252.5-W11607.5/7.5

PRINTED 1948

OCT 7 1948 2105