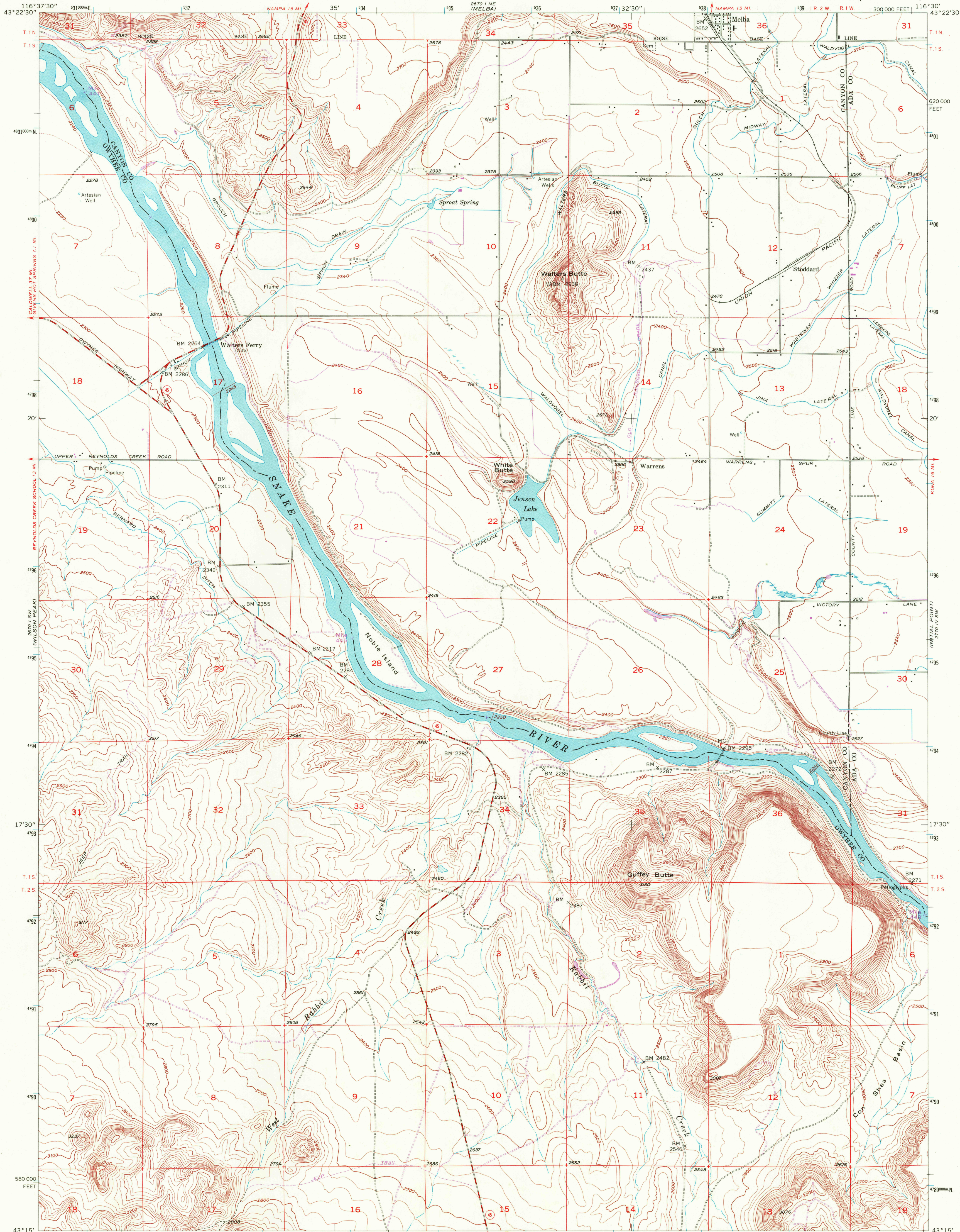


UNITED STATES
DEPARTMENT OF THE INTERIOR
GEOLOGICAL SURVEY

WALTERS BUTTE QUADRANGLE
IDAHO
7.5 MINUTE SERIES (TOPOGRAPHIC)



Mapped, edited, and published by the Geological Survey
Control by USGS and USC&GS

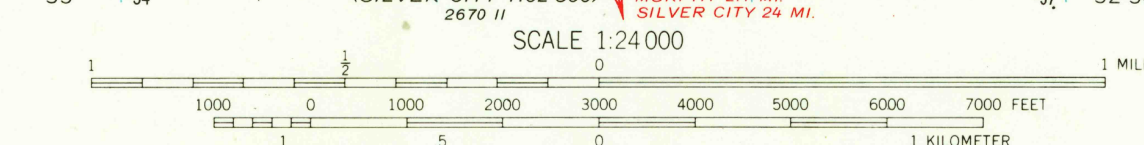
Topography from aerial photographs by ER-55 plotter
and by planetable surveys 1957. Aerial photographs taken 1955

Polyconic projection. 1927 North American datum
10,000-foot grid based on Idaho coordinate system, west zone
1000-meter Universal Transverse Mercator grid ticks,
zone 11, shown in blue

Islands in Snake River are part of the Snake River National
Wildlife Refuge except Noble Island which is privately owned

Revisions shown in purple compiled from aerial photographs
taken 1971. This information not field checked

UTM GRID AND 1971 MAGNETIC NORTH
DECLINATION AT CENTER OF SHEET



CONTOUR INTERVAL 20 FEET
DOTTED LINES REPRESENT 10-FOOT CONTOURS
CONTOUR INTERVAL ON RIVER SURFACE 5 FEET
DATUM IS MEAN SEA LEVEL

THIS MAP COMPLIES WITH NATIONAL MAP ACCURACY STANDARDS
FOR SALE BY U.S. GEOLOGICAL SURVEY, DENVER, COLORADO 80225, OR WASHINGTON, D.C. 20242
A FOLDER DESCRIBING TOPOGRAPHIC MAPS AND SYMBOLS IS AVAILABLE ON REQUEST



ROAD CLASSIFICATION
Medium-duty ——— Light-duty ———
Unimproved dirt ———
State Route —○—

WALTERS BUTTE, IDAHO
N4315—W11630/7.5

1957
PHOTOREVISED 1971
AMS 2670 I SE—SERIES V893

USGS
HISTORICAL FILE
TOPOGRAPHIC DIVISION

001 157

2555