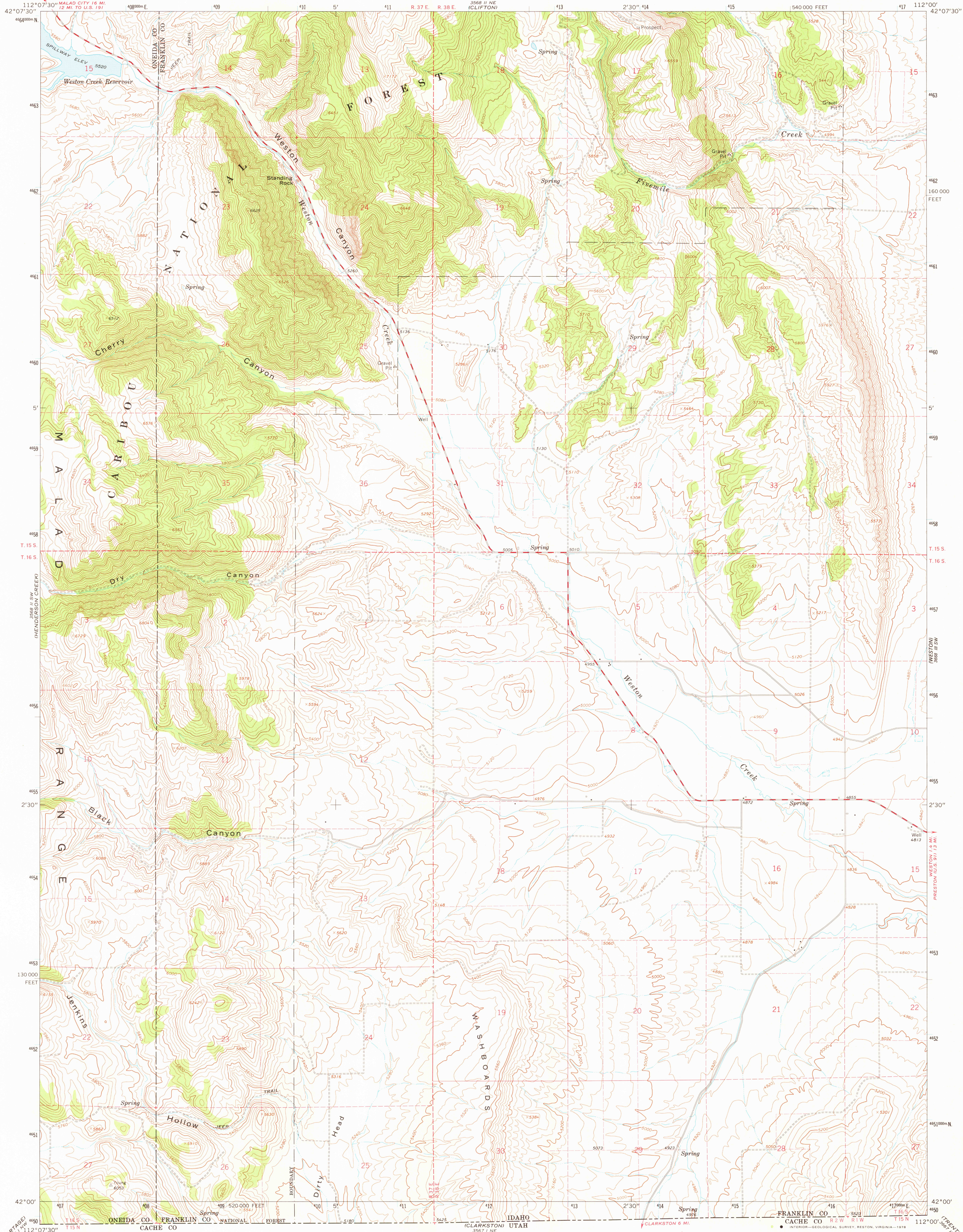
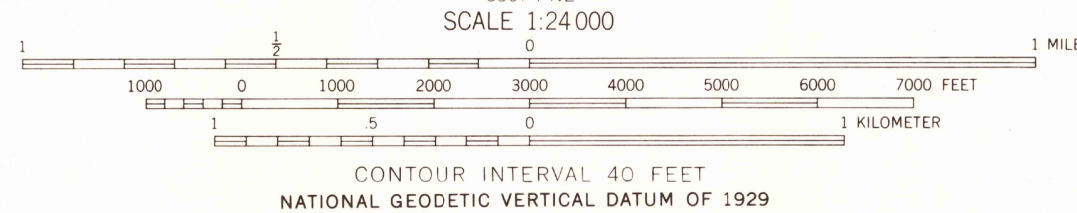
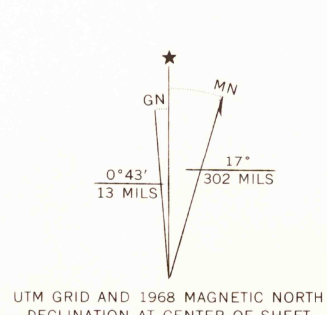


UNITED STATES
DEPARTMENT OF THE INTERIOR
GEOLOGICAL SURVEY

WESTON CANYON QUADRANGLE
IDAHO
7.5 MINUTE SERIES (TOPOGRAPHIC)



Mapped, edited, and published by the Geological Survey
Control by USGS and USC&GS
Topography by photogrammetric methods from aerial
photographs taken 1966. Field checked 1968
Polyconic projection. 1927 North American datum
10,000-foot grid based on Idaho coordinate system,
east zone
1000-meter Universal Transverse Mercator grid ticks,
zone 12, shown in blue
Fine red dashed lines indicate selected fence lines



ROAD CLASSIFICATION
Secondary highway, all weather, Light-duty road, all weather,
hard surface improved surface
Unimproved road, fair or dry
weather

JUL 26 1978

THIS MAP COMPLIES WITH NATIONAL MAP ACCURACY STANDARDS
FOR SALE BY U.S. GEOLOGICAL SURVEY, DENVER, COLORADO 80225, OR RESTON, VIRGINIA 22092
A FOLDER DESCRIBING TOPOGRAPHIC MAPS AND SYMBOLS IS AVAILABLE ON REQUEST



USGS
Historical File
Topographic Division

WESTON CANYON, IDAHO
N4200-W11200/7.5
1968

AMS 3568 II SE-SERIES V893