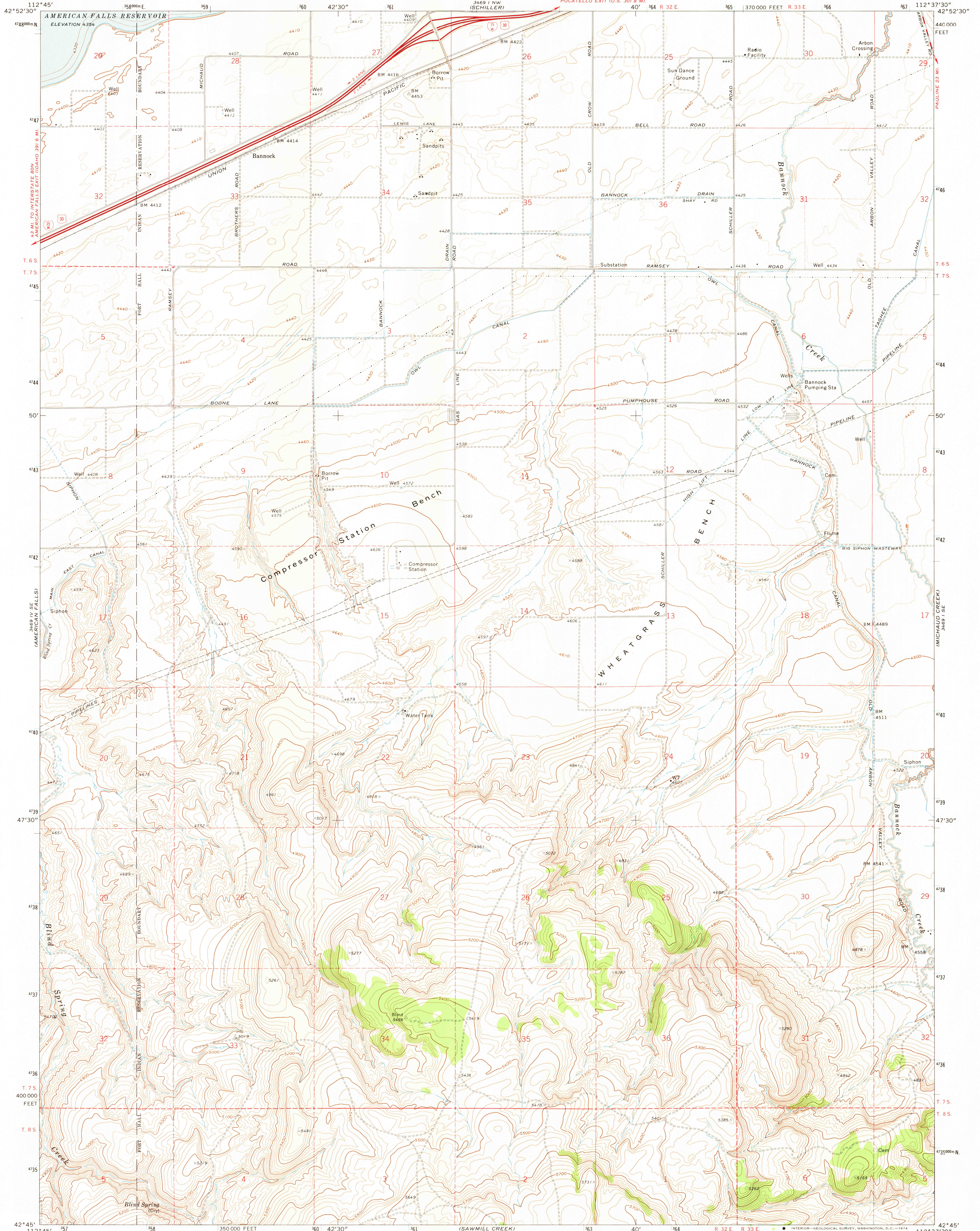


UNITED STATES
DEPARTMENT OF THE INTERIOR
GEOLOGICAL SURVEY

WHEATGRASS BENCH QUADRANGLE
IDAHO-POWER CO.
7.5 MINUTE SERIES (TOPOGRAPHIC)

SW 1/4 MICHAUD 15' QUADRANGLE



Mapped, edited, and published by the Geological Survey

Control by USGS and USC&GS

Topography by photogrammetric methods from aerial

photographs taken 1969. Field checked 1971

Underwater contours by U. S. Bureau of Reclamation

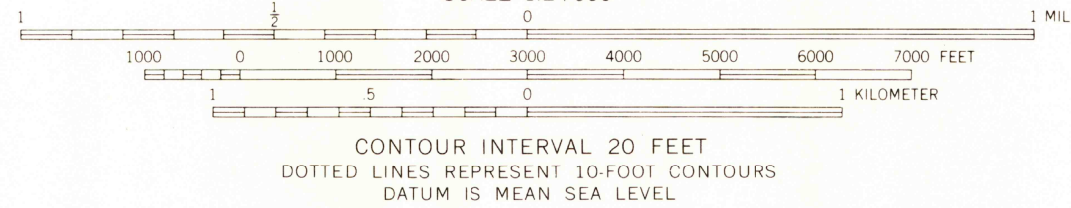
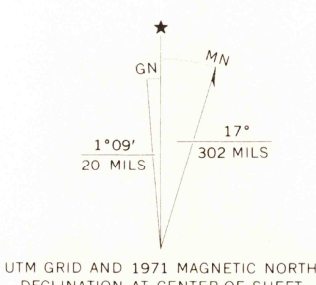
Projection and 10,000-foot grid ticks: Idaho coordinate

system, east zone (transverse Mercator)

1000-meter Universal Transverse Mercator grid ticks,

zone 12, shown in blue. 1927 North American datum

Fine red dashed lines indicate selected fence lines



ROAD CLASSIFICATION

Primary highway, hard surface

Secondary highway, hard surface

Light-duty road, hard or improved surface

Unimproved road

Interstate Route

U. S. Route

State Route

Aug 27 1974

WHEATGRASS BENCH, IDAHO

SW 1/4 MICHAUD 15' QUADRANGLE

N4245-W11237.5/7.5

1971

AMS 3469 I SW-SERIES V893

THIS MAP COMPLIES WITH NATIONAL MAP ACCURACY STANDARDS
FOR SALE BY U. S. GEOLOGICAL SURVEY, DENVER, COLORADO 80225, OR WASHINGTON, D. C. 20242
A FOLDER DESCRIBING TOPOGRAPHIC MAPS AND SYMBOLS IS AVAILABLE ON REQUEST



Topographic Division

2356