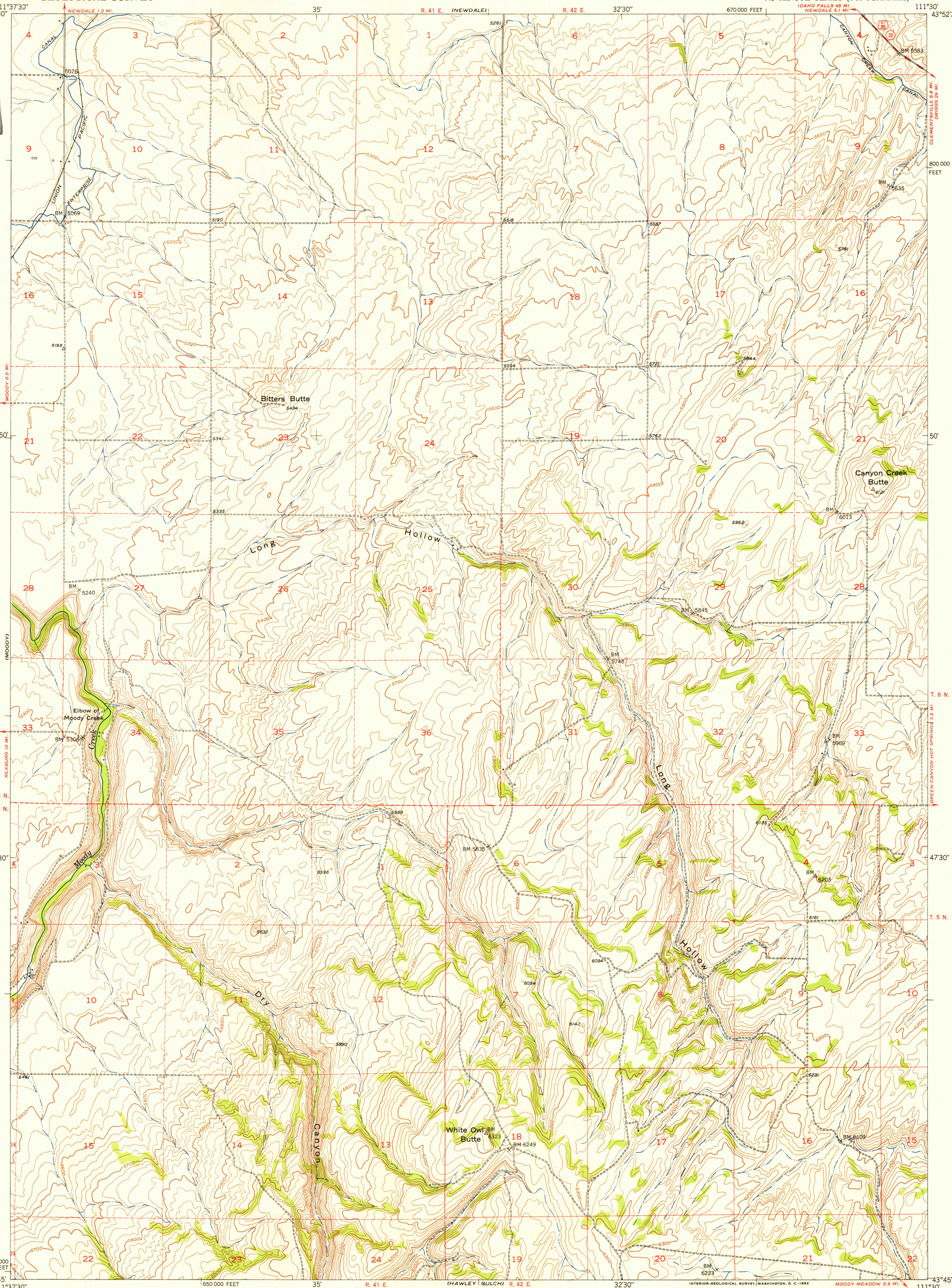
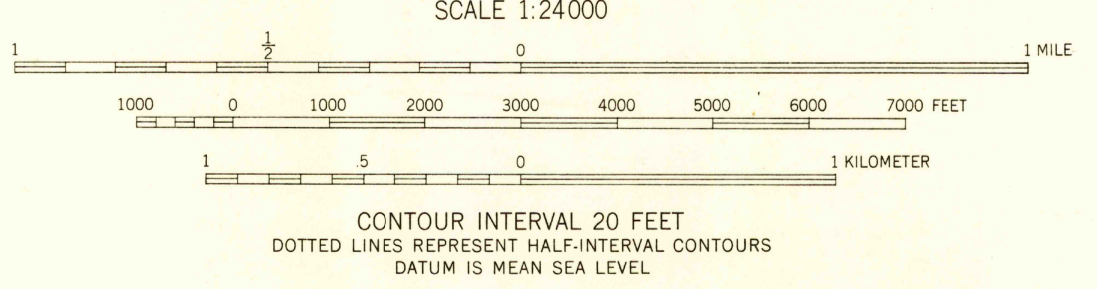
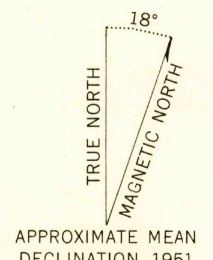


U.S.G.S.
FILE COPY
Inspection and Mapping



Mapped, edited, and published by the Geological Survey
Control by USGS and USC&GS
Topography from aerial photographs by multiplex methods
Aerial photographs taken 1946. Field check 1951
Polyconic projection. 1927 North American Datum
10,000-foot grid based on Idaho coordinate system, east zone
Dashed land lines indicate approximate locations



CONTOUR INTERVAL 20 FEET
DOTTED LINES REPRESENT HALF-INTERVAL CONTOURS
DATUM IS MEAN SEA LEVEL

ROAD CLASSIFICATION

Heavy-duty	4 LANE 6 LANE	Light-duty
Medium-duty	4 LANE 6 LANE	Unimproved dirt

U.S. Route (circle with number)
State Route (circle with number)

U.S.G.S.
FILE COPY
Inspection and Mapping

WHITE OWL BUTTE, IDAHO
N4345-W11130/7.5
1951

THIS MAP COMPLIES WITH NATIONAL MAP ACCURACY STANDARDS
FOR SALE BY U.S. GEOLOGICAL SURVEY, FEDERAL CENTER, DENVER, COLORADO OR WASHINGTON 25, D. C.
A FOLDER DESCRIBING TOPOGRAPHIC MAPS AND SYMBOLS IS AVAILABLE ON REQUEST

HISTORICAL HISTORICAL
NOV 26 1952