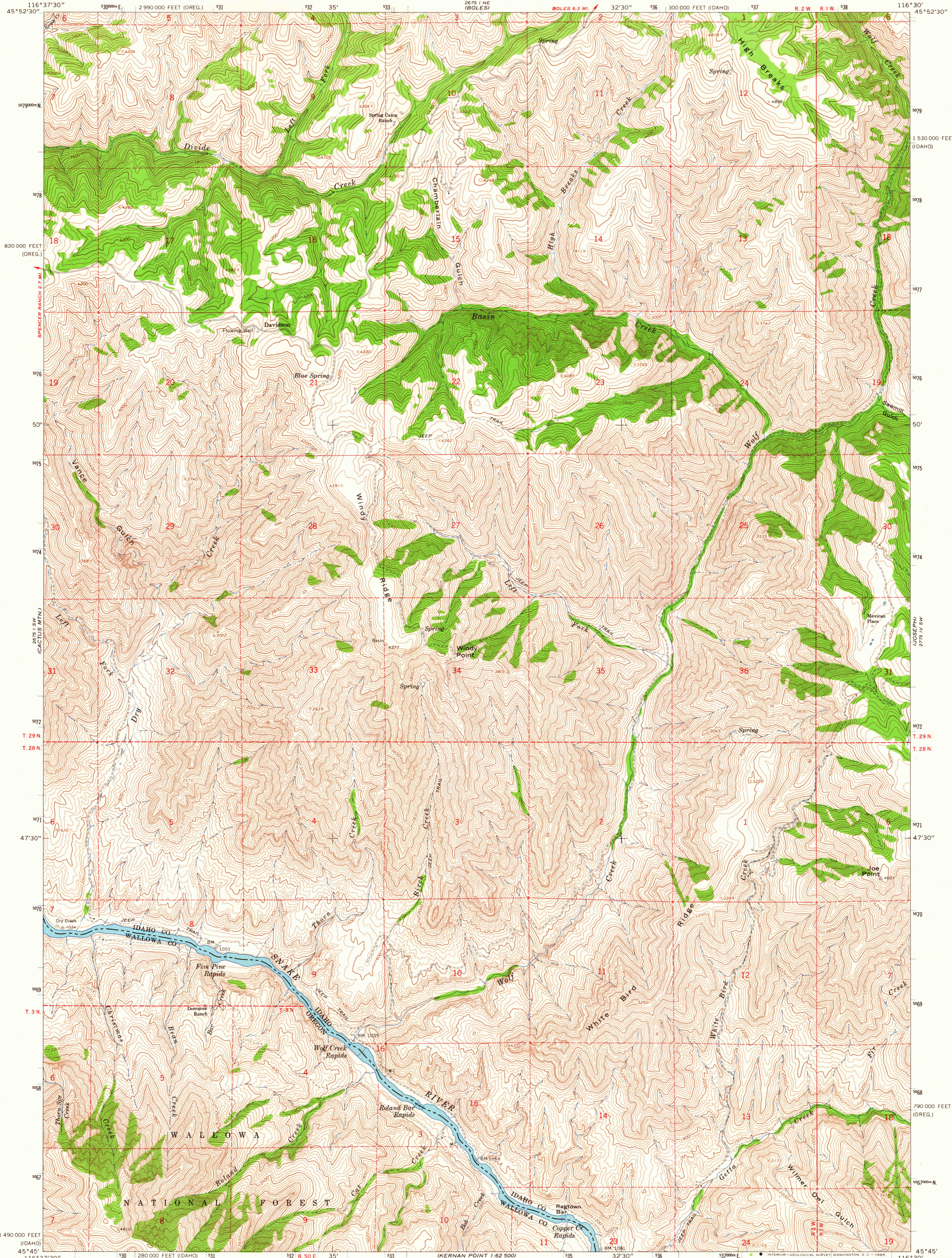


UNITED STATES
DEPARTMENT OF THE INTERIOR
GEOLOGICAL SURVEY

WOLF CREEK QUADRANGLE
IDAHO-OREGON
7.5 MINUTE SERIES (TOPOGRAPHIC)



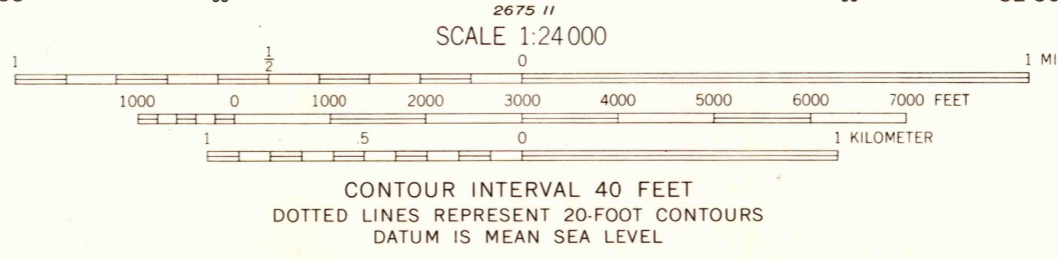
Mapped, edited, and published by the Geological Survey

Control by USC&GS

Topography by photogrammetric methods from aerial photographs taken 1961. Field checked 1963

Polycyclic projection. 1927 North American datum 10,000-foot grids based on Idaho coordinate system, west zone, and Oregon coordinate system, north zone 1000-meter Universal Transverse Mercator grid ticks, zone 11, shown in blue

Where omitted, land lines have not been established



USGS
Historical File
Topographic Division

ROAD CLASSIFICATION
Light duty ————— Unimproved dirt - - - - -

WOLF CREEK, IDAHO-OREG.
N4545-W11630/7.5

1963

AMS 2675 1 SE—SERIES V893

U.S.G.S.
FILE COPY
TOPOGRAPHIC DIVISION
HISTORICAL

2290
MAY 12 1965
HISTORICAL

THIS MAP COMPLIES WITH NATIONAL MAP ACCURACY STANDARDS
FOR SALE BY U. S. GEOLOGICAL SURVEY, DENVER 25, COLORADO OR WASHINGTON 25, D. C.
A FOLDER DESCRIBING TOPOGRAPHIC MAPS AND SYMBOLS IS AVAILABLE ON REQUEST