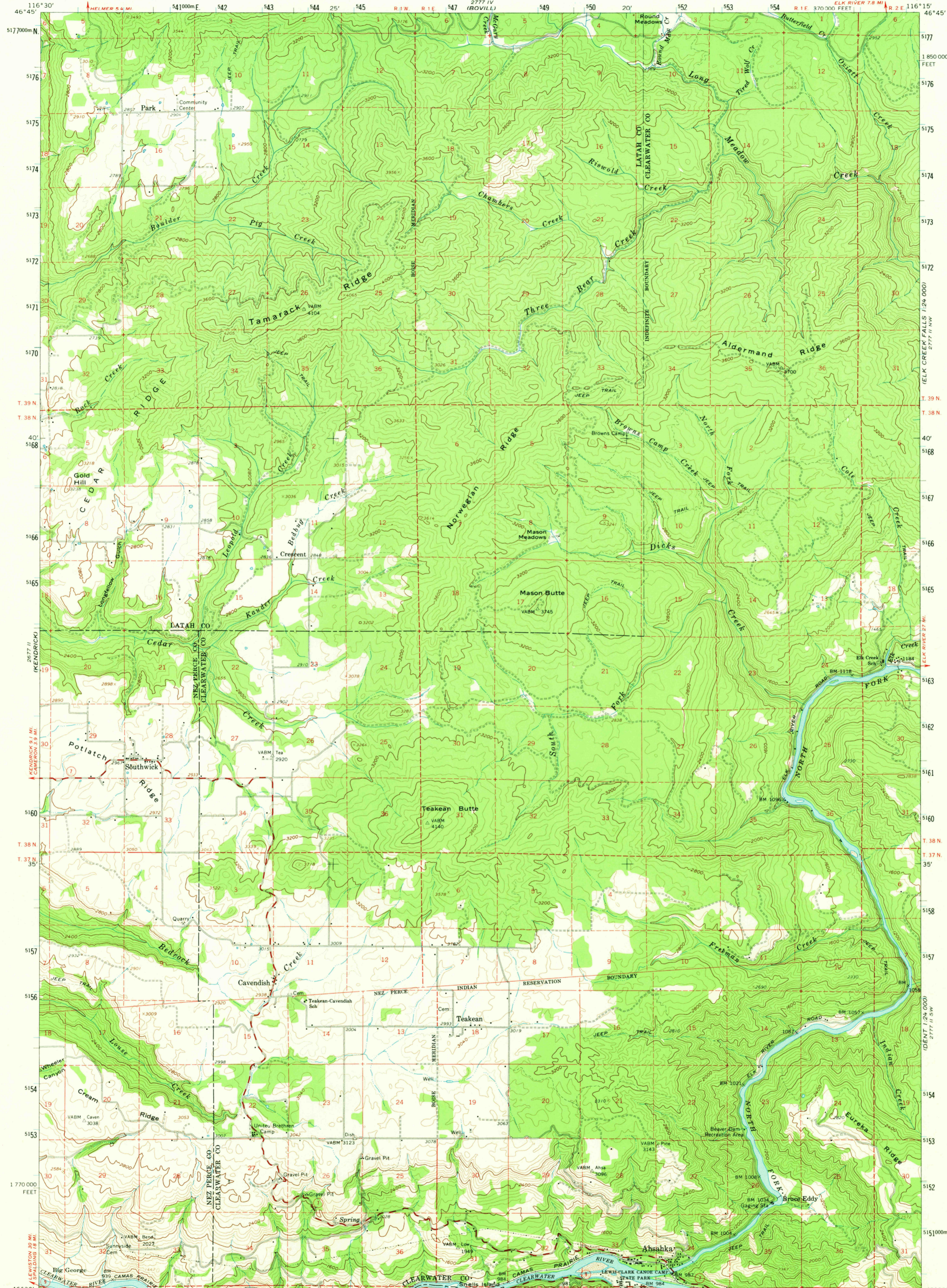
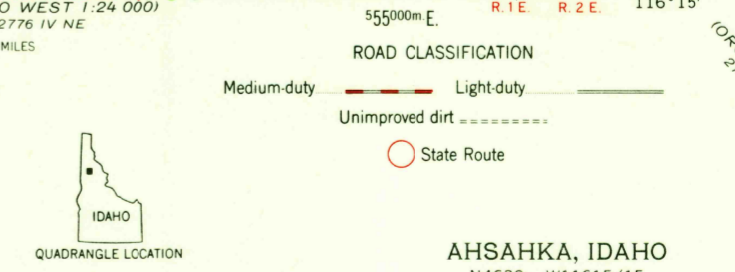
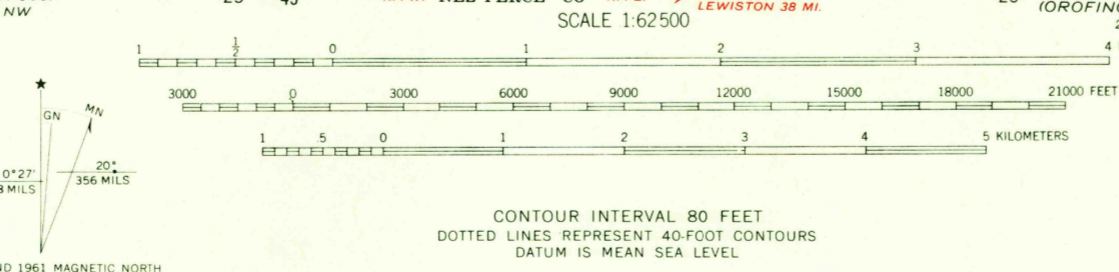


2777 I NW
1:24,000



Maped by the Geological Survey and the U.S. Coast and Geodetic Survey in cooperation with the Corp of Engineers Edited and published by the Geological Survey
Control by USGS, USC&GS, and USCE
Topography by photogrammetric methods from aerial photographs taken 1957. Field checked 1961
Polyconic projection. 1927 North American datum 10,000-foot grid based on Idaho coordinate system, west zone 1000-meter Universal Transverse Mercator grid ticks, zone 11, shown in blue



AHSAHKA, IDAHO
N4630-W11615/15
1961
AMS 2777 III-SERIES V793

JAN 31 1974

USGS
HISTORICAL FILE
TOPOGRAPHIC DIVISION

2345