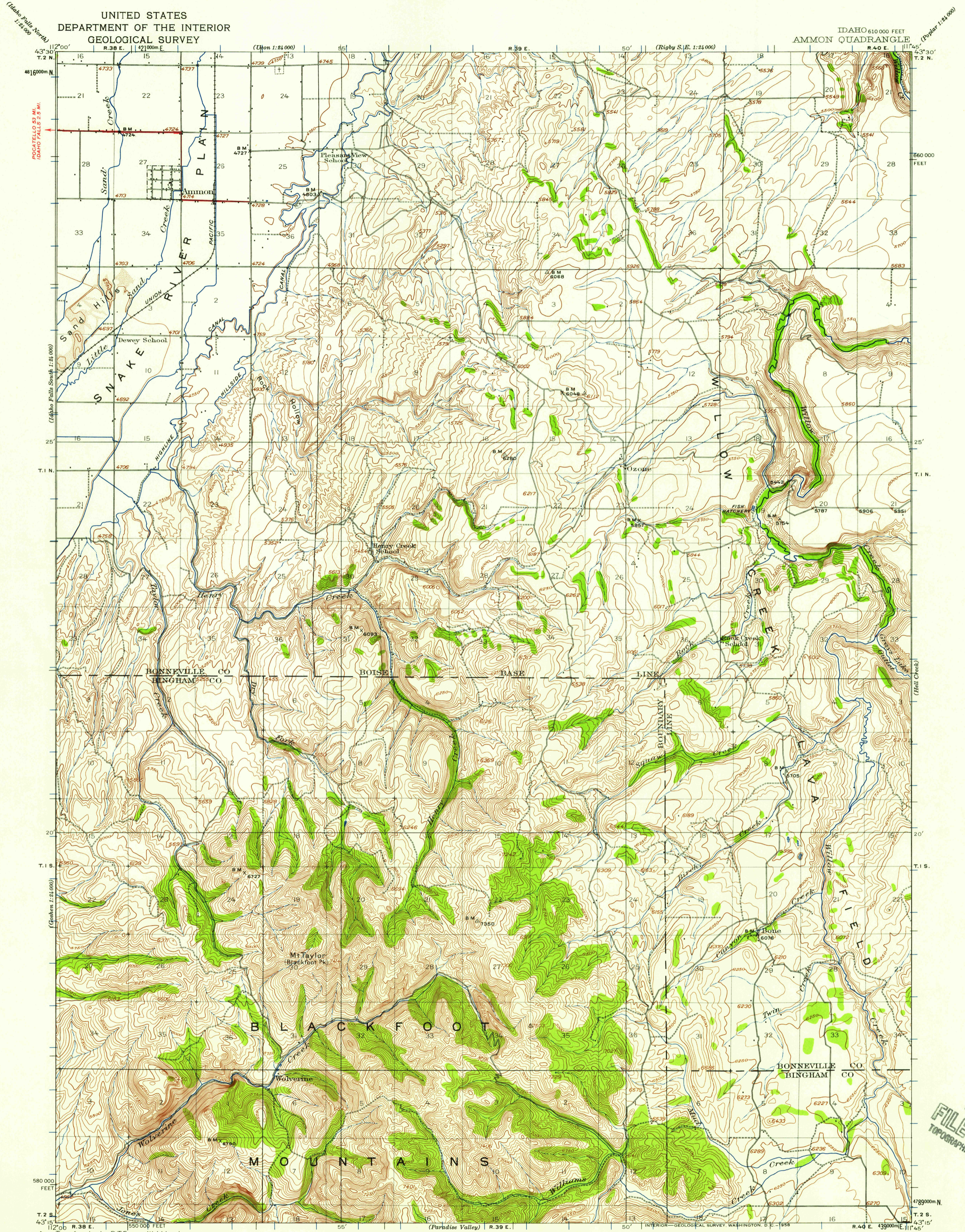


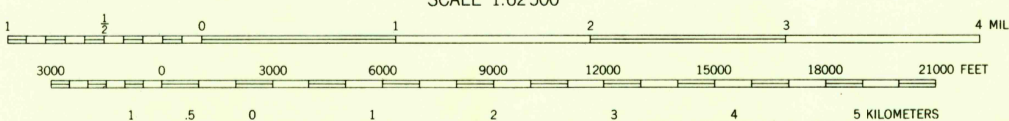
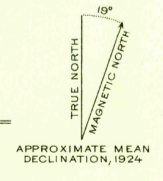
UNITED STATES
DEPARTMENT OF THE INTERIOR
GEOLOGICAL SURVEY

IDAHO 610 000 FEET
AMMON QUADRANGLE



Topography by R.T. Evans, W.J. Lloyd,
and C.G. Anderson
Surveyed in 1916 and 1924

ROAD CLASSIFICATION
 Heavy-duty ——— Light-duty ———
 Unimproved dirt - - - - -



CONTOUR INTERVAL 50 FEET
 DATUM IS MEAN SEA LEVEL

FOR SALE BY U. S. GEOLOGICAL SURVEY, DENVER 2, COLORADO OR WASHINGTON 25, D. C.
 A FOLDER DESCRIBING TOPOGRAPHIC MAPS AND SYMBOLS IS AVAILABLE ON REQUEST

Polynic projection. To place on 1927 North American datum
 move projection lines 100 feet north
 10,000-foot grid based on Idaho (East)
 rectangular coordinate system
 1000-meter Universal Transverse Mercator grid ticks,
 zone 12, shown in blue

USGS
 Historical File
 Topographic Division

AMMON, IDAHO
 N4315-W11145/15

1924

NOV 18 1958

U.S.G.S.
 FILE COPY
 TOPOGRAPHIC DIVISION

1460