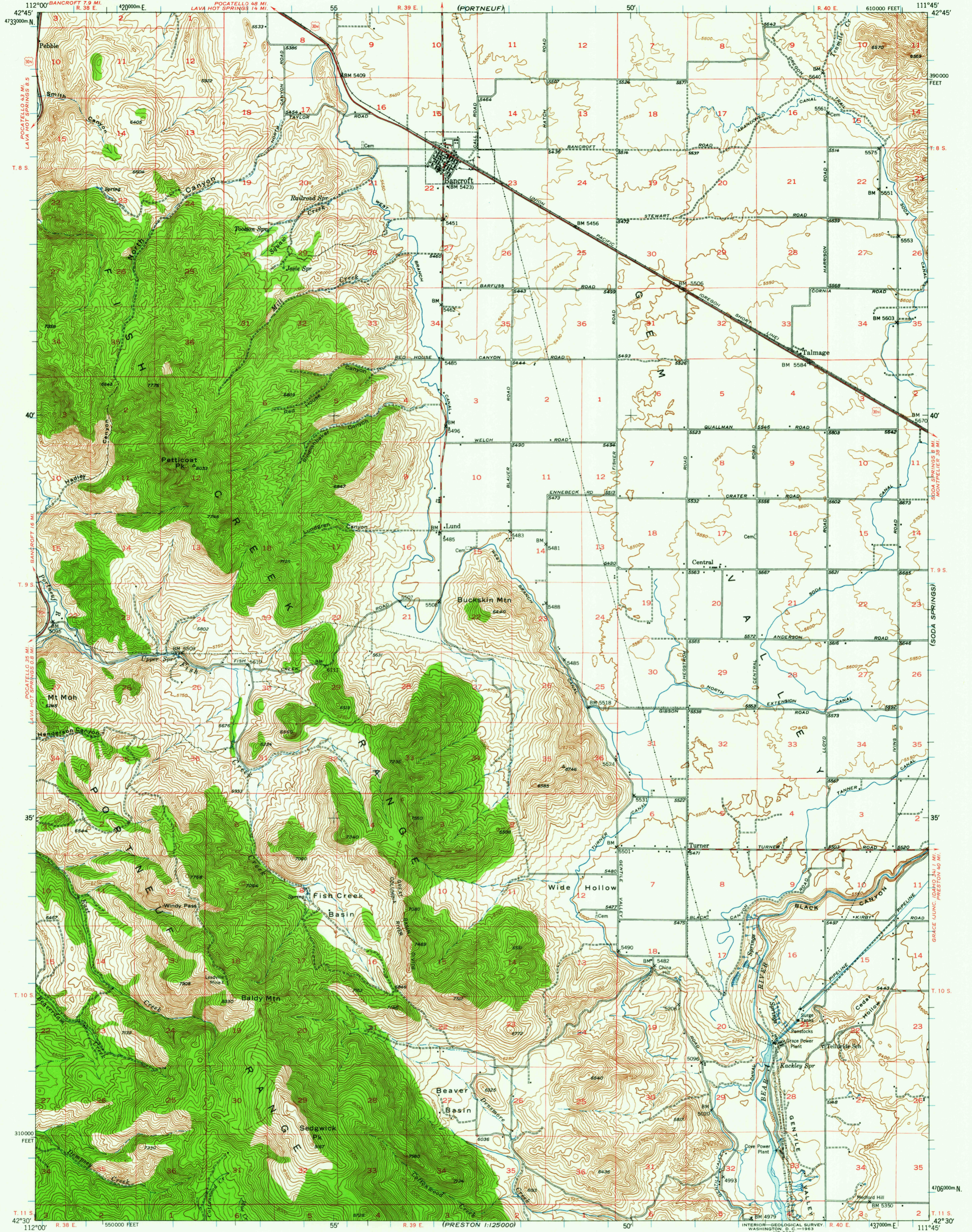
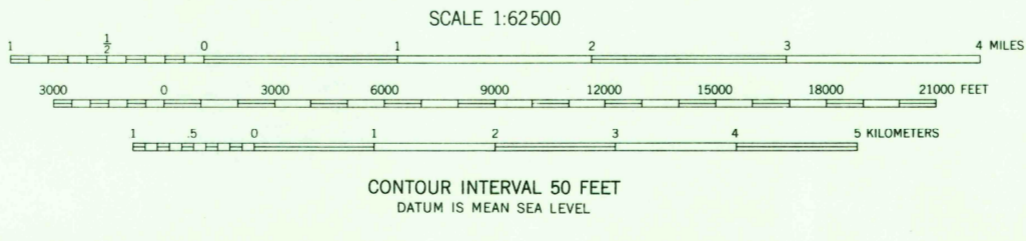


(HENRY)



Mapped, edited, and published by the Geological Survey
Control by USGS and USC&GS
Topography from aerial photographs by Manan Plotter, 1947-1948
and by plane table surveys, 1946-1947
Aerial photographs taken 1945
Polyconic projection. 1927 North American datum
10,000-foot grid based on Idaho coordinate system,
East zone
1000-meter Universal Transverse Mercator grid ticks,
zone 12, shown in blue



ROAD CLASSIFICATION
Heavy-duty ——— Light-duty ———
Medium-duty ——— Unimproved dirt ———
U. S. Route



BANCROFT, IDAHO
N4230-W1145'15
1948

THIS MAP COMPLIES WITH NATIONAL MAP ACCURACY STANDARDS
FOR SALE BY U. S. GEOLOGICAL SURVEY, WASHINGTON 25, D. C.
A FOLDER DESCRIBING TOPOGRAPHIC MAPS AND SYMBOLS IS AVAILABLE ON REQUEST

APP - B 1993

1675