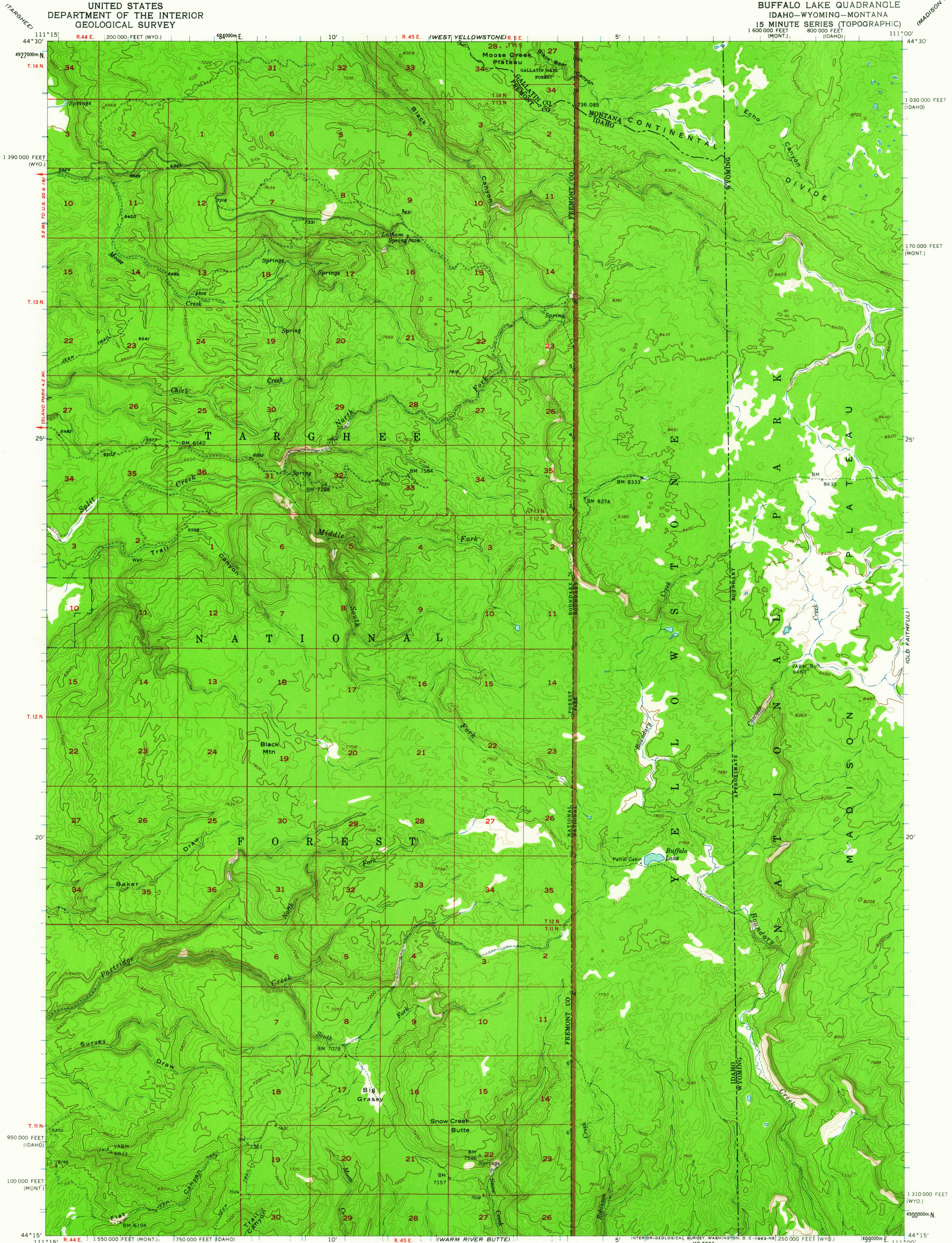
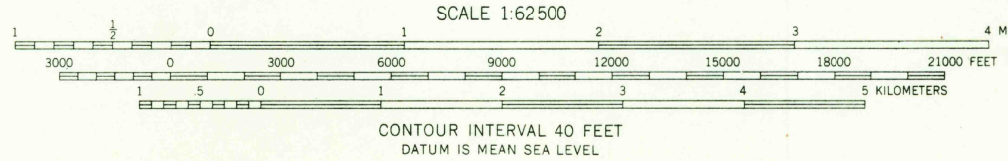


UNITED STATES  
DEPARTMENT OF THE INTERIOR  
GEOLOGICAL SURVEY

BUFFALO LAKE QUADRANGLE  
IDAHO-WYOMING-MONTANA  
15 MINUTE SERIES (TOPOGRAPHIC)



Mapped, edited, and published by the Geological Survey  
Control by USGS and USC&GS  
Topography from aerial photographs by Wild A-8 plotter  
Aerial photographs taken 1953. Field check 1957  
Polyconic projection. 1927 North American datum  
10,000-foot grid based on Idaho coordinate system, east zone,  
Wyoming coordinate system, west zone, and Montana coordinate  
system, south zone  
1000-meter Universal Transverse Mercator grid ticks,  
zone 12, shown in blue  
Unchecked elevations are shown in brown



USGS  
Historical File  
Topographic Division

ROAD CLASSIFICATION  
Light-duty ————— Unimproved dirt - - - - -



BUFFALO LAKE, IDAHO-WYO.-MONT.  
N4415-W11100/15

THIS MAP COMPLIES WITH NATIONAL MAP ACCURACY STANDARDS  
FOR SALE BY U. S. GEOLOGICAL SURVEY, DENVER 25, COLORADO OR WASHINGTON 25, D. C.  
A FOLDER DESCRIBING TOPOGRAPHIC MAPS AND SYMBOLS IS AVAILABLE ON REQUEST

1957  
USGS  
TOPOGRAPHIC DIVISION

4310

MAY - 2 1963