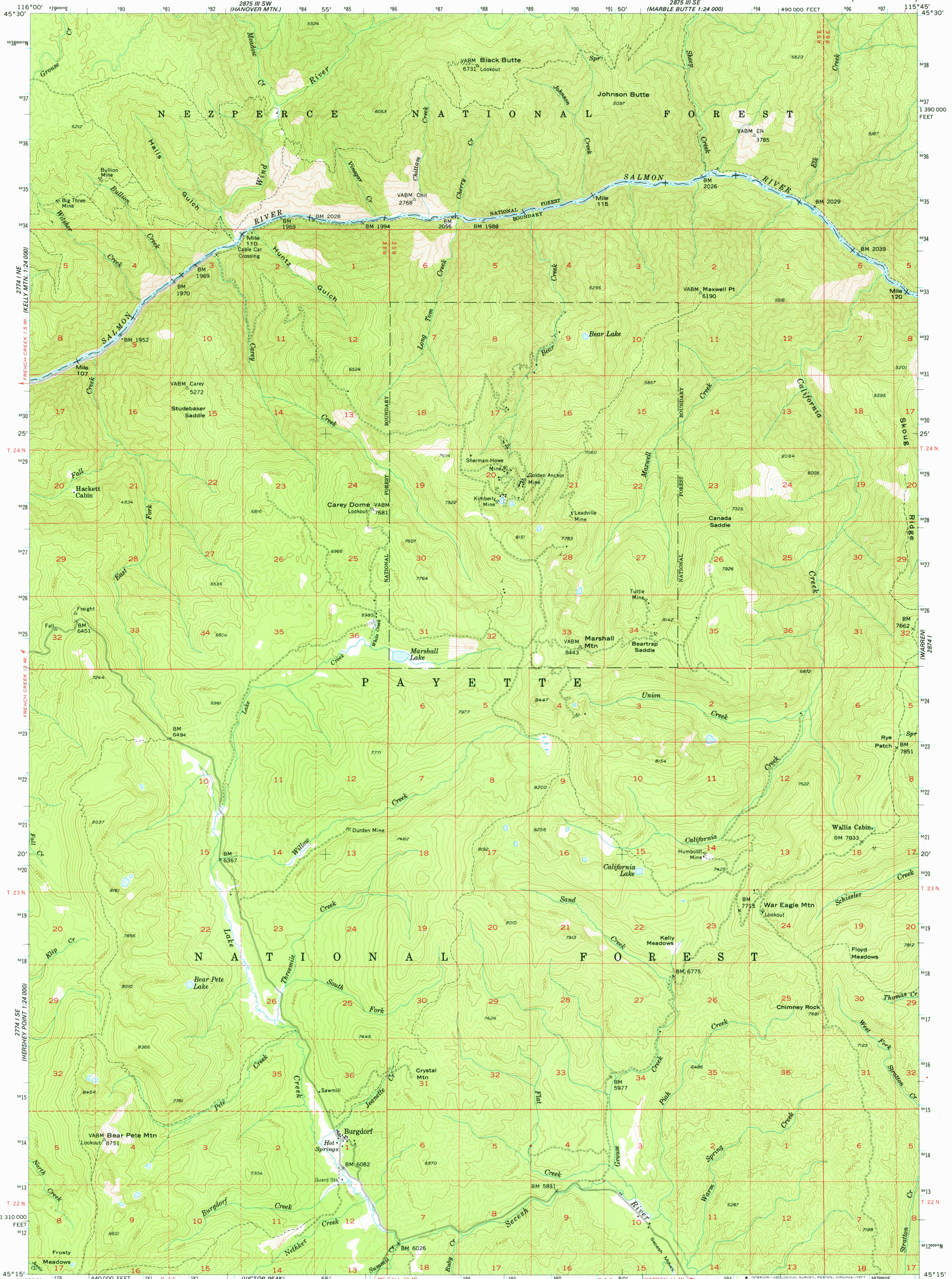


2774 I SE
(ROPER CREEK)
1:24 000

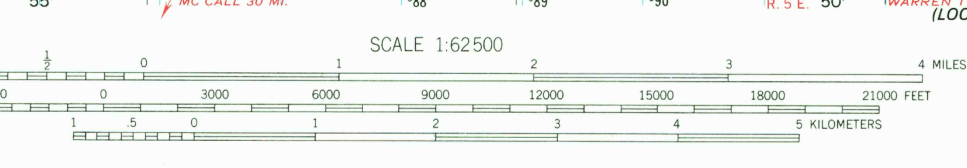
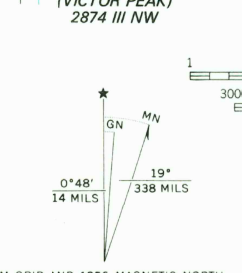
UNITED STATES
DEPARTMENT OF THE INTERIOR
GEOLOGICAL SURVEY

BURGDORF QUADRANGLE
IDAHO-IDAHO CO.
15 MINUTE SERIES (TOPOGRAPHIC)



2774 I SE
(BLACK MOUNTAIN)
1:24 000

Mapped, edited, and published by the Geological Survey
Control by USGS and USC&GS
Topography from aerial photographs by multiplex methods
Aerial photographs taken 1946. Field check 1956
Polyconic projection. 1927 North American datum
10,000-foot grid based on Idaho coordinate system, west zone
1000-meter Universal Transverse Mercator grid ticks,
zone 11, shown in blue
Dashed land lines indicate approximate locations



CONTOUR INTERVAL 80 FEET
NATIONAL GEODETIC VERTICAL DATUM OF 1929

THIS MAP COMPLIES WITH NATIONAL MAP ACCURACY STANDARDS
FOR SALE BY U. S. GEOLOGICAL SURVEY, DENVER, COLORADO 80225, OR RESTON, VIRGINIA 22092
A FOLDER DESCRIBING TOPOGRAPHIC MAPS AND SYMBOLS IS AVAILABLE ON REQUEST



ROAD CLASSIFICATION
Light-duty ——— Unimproved dirt - - - - -

BURGDORF, IDAHO
N4515-W11545/15

1956
AMS 2874 IV-SERIES V793

USGS
Historical File
Topographic Division

JUN 13 1977
2,200