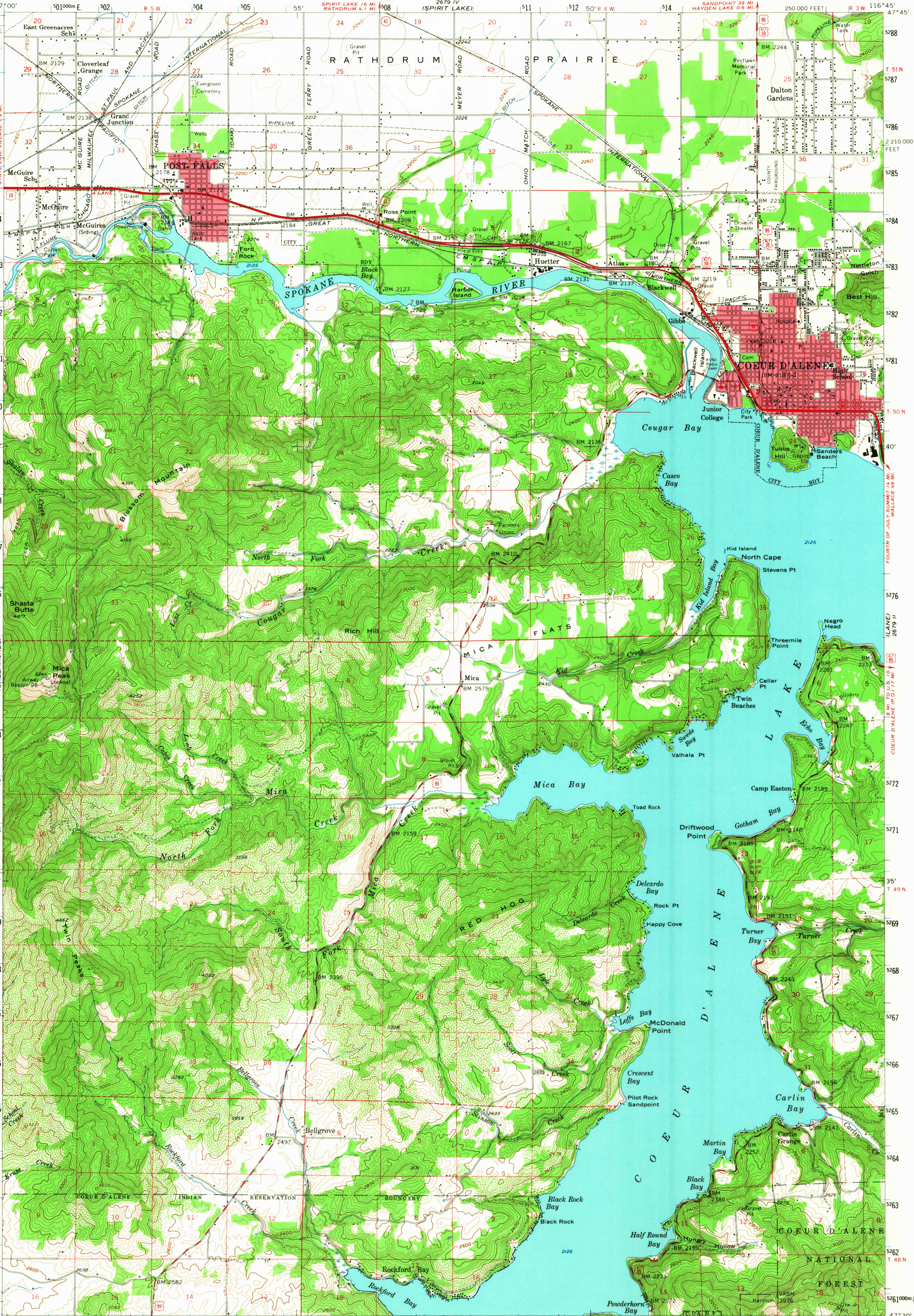


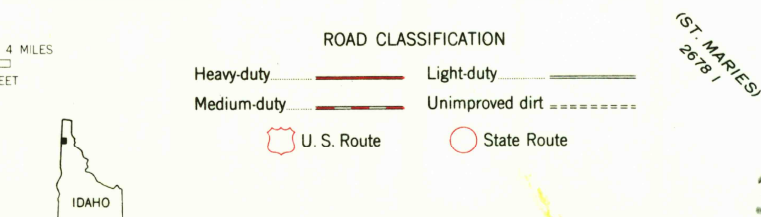
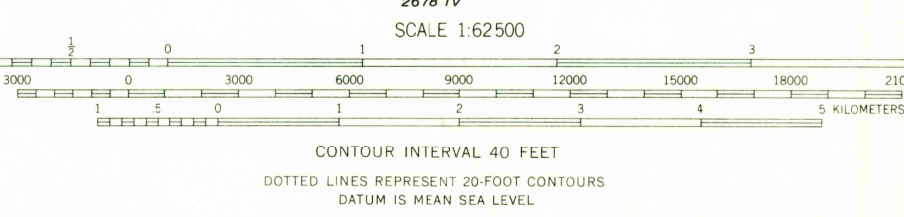
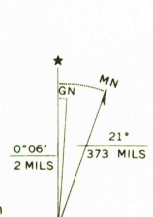
117°00' 47°45' 5288000m N. T. 51 N. 5284 5283 5282 5281 5280 5278 5277 5276 5273 5272 5271 5269 5268 5267 5266 5265 5264 5263 5262 5261000m N. 47°30' 117°00' 2130000 FEET 47°30' 117°00' 2130000 FEET

UNITED STATES
DEPARTMENT OF THE INTERIOR
GEOLOGICAL SURVEY

COEUR D'ALENE QUADRANGLE
IDAHO-KOOTENAI CO.
15 MINUTE SERIES (TOPOGRAPHIC)



Maped, edited, and published by the Geological Survey
Control by USGS and USC&GS
Topography from aerial photographs by ER-55 plotter
Aerial photographs taken 1954. Field check 1957
Polyconic projection. 1927 North American datum
10,000-foot grid based on Idaho coordinate system, west zone
1000-meter Universal Transverse Mercator grid ticks,
zone 11, shown in blue
Red tint indicates areas in which only landmark buildings are shown
Dashed land lines indicate approximate locations
Unchecked elevations are shown in brown



COEUR D'ALENE, IDAHO
N4730-W11645/15
1957
AMS 2679 III-SERIES V793

U.S.G.S.
FILE COPY
TOPOGRAPHIC DIVISION

3570
FEB 14 1961