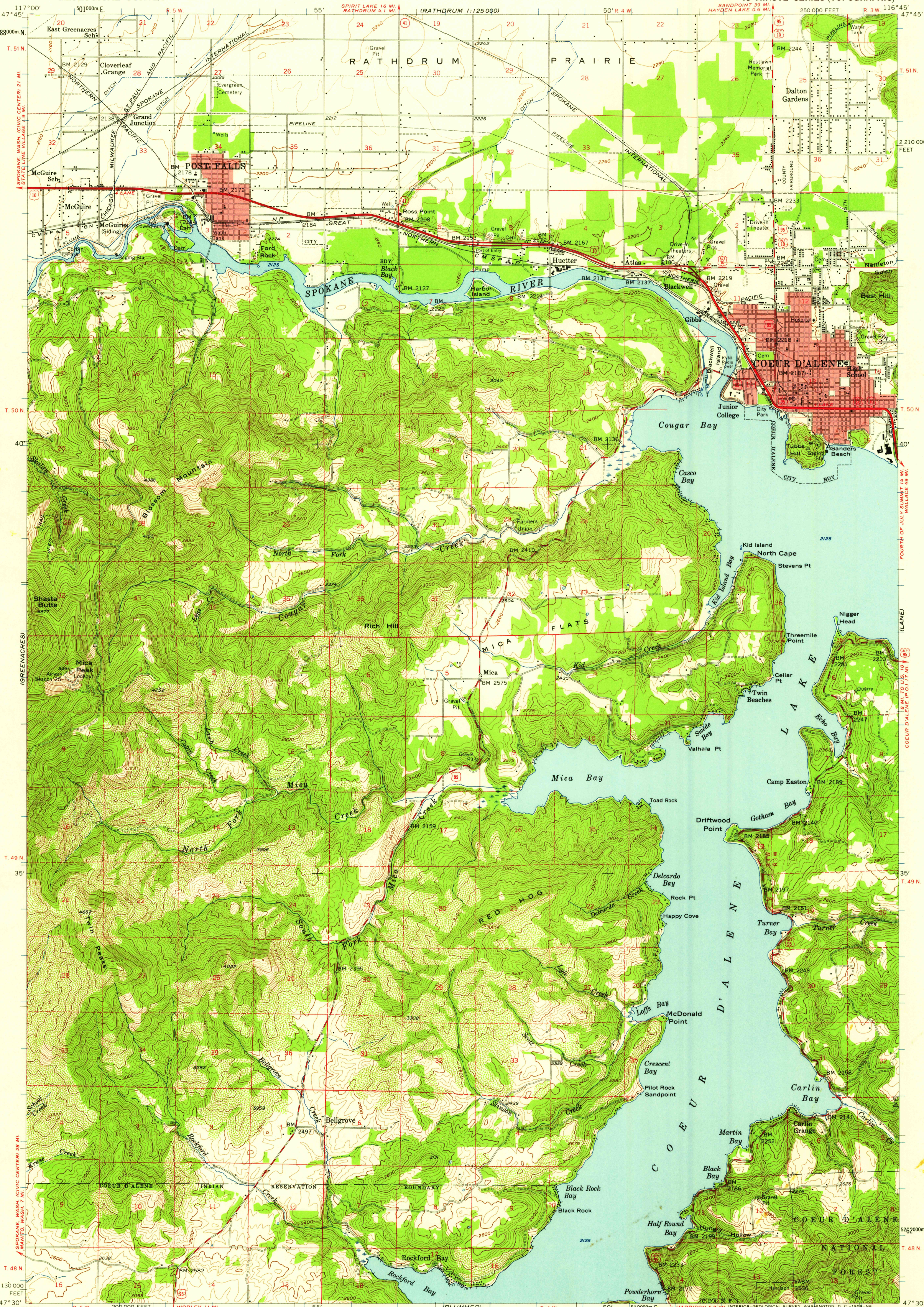


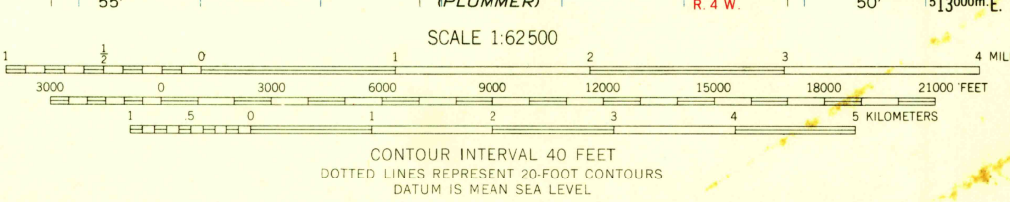
MT. SPOKANE  
T. 51 N  
T. 50 N  
T. 49 N  
T. 48 N  
FAIRFIELD

UNITED STATES  
DEPARTMENT OF THE INTERIOR  
GEOLOGICAL SURVEY

COEUR D'ALENE QUADRANGLE  
IDAHO-KOOTENAI CO.  
15 MINUTE SERIES (TOPOGRAPHIC)



Mapped, edited, and published by the Geological Survey  
Control by USGS and USC&GS  
Topography from aerial photographs by ER-55 plotter  
Aerial photographs taken 1954. Field check 1957  
Polyconic projection. 1927 North American datum  
10,000-foot grid based on Idaho coordinate system, west zone  
1000-meter Universal Transverse Mercator grid ticks,  
zone 11, shown in blue  
Red tint indicates areas in which only landmark buildings are shown  
Dashed land lines indicate approximate locations  
Unchecked elevations are shown in brown



ROAD CLASSIFICATION  
Heavy-duty ——— Light-duty ———  
Medium-duty ——— Unimproved dirt ———  
U. S. Route State Route



THIS MAP COMPLIES WITH NATIONAL MAP ACCURACY STANDARDS  
FOR SALE BY U.S. GEOLOGICAL SURVEY, DENVER 25, COLORADO OR WASHINGTON 25, D. C.  
A FOLDER DESCRIBING TOPOGRAPHIC MAPS AND SYMBOLS IS AVAILABLE ON REQUEST

USGS  
Historical File  
Topographic Division

COEUR D'ALENE, IDAHO  
N4730-W11645/15  
1957

U.S.G.S.  
FILE COPY  
TOPOGRAPHIC DIVISION

AUG 13 1959

3015