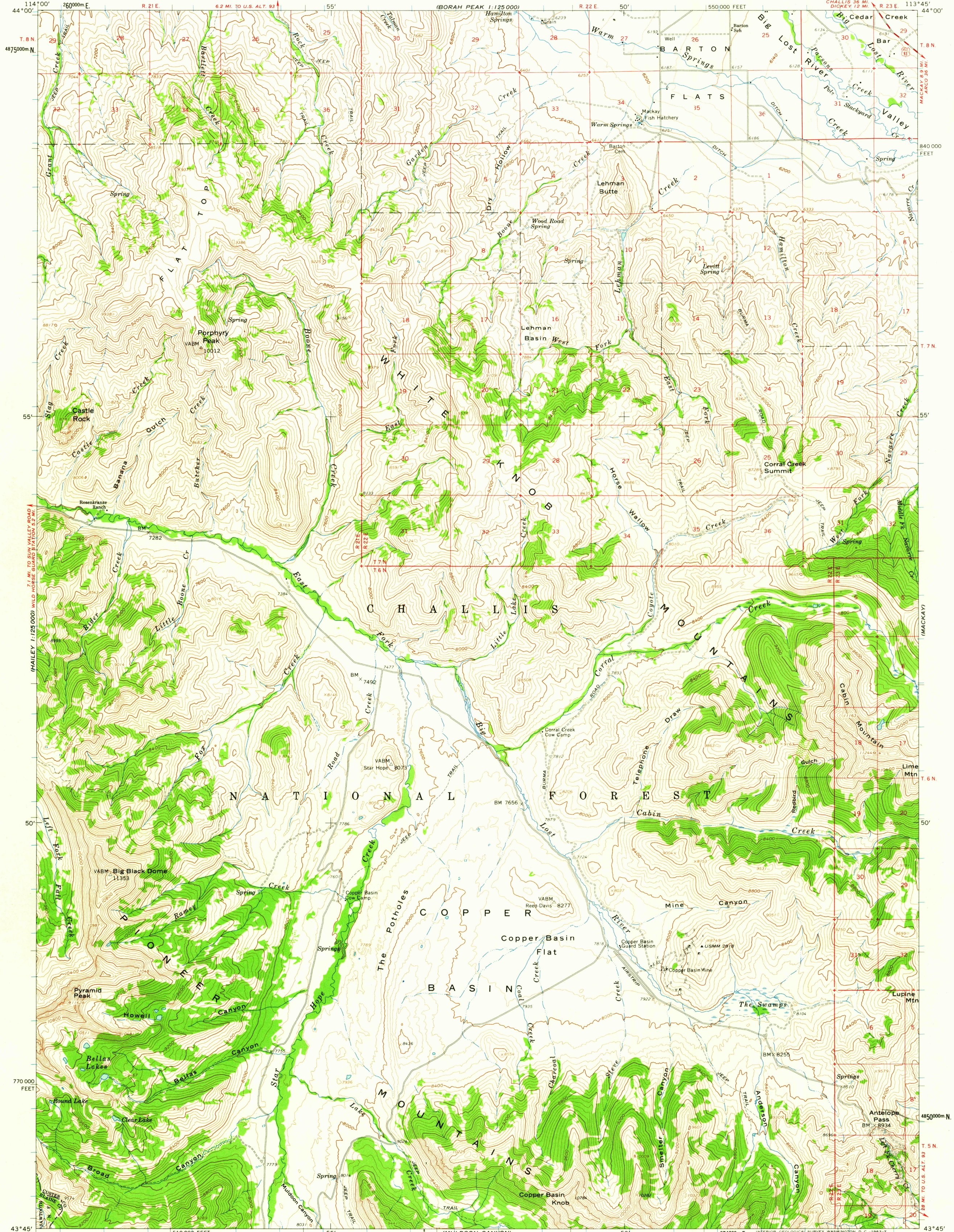
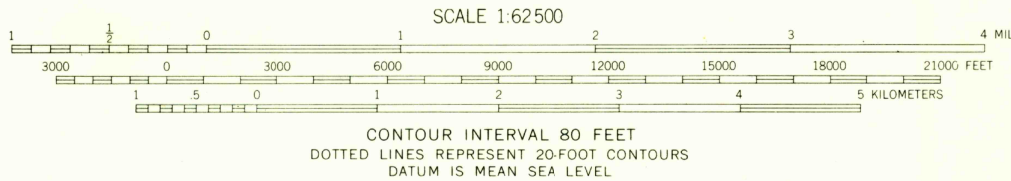


UNITED STATES
DEPARTMENT OF THE INTERIOR
GEOLOGICAL SURVEY

COPPER BASIN QUADRANGLE
IDAHO
15 MINUTE SERIES (TOPOGRAPHIC)



Mapped, edited, and published by the Geological Survey
Control by USGS and USC&GS
Topography from aerial photographs by photogrammetric methods
Aerial photographs taken 1957. Field check 1960
Polyconic projection 1927 North American datum
10,000-foot grid based on Idaho coordinate system, central zone
1000-meter Universal Transverse Mercator grid ticks,
zone 12, shown in blue
Land lines unsurveyed in T. 5, 6, and 7 N.-R. 21 E.,
and T. 5 and 6 N.-R. 22 E.



ROAD CLASSIFICATION
Medium-duty — Light-duty
Unimproved dirt
U.S. Route



U.S.G.S.
USGS COPPER BASIN, IDAHO
N4345-W11345/15
Historical File
Topographic Division
1960

THIS MAP COMPLIES WITH NATIONAL MAP ACCURACY STANDARDS
FOR SALE BY U.S. GEOLOGICAL SURVEY, DENVER 25, COLORADO OR WASHINGTON 25, D. C.
A FOLDER DESCRIBING TOPOGRAPHIC MAPS AND SYMBOLS IS AVAILABLE ON REQUEST

MAR 22 1962

2/20