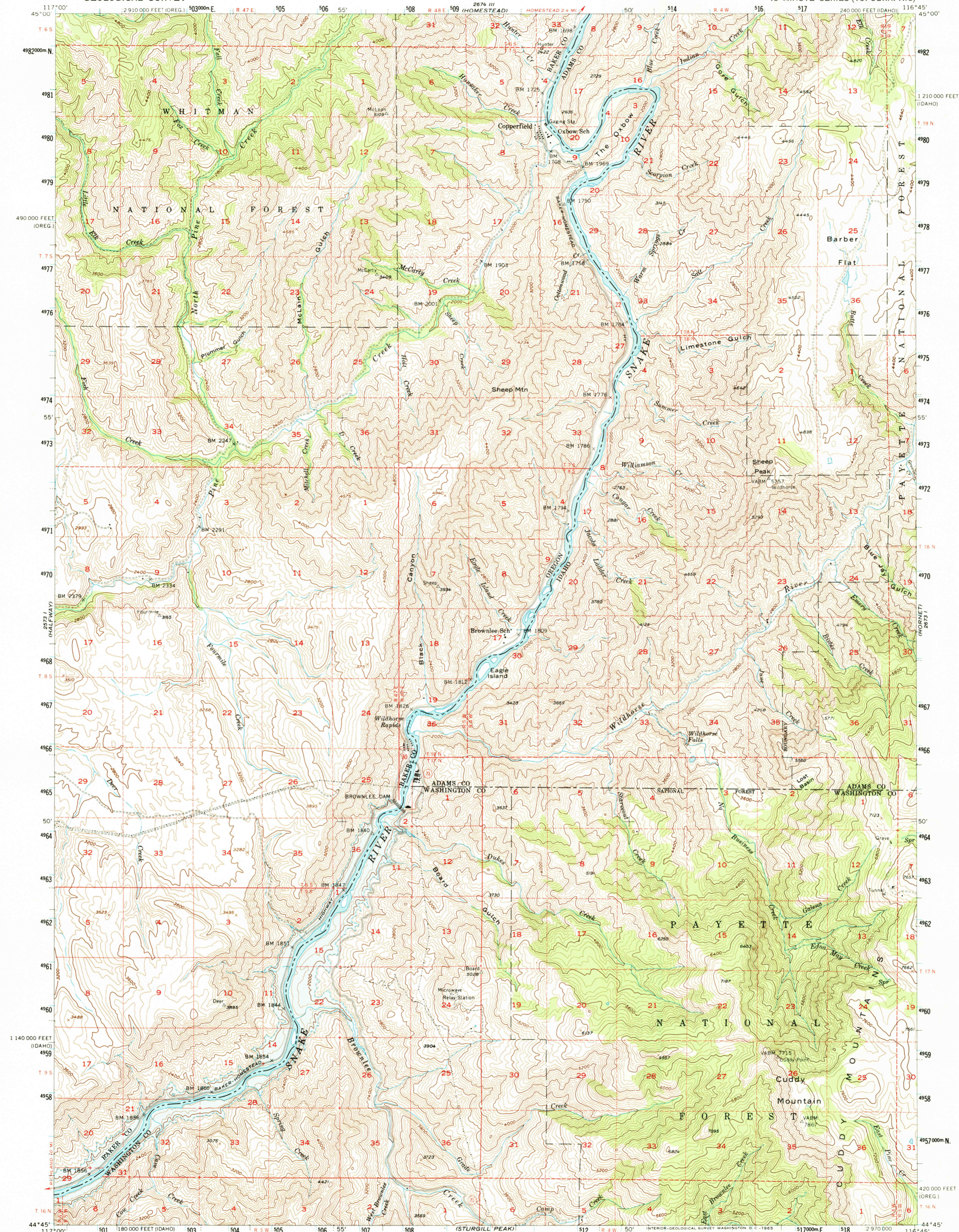
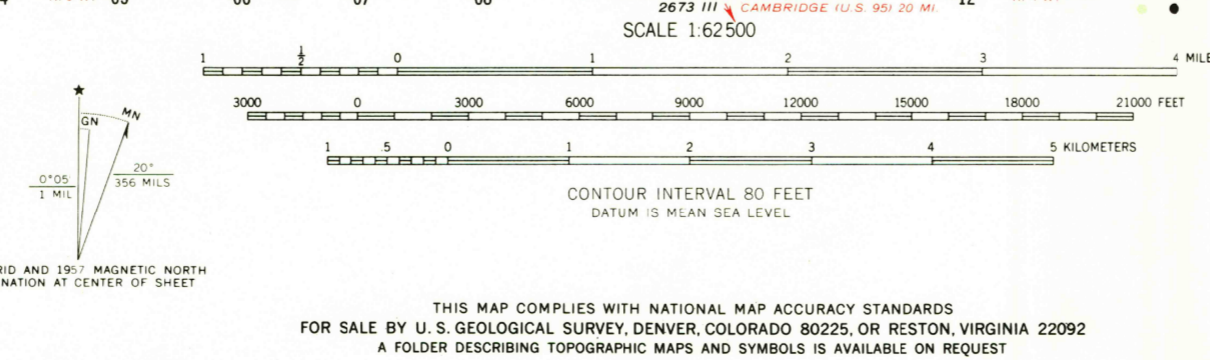


UNITED STATES  
DEPARTMENT OF THE INTERIOR  
GEOLOGICAL SURVEY

COPPERFIELD QUADRANGLE  
IDAHO-OREGON  
15 MINUTE SERIES (TOPOGRAPHIC)



Mapped, edited, and published by the Geological Survey  
Control by USGS and USC&GS  
Topography from aerial photographs by multiplex methods  
Aerial photographs taken 1951. Field check 1957  
Polyconic projection. 1927 North American datum  
10,000-foot grids based on Idaho coordinate system, west zone,  
and Oregon coordinate system, north zone  
1000-meter Universal Transverse Mercator grid ticks,  
zone 11, shown in blue  
Dashed land lines indicate approximate locations  
Blue hatching indicates areas to be submerged by  
Brownlee Dam at spillway elevation of 2077 feet  
Unchecked elevations are shown in brown



ROAD CLASSIFICATION  
Light-duty ——— Unimproved dirt - - - - -  
State Route ○

COPPERFIELD, IDAHO-OREG.  
N4445-W11645/15  
1957  
AMS 2673 IV-SERIES V793

THIS MAP COMPLIES WITH NATIONAL MAP ACCURACY STANDARDS  
FOR SALE BY U. S. GEOLOGICAL SURVEY, DENVER, COLORADO 80225, OR RESTON, VIRGINIA 22092  
A FOLDER DESCRIBING TOPOGRAPHIC MAPS AND SYMBOLS IS AVAILABLE ON REQUEST

