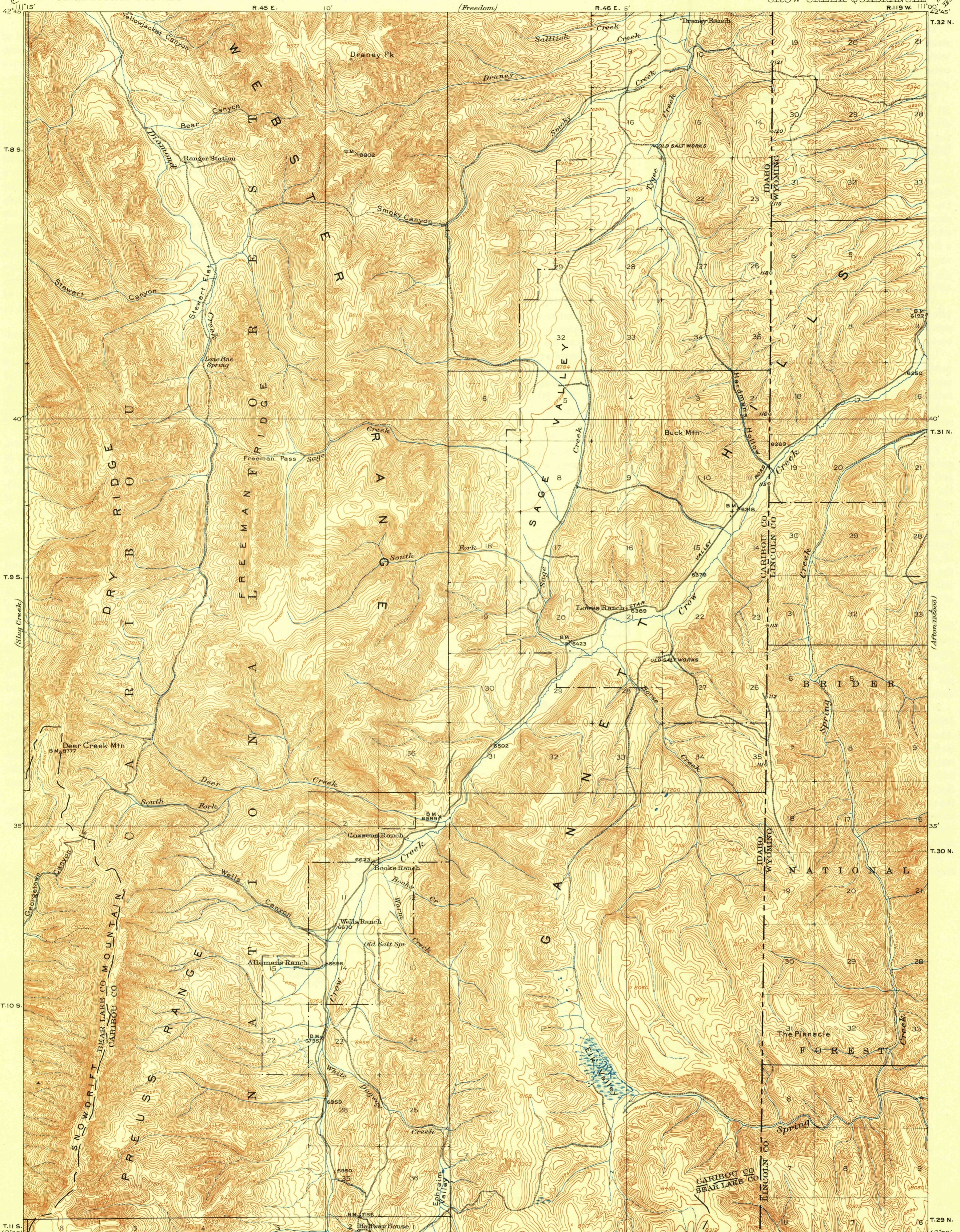


U. S. G. S.  
FILE COPY  
Inspection and Editing.

UNITED STATES  
DEPARTMENT OF THE INTERIOR  
GEOLOGICAL SURVEY

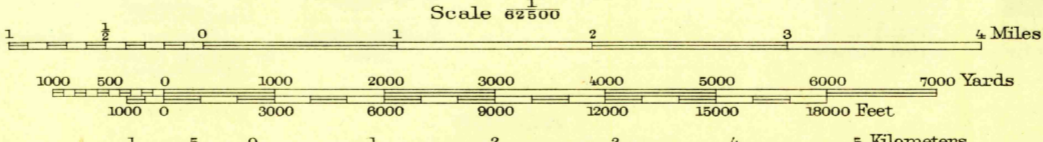
IDAHO-WYOMING  
CROW CREEK QUADRANGLE



U. S. G. S.  
FILE COPY  
Inspection and Editing.

U. S. G. S.  
FILE COPY  
Inspection and Editing.

R. B. Marshall, Chief Geographer.  
T. G. Gardine, Geographer in charge.  
Topography by Albert Pike.  
Control by Geo. T. Hawkins and O. G. Taylor.  
Surveyed in 1911-1912.



TRUE NORTH  
MAGNETIC NORTH  
APPROXIMATE MEAN  
DECLINATION 1912

Edition of Feb. 1915, reprinted 1948  
Polyconic projection.

USGS  
Historical File  
Topographic Division  
FILE COPY  
Inspection and Editing.

IDA-WYO.  
CROW CREEK  
N4230-W1100/15

DEC 7 1948 3230