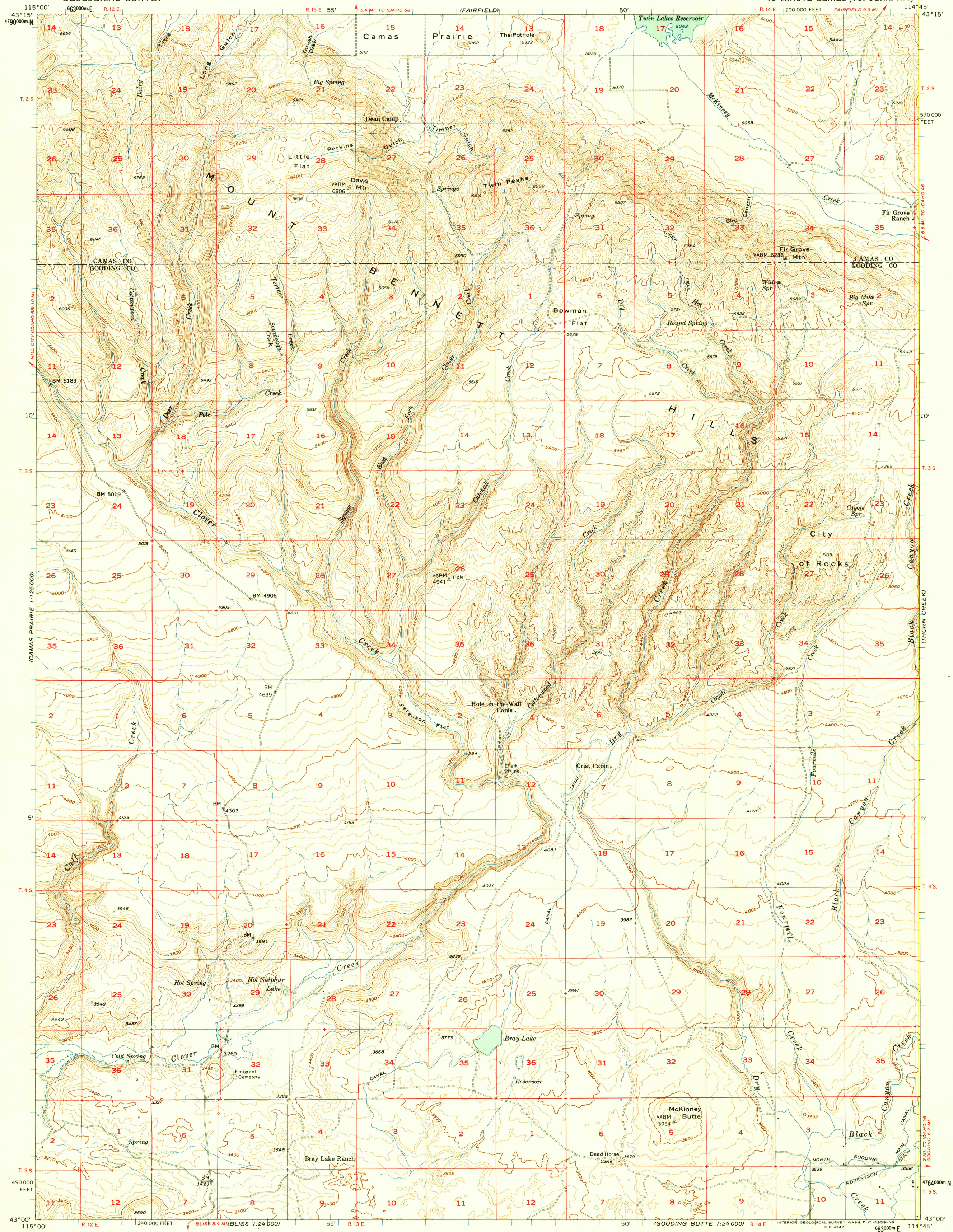


CAMAS PRAIRIE  
1:125,000

UNITED STATES  
DEPARTMENT OF THE INTERIOR  
GEOLOGICAL SURVEY

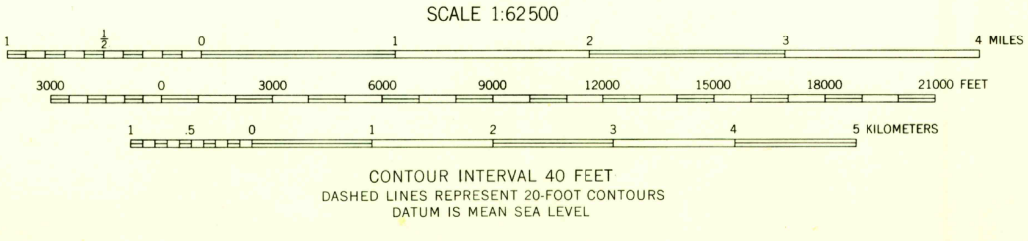
DAVIS MOUNTAIN QUADRANGLE  
IDAHO  
15 MINUTE SERIES (TOPOGRAPHIC)

BLAINE



Mapped, edited, and published by the Geological Survey  
Control by USGS and USC&GS  
Topography from aerial photographs by multiplex methods  
Aerial photographs taken 1954. Field check 1957  
Polyconic projection. 1927 North American datum  
10,000-foot grid based on Idaho coordinate system,  
central zone  
1000-meter Universal Transverse Mercator grid ticks,  
zone 11, shown in blue  
Unchecked elevations are shown in brown

TRUE NORTH  
MAGNETIC NORTH  
APPROXIMATE MEAN  
DECLINATION, 1957



USGS  
Historical File  
Topographic Division

ROAD CLASSIFICATION

DAVIS MOUNTAIN, IDAHO  
N4300—W11445/15

U.S.G.S.  
FILE COPY  
TOPOGRAPHIC DIVISION

FEB 17 1959

1950

THIS MAP COMPLIES WITH NATIONAL MAP ACCURACY STANDARDS  
FOR SALE BY U. S. GEOLOGICAL SURVEY, DENVER 2, COLORADO OR WASHINGTON 25, D. C.  
A FOLDER DESCRIBING TOPOGRAPHIC MAPS AND SYMBOLS IS AVAILABLE ON REQUEST