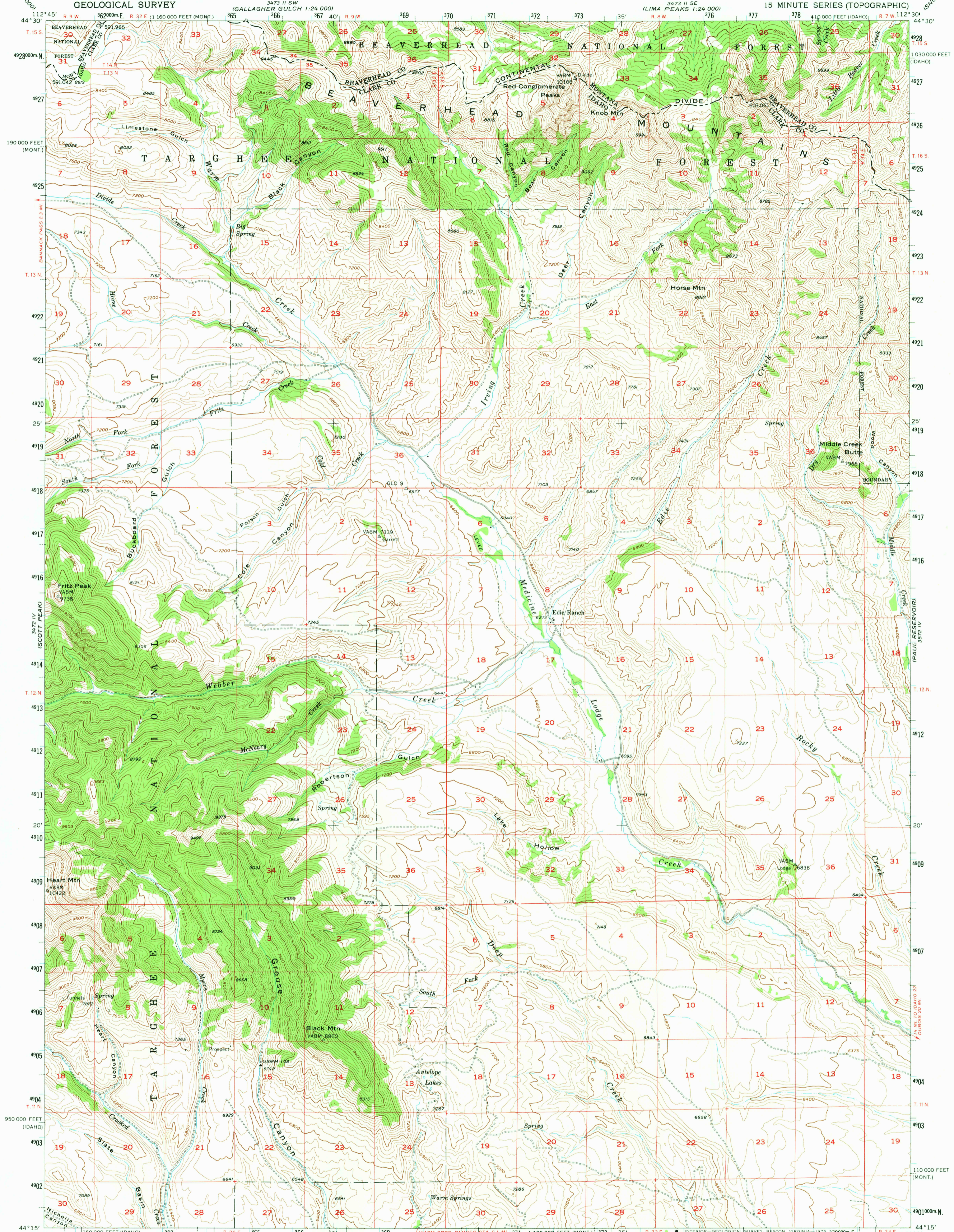


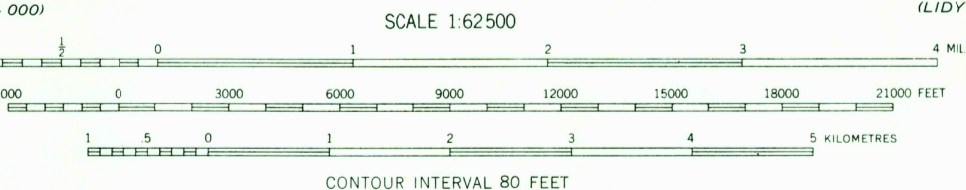
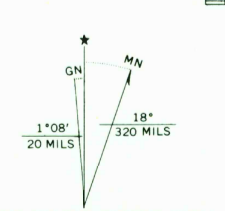
UNITED STATES  
DEPARTMENT OF THE INTERIOR  
GEOLOGICAL SURVEY

EDIE RANCH QUADRANGLE  
IDAHO-MONTANA  
15 MINUTE SERIES (TOPOGRAPHIC)



Maped, edited, and published by the Geological Survey  
Control by USGS and USC&GS

Topography from aerial photographs by Ketch plotter  
Aerial photographs taken 1954. Field check 1957  
Polyconic projection. 1927 North American datum  
10,000-foot grids based on Idaho coordinate system,  
east zone and Montana coordinate system, south zone  
1000-metre Universal Transverse Mercator grid ticks,  
zone 12, shown in blue  
Dashed land lines indicate approximate locations  
Unchecked elevations are shown in brown



CONTOUR INTERVAL 80 FEET  
NATIONAL GEODETIC VERTICAL DATUM OF 1929  
THIS MAP COMPLIES WITH NATIONAL MAP ACCURACY STANDARDS  
FOR SALE BY U.S. GEOLOGICAL SURVEY, DENVER, COLORADO 80225, OR RESTON, VIRGINIA 22092  
A FOLDER DESCRIBING TOPOGRAPHIC MAPS AND SYMBOLS IS AVAILABLE ON REQUEST

ROAD CLASSIFICATION  
Light-duty ——— Unimproved dirt - - - - -



EDIE RANCH, IDAHO-MONT.  
N4415-W11230/15

1957  
AMS 3472 I-SERIES V793

MAY 2 1975

USGS  
HISTORICAL FILE  
TOPOGRAPHIC DIVISION

1685