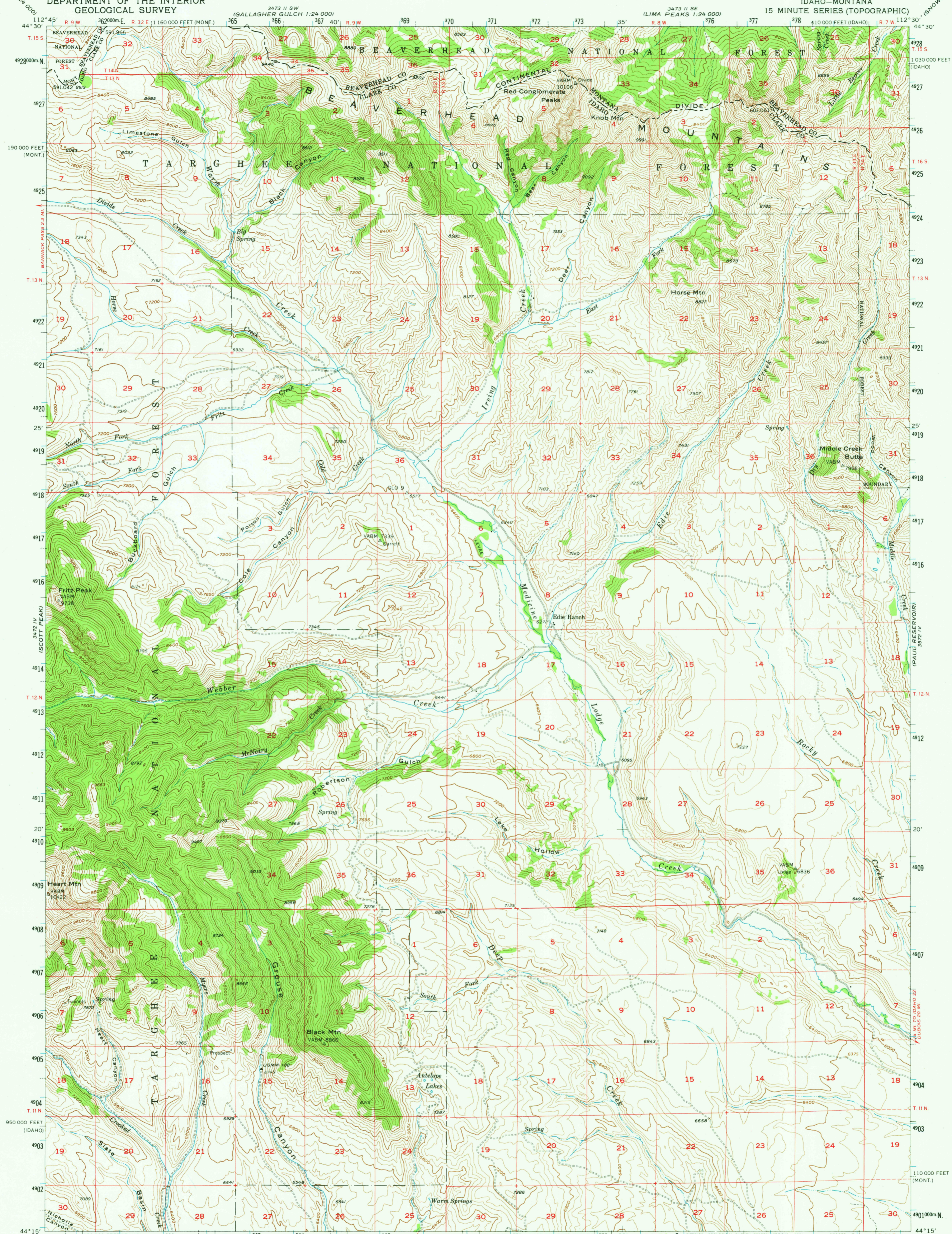


UNITED STATES  
DEPARTMENT OF THE INTERIOR  
GEOLOGICAL SURVEY

EDIE RANCH QUADRANGLE  
IDAHO-MONTANA  
15 MINUTE SERIES (TOPOGRAPHIC)



Mapped, edited, and published by the Geological Survey  
Control by USGS and USC&GS  
Topography from aerial photographs by Kelsh plotter  
Aerial photographs taken 1954. Field check 1957  
Polyconic projection. 1927 North American datum  
10,000-foot grids based on Idaho coordinate system,  
east zone and Montana coordinate system, south zone  
1000-meter Universal Transverse Mercator grid ticks,  
zone 12, shown in blue  
To place on the predicted North American Datum 1983  
move the projection lines 12 meters north and  
67 meters east  
There may be private inholdings within the boundaries of  
the National or State reservations shown on this map

SCALE 1:62500

0 3000 6000 9000 12000 15000 18000 21000 FEET

0 1 2 3 4 5 KILOMETERS

CONTOUR INTERVAL 80 FEET  
NATIONAL GEODETIC VERTICAL DATUM OF 1929

UTM GRID AND 1957 MAGNETIC NORTH DECLINATION AT CENTER OF SHEET

THIS MAP COMPLIES WITH NATIONAL MAP ACCURACY STANDARDS  
FOR SALE BY U.S. GEOLOGICAL SURVEY, DENVER, COLORADO 80225, OR RESTON, VIRGINIA 22092  
A FOLDER DESCRIBING TOPOGRAPHIC MAPS AND SYMBOLS IS AVAILABLE ON REQUEST

ROAD CLASSIFICATION

Light duty —————  
Unimproved dirt - - - - -

EDIE RANCH, IDAHO-MONT.  
N4415-W11230/15  
1957  
DMA 3472 I-SERIES V793

CASBOOSE CANYON 1:24 000  
3473 II SE  
3472 IV SE  
COPPER MTN 1:24 000  
3472 II NE

3473 II SW (GALLAGHER GULCH 1:24 000)  
3473 II SE (LIMA PEAKS 1:24 000)  
3472 IV SE (SCOTT PEAKS)  
3472 IV NE (SMALL 1:24 000)

JUL 6 1982

1600