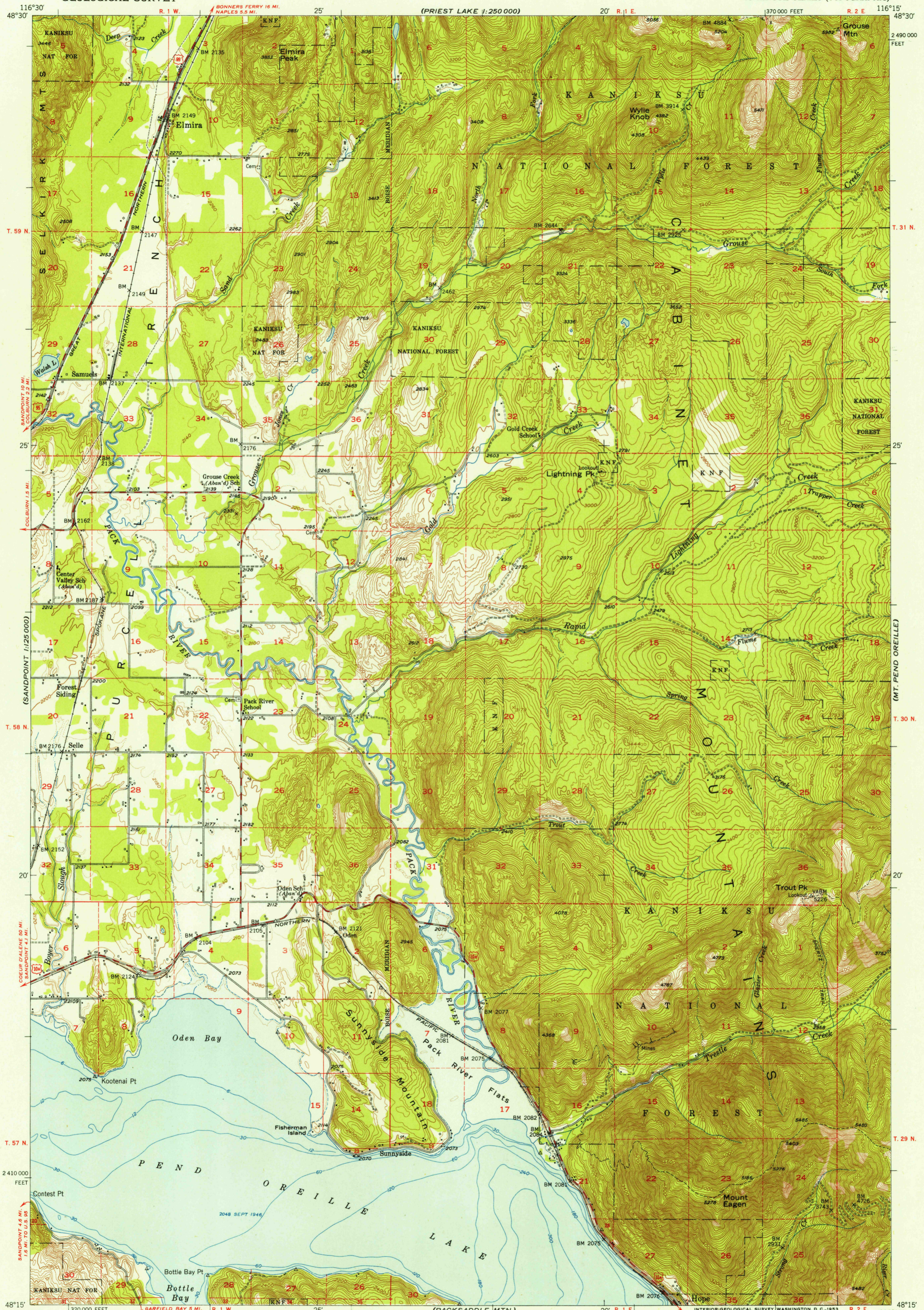


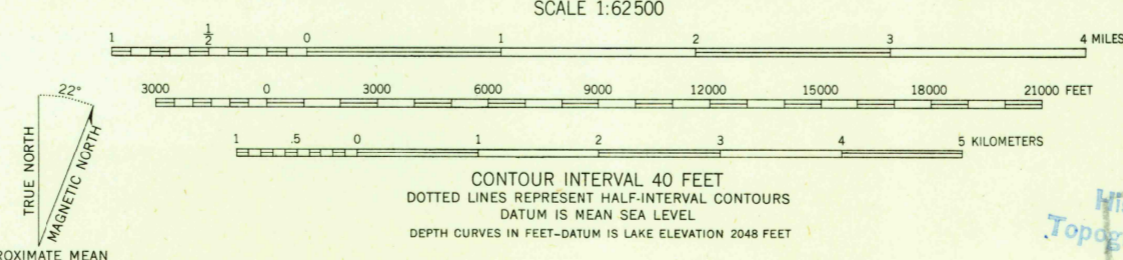
(PRIEST LAKE)
1:250,000

(PRIEST LAKE)
1:250,000

U. S. G. S.
FILE COPY
Inspection and Editing.



Maped, edited, and published by the Geological Survey
Control by USGS, USC&GS, USFS, and USBPR
Topography from aerial photographs by multiplex methods,
and by plane-table surveys 1951. Aerial photographs taken 1946
Hydrography of Pend Oreille Lake from USC&GS chart No. 6170
Polyconic projection. 1927 North American datum
10,000-foot grid based on Idaho coordinate system, west zone
Blue hatching indicates area to be submerged after completion
of Albeni Falls Dam. Spillway elevation 2062 feet.
Dashed land lines indicate approximate locations
Unchecked elevations are shown in brown



ROAD CLASSIFICATION

Heavy-duty	4 LANE, 6 LANE	Light-duty
Medium-duty	4 LANE, 6 LANE	Unimproved dirt
U.S. Route		State Route

THIS MAP COMPLIES WITH NATIONAL MAP ACCURACY STANDARDS
FOR SALE BY U. S. GEOLOGICAL SURVEY, FEDERAL CENTER, DENVER, COLORADO OR WASHINGTON 25, D. C.
A FOLDER DESCRIBING TOPOGRAPHIC MAPS AND SYMBOLS IS AVAILABLE ON REQUEST

U.S.G.S.
Historical File
Topographic Division
FILE COPY
Inspection and Editing.

ELMIRA, IDAHO
N4815-W11615/15
1951