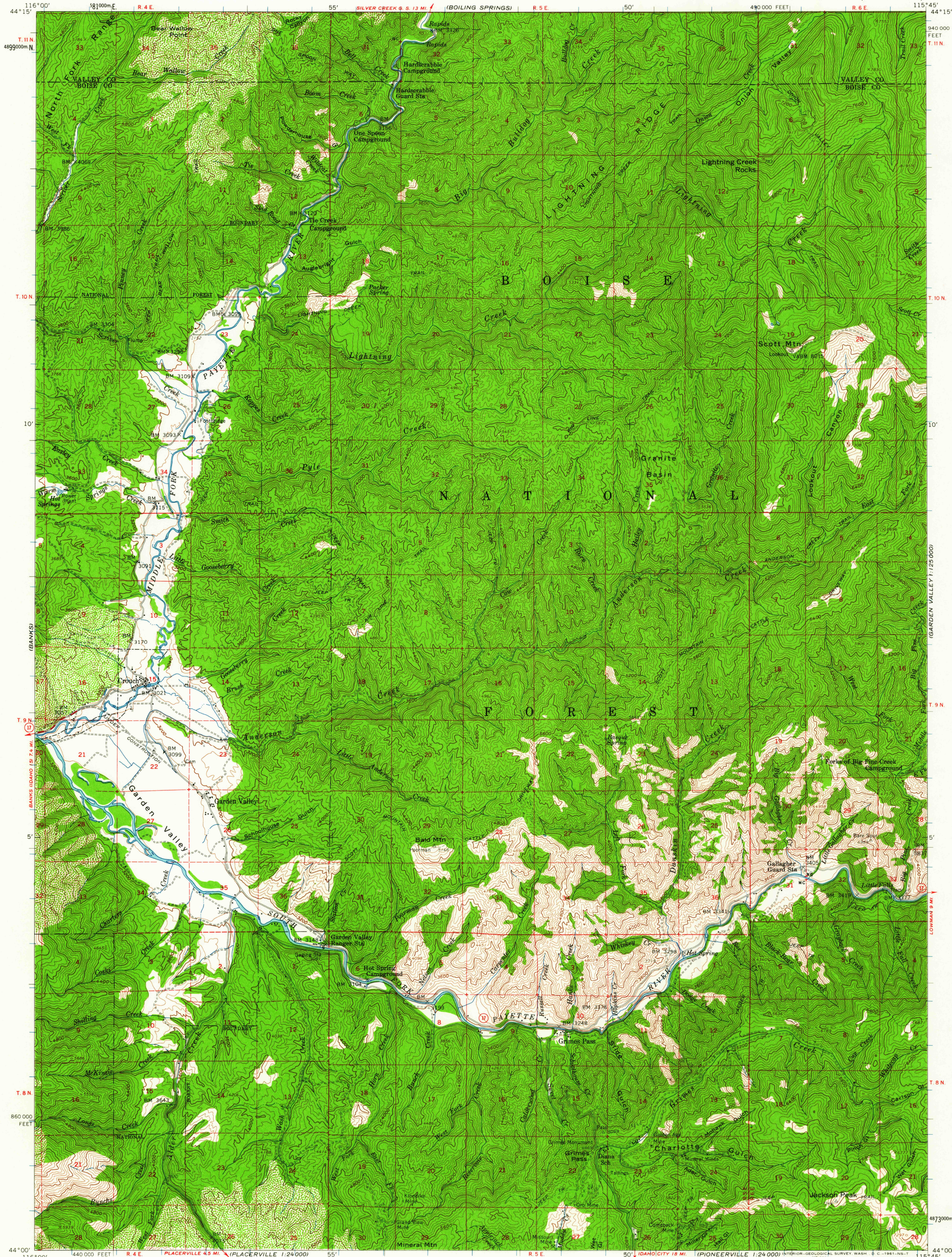


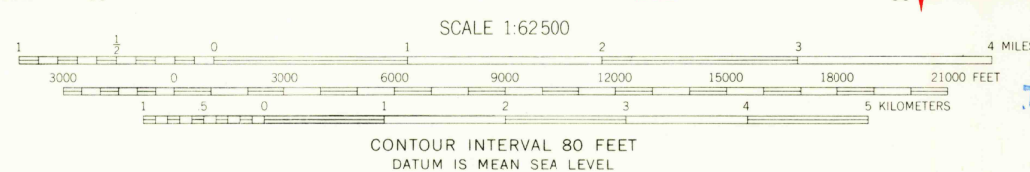
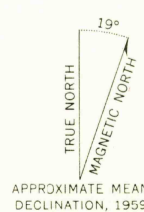
UNITED STATES
DEPARTMENT OF THE INTERIOR
GEOLOGICAL SURVEY

UNITED STATES
DEPARTMENT OF AGRICULTURE
FOREST SERVICE

GARDEN VALLEY QUADRANGLE
IDAHO
15 MINUTE SERIES (TOPOGRAPHIC)



Map by U. S. Forest Service
Edited and published by the Geological Survey
Control by USGS, USC&GS, and USFS
Topography from aerial photographs by photogrammetric methods. Aerial photographs taken 1946
Field check by the Geological Survey 1959
Polyconic projection. 1927 North American datum
10,000-foot grid based on Idaho coordinate system, west zone
1000-meter Universal Transverse Mercator grid ticks, zone 11, shown in blue
Dashed land lines indicate approximate locations
Land lines unsurveyed in part of T.10N.-R.4 E.



USGS
Historical File
Topographic Division



ROAD CLASSIFICATION
Medium duty
Light-duty
Unimproved dirt
State Route

Part of this area also covered by 1:24 000 scale map of Grimes Pass and Vicinity, surveyed 1933

GARDEN VALLEY, IDAHO
N4400—W11545/15

1959

THIS MAP COMPLIES WITH NATIONAL MAP ACCURACY STANDARDS
FOR SALE BY U. S. GEOLOGICAL SURVEY, DENVER 25, COLORADO OR WASHINGTON 25, D. C.
A FOLDER DESCRIBING TOPOGRAPHIC MAPS AND SYMBOLS IS AVAILABLE ON REQUEST

USGS
FILE COPY
TOPOGRAPHIC DIVISION

AUG 15 1961

3075