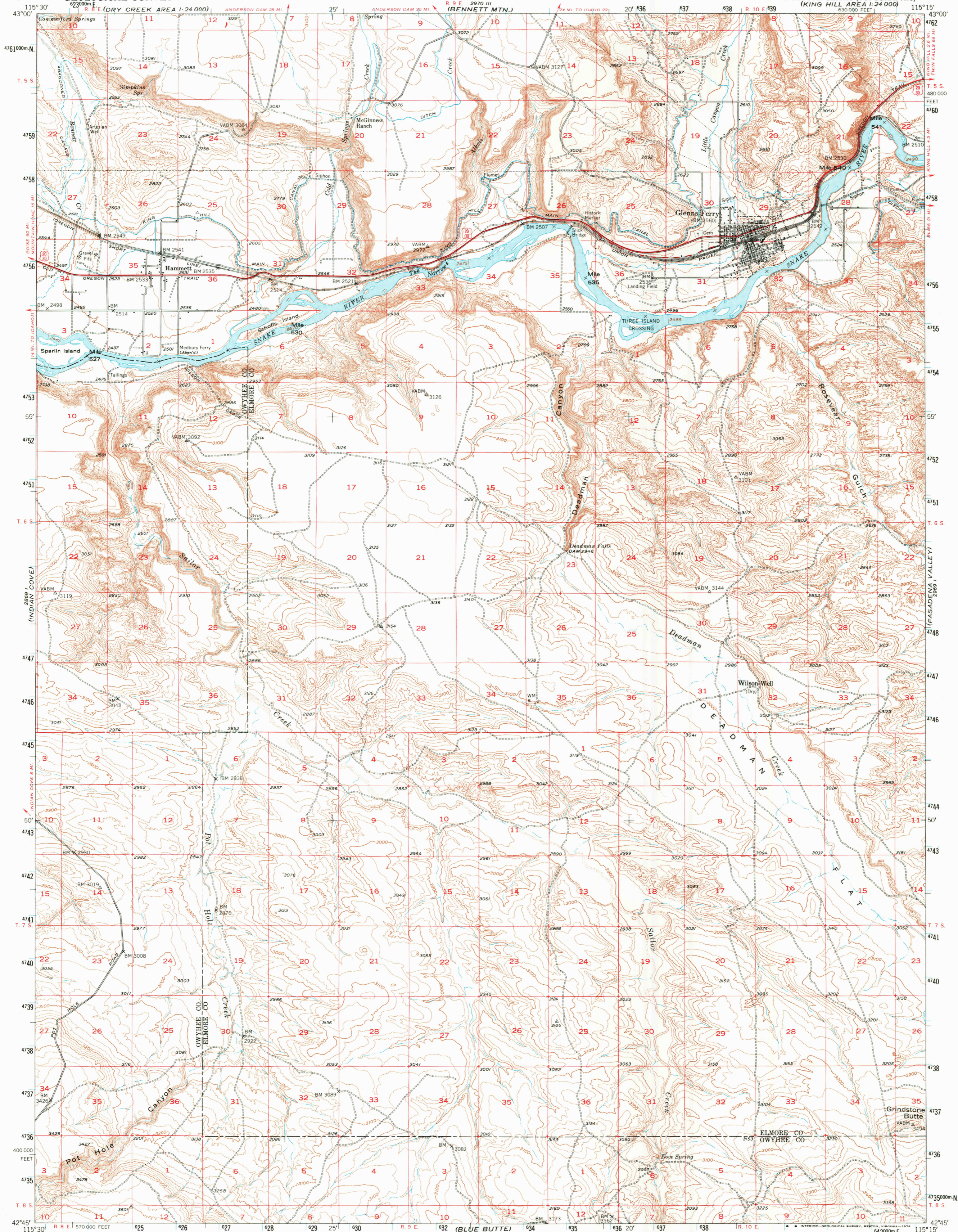
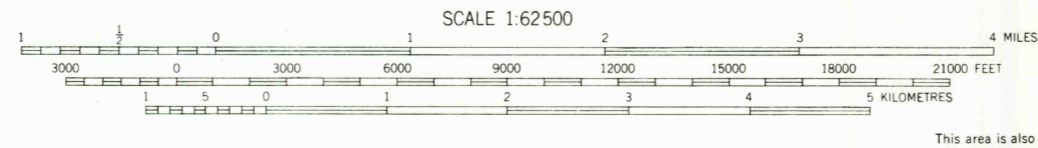


UNITED STATES
DEPARTMENT OF THE INTERIOR
GEOLOGICAL SURVEY

GLENN'S FERRY QUADRANGLE
IDAHO
15 MINUTE SERIES (TOPOGRAPHIC)
(KING HILL AREA 1:24,000)



Mapped, edited, and published by the Geological Survey
Control by USGS and USC&GS
Culture and drainage in part compiled from
aerial photographs taken 1946
Topography by plane-table surveys 1946-1948
Polyconic projection, 1927 North American datum
10,000-foot grid based on Idaho coordinate system,
west zone
1000-metre Universal Transverse Mercator grid ticks,
zone 11, shown in blue



ROAD CLASSIFICATION
Heavy-duty ———— + LANE (GLANE) Light-duty ————
Medium-duty ———— + LANE (GLANE) Unimproved dirt ————
U. S. Route ———— State Route ————

THIS MAP COMPLIES WITH NATIONAL MAP ACCURACY STANDARDS
FOR SALE BY U. S. GEOLOGICAL SURVEY, DENVER, COLORADO 80225, OR RESTON, VIRGINIA 22092
A FOLDER DESCRIBING TOPOGRAPHIC MAPS AND SYMBOLS IS AVAILABLE ON REQUEST

GLENN'S FERRY, IDAHO
N4245-W1515/15
1948
AMS 2969 IV-SERIES V793

USGS
Historical File
Topographic Division

OCT 20 1976