

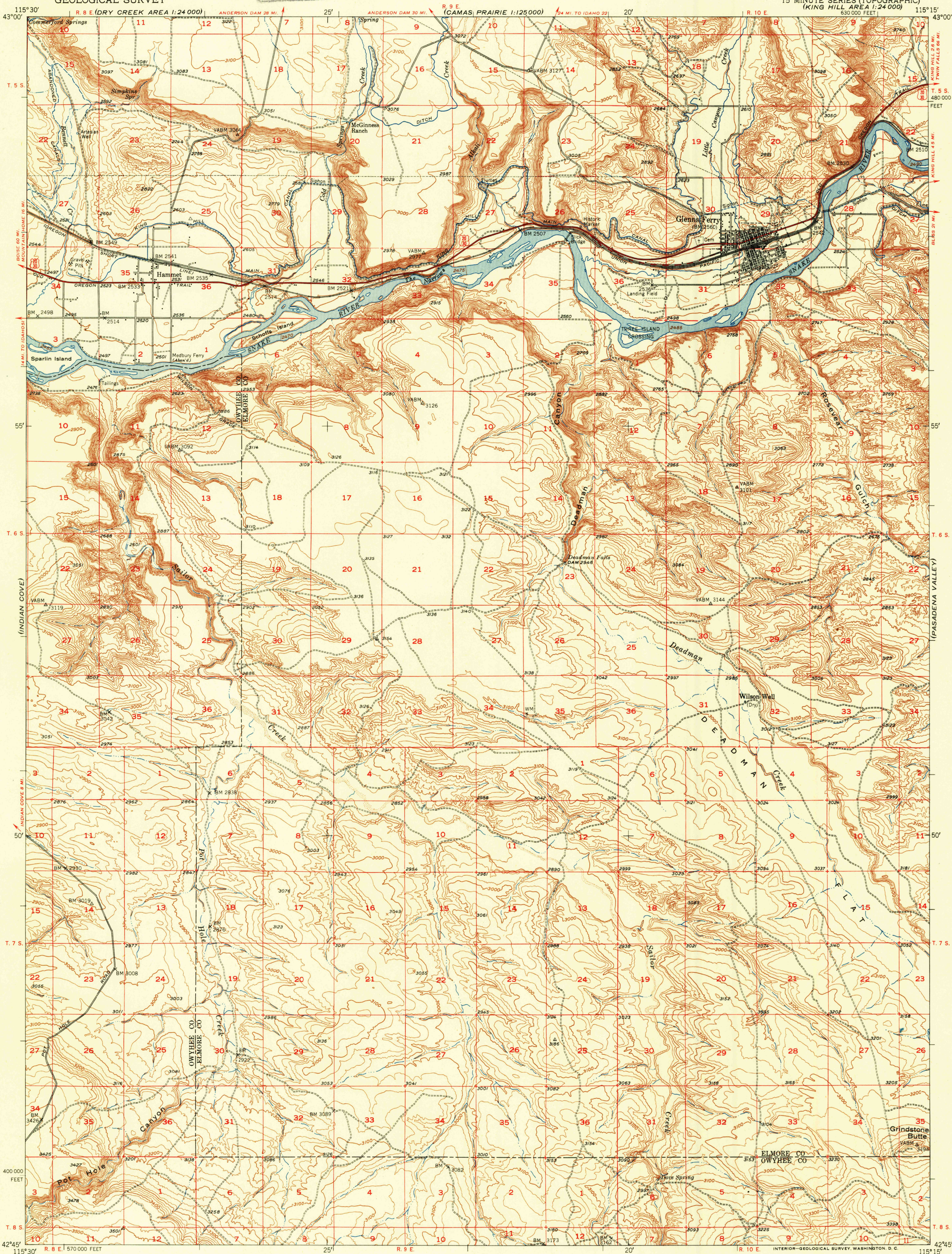
UNITED STATES  
DEPARTMENT OF THE INTERIOR  
GEOLOGICAL SURVEY

U.S.G.S.  
FILE COPY  
Inspection and Editing.

GLENN'S FERRY QUADRANGLE  
IDAHO

15 MINUTE SERIES (TOPOGRAPHIC)  
(KING HILL AREA 1:24 000)  
630 000 FEET

(KING HILL AREA)  
1:24 000

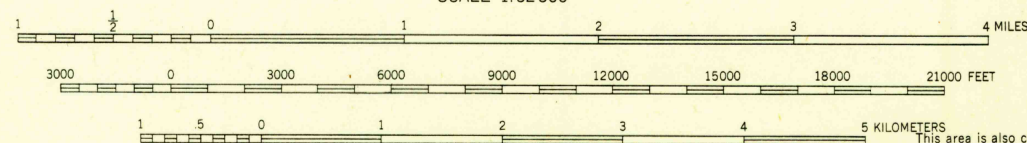
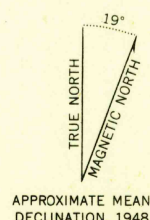


Mapped, edited, and published by the Geological Survey

Control by USGS and USC&GS

Culture and drainage in part compiled from  
aerial photographs taken 1946

Topography by plane-table surveys 1946-1948  
Polyconic projection. 1927 North American datum  
10,000-foot grid based on Idaho coordinate system,  
west zone

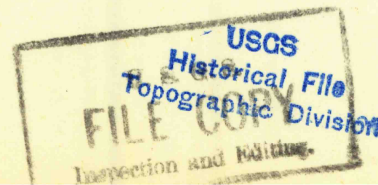


CONTOUR INTERVAL 25 FEET  
CONTOUR INTERVAL ON RIVER SURFACE 5 FEET  
DATUM IS MEAN SEA LEVEL

THIS MAP COMPLIES WITH NATIONAL MAP ACCURACY STANDARDS  
FOR SALE BY U. S. GEOLOGICAL SURVEY, FEDERAL CENTER, DENVER, COLORADO OR WASHINGTON 25, D. C.  
A FOLDER DESCRIBING TOPOGRAPHIC MAPS AND SYMBOLS IS AVAILABLE ON REQUEST

ROAD CLASSIFICATION

Heavy-duty...   
Medium-duty...   
Unimproved dirt...   
U. S. Route...   
State Route...



GLENN'S FERRY, IDAHO  
N4245-W11515/15

EDITION OF 1951

JAN 8 1952