

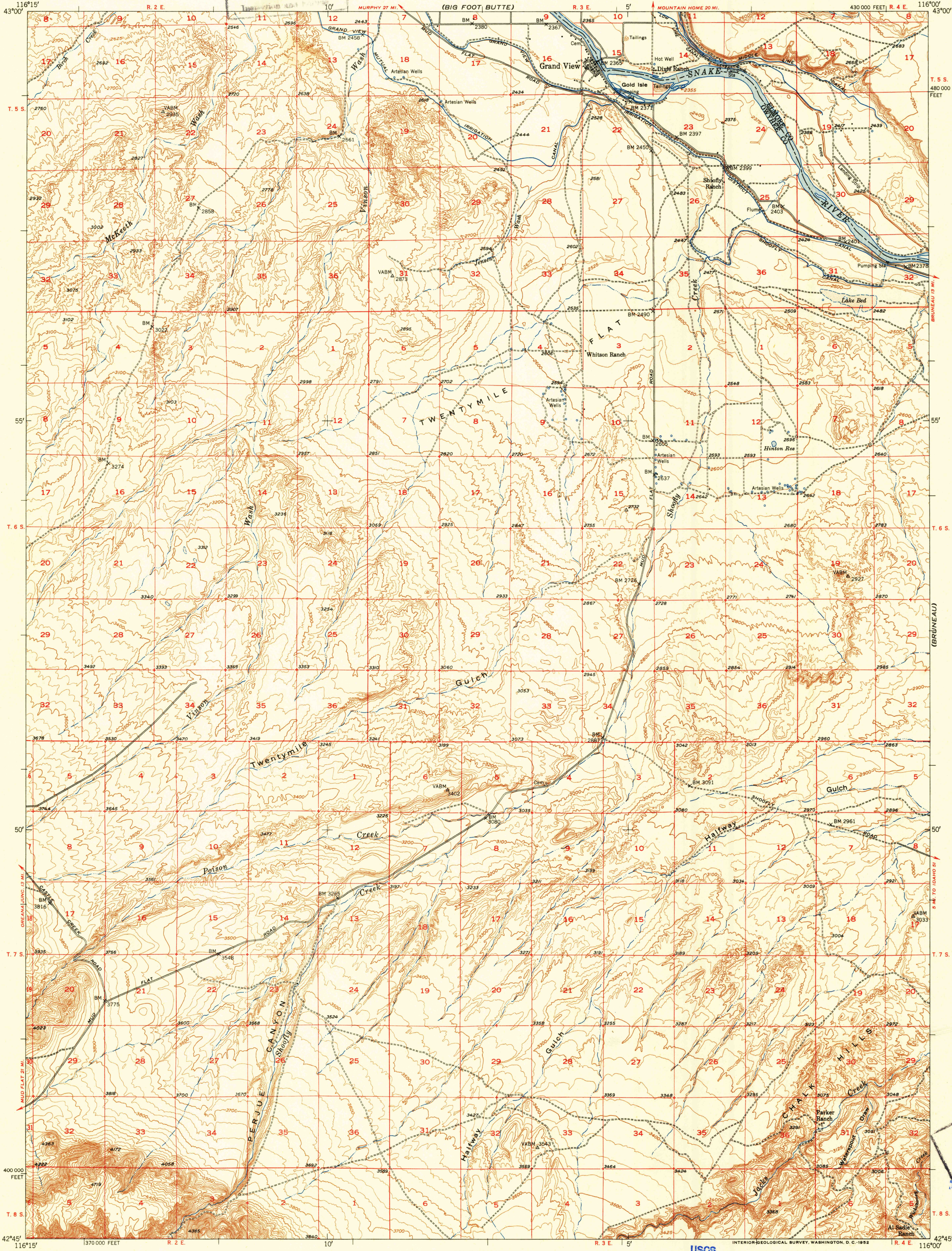
(OREANA)

UNITED STATES DEPARTMENT OF THE INTERIOR GEOLOGICAL SURVEY

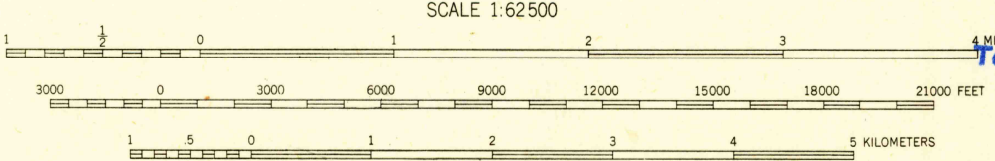
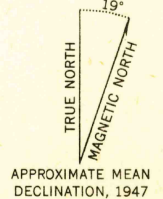
U.S.G.S. FILE COPY

GRAND VIEW QUADRANGLE IDAHO 15 MINUTE SERIES (TOPOGRAPHIC)

(MOUNTAIN HOME) 1:125,000



Mapped, edited, and published by the Geological Survey Control by USGS and USC&GS Culture and drainage in part compiled from aerial photographs taken 1946 Topography by plane-table surveys 1947 Polyconic projection. 1927 North American datum 10,000-foot grid based on Idaho coordinate system, west zone



USGS Historical File Topographic Division ROAD CLASSIFICATION

Heavy-duty	2 LANE 6 LANE	Light-duty
Medium-duty	2 LANE 6 LANE	Unimproved dirt
U.S. Route		State Route

This area is also covered by 1:24,000 scale maps of the Grand View, Vinson Wash, Perju Canyon, and Chalk Hills 7 1/2 minute quadrangles

GRAND VIEW, IDAHO N4245-W11600/15

FOR SALE BY U.S. GEOLOGICAL SURVEY, FEDERAL CENTER, DENVER, COLORADO OR WASHINGTON 25, D. C. A FOLDER DESCRIBING TOPOGRAPHIC MAPS AND SYMBOLS IS AVAILABLE ON REQUEST

1947

JUL 16 1952 2140