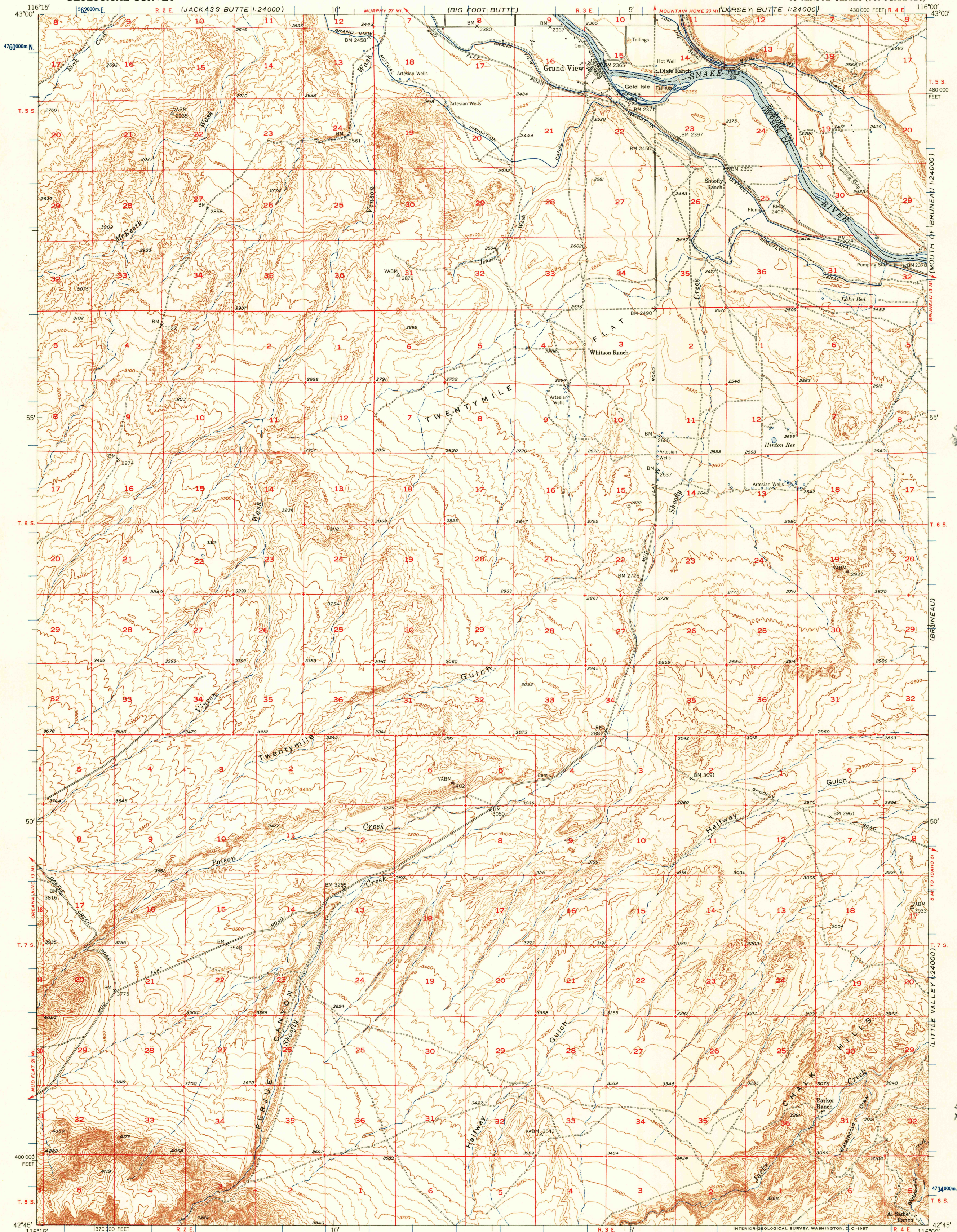


(OREANA)

UNITED STATES
DEPARTMENT OF THE INTERIOR
GEOLOGICAL SURVEY

GRAND VIEW QUADRANGLE
IDAHO
15 MINUTE SERIES (TOPOGRAPHIC)

(MOUNTAIN HOME)
1:125,000

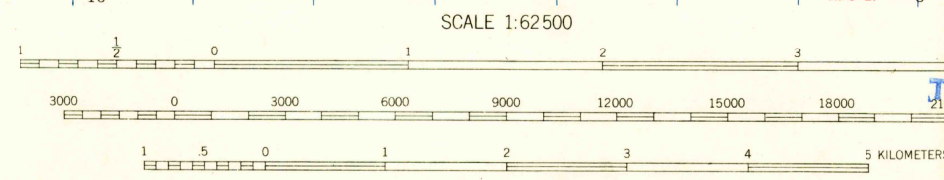
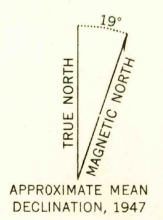


U.S.G.S.
FILE COPY

U.S.G.S.
FILE COPY
TOPOGRAPHIC DIVISION

Mapped, edited, and published by the Geological Survey
Control by USGS and USC&GS

Culture and drainage in part compiled from
aerial photographs taken 1946
Topography by plane-table surveys 1947
Polyconic projection. 1927 North American datum
10,000-foot grid based on Idaho coordinate system,
west zone
1000-meter Universal Transverse Mercator grid ticks,
zone 11, shown in blue



CONTOUR INTERVAL 25 FEET
CONTOUR INTERVAL ON RIVER SURFACE 5 FEET
DATUM IS MEAN SEA LEVEL

USGS
Historical File
Topographic Division

ROAD CLASSIFICATION

Heavy-duty	LANE 6 LANE	Light-duty	LANE 6 LANE
Medium-duty	LANE 6 LANE	Unimproved dirt	LANE 6 LANE

U.S. Route State Route

This area is also covered by 1:24,000 scale maps of
the Grand View, Vinson Wash, Perju Canyon, and
Chalk Hills 7 1/2 minute quadrangles

GRAND VIEW, IDAHO
N4245-W11600/15
1947

THIS MAP COMPLIES WITH NATIONAL MAP ACCURACY STANDARDS
FOR SALE BY U.S. GEOLOGICAL SURVEY, FEDERAL CENTER, DENVER, COLORADO OR WASHINGTON 25, D. C.
A FOLDER DESCRIBING TOPOGRAPHIC MAPS AND SYMBOLS IS AVAILABLE ON REQUEST

JUL 26 1951

3700