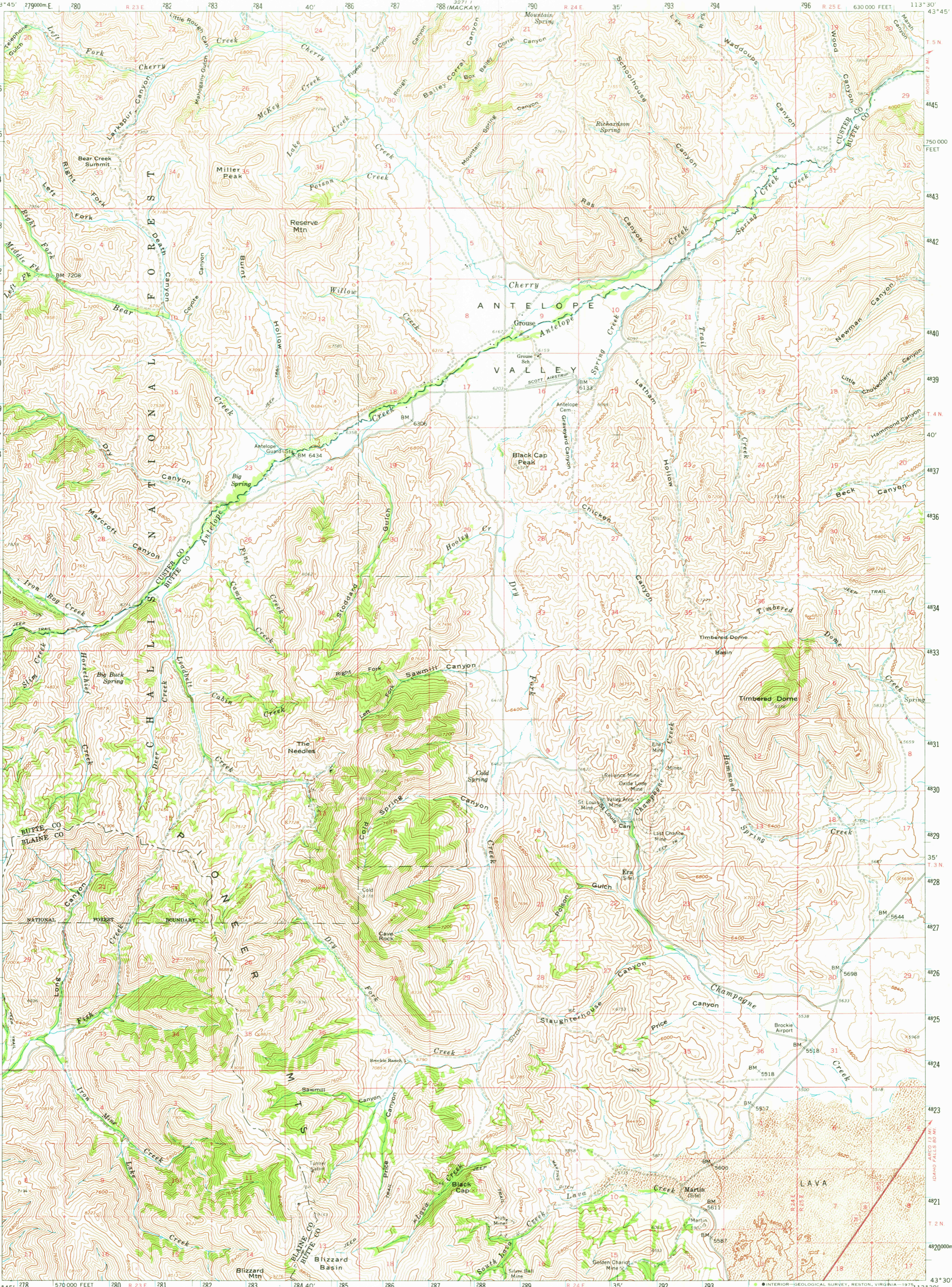


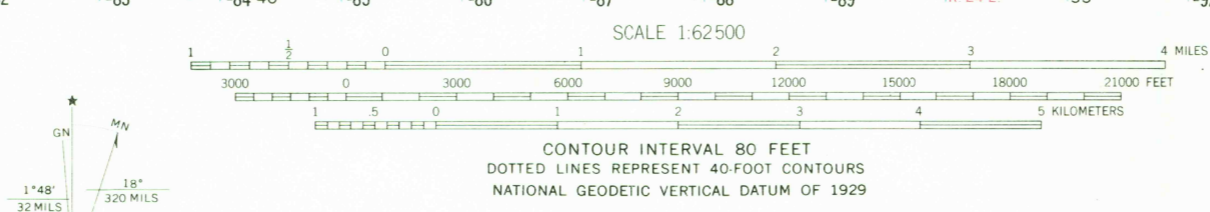
3271 IV
GROUSE BASIN
113° 45' 2790000 E 280 282 283 284 40' 286 287 288 (MACKAY) 290 R 24 E 35' 293 294
43° 45' 4847000 N
T. 5 N
4846
4845
4844
4843
4842
4841
4840
4839
4838
4837
4836
4835
4834
4833
4832
4831
4830
4829
4828
4827
4826
4825
4824
4823
4822
4821
4820000 N
43° 30' 113° 45' 2790000 E 280 282 283 284 40' 286 287 288 (MACKAY) 290 R 24 E 35' 293 294
2940000 E
113° 30' 43° 45'

UNITED STATES
DEPARTMENT OF THE INTERIOR
GEOLOGICAL SURVEY

GROUSE QUADRANGLE
IDAHO
15 MINUTE SERIES (TOPOGRAPHIC)



Mapped, edited, and published by the Geological Survey
Control by USGS and USC&GS
Topography from aerial photographs by photogrammetric methods
Aerial photographs taken 1957. Field check 1960
Polyconic projection. 1927 North American datum
10,000-foot grid based on Idaho coordinate system, central zone
1000-meter Universal Transverse Mercator grid ticks, zone 12, shown in blue
Dashed land lines indicate approximate locations



ROAD CLASSIFICATION
Heavy duty ——— Light duty ———
Unimproved dirt - - - - -
U.S. Route



THIS MAP COMPLIES WITH NATIONAL MAP ACCURACY STANDARDS
FOR SALE BY U.S. GEOLOGICAL SURVEY, DENVER, COLORADO 80225, OR RESTON, VIRGINIA 22092
A FOLDER DESCRIBING TOPOGRAPHIC MAPS AND SYMBOLS IS AVAILABLE ON REQUEST



GROUSE, IDAHO
N4330—W11330/15
1960
AMS 3271 II—SERIES V793

USGS
Historical File
Topographic Division

FEB 7 1975

2730