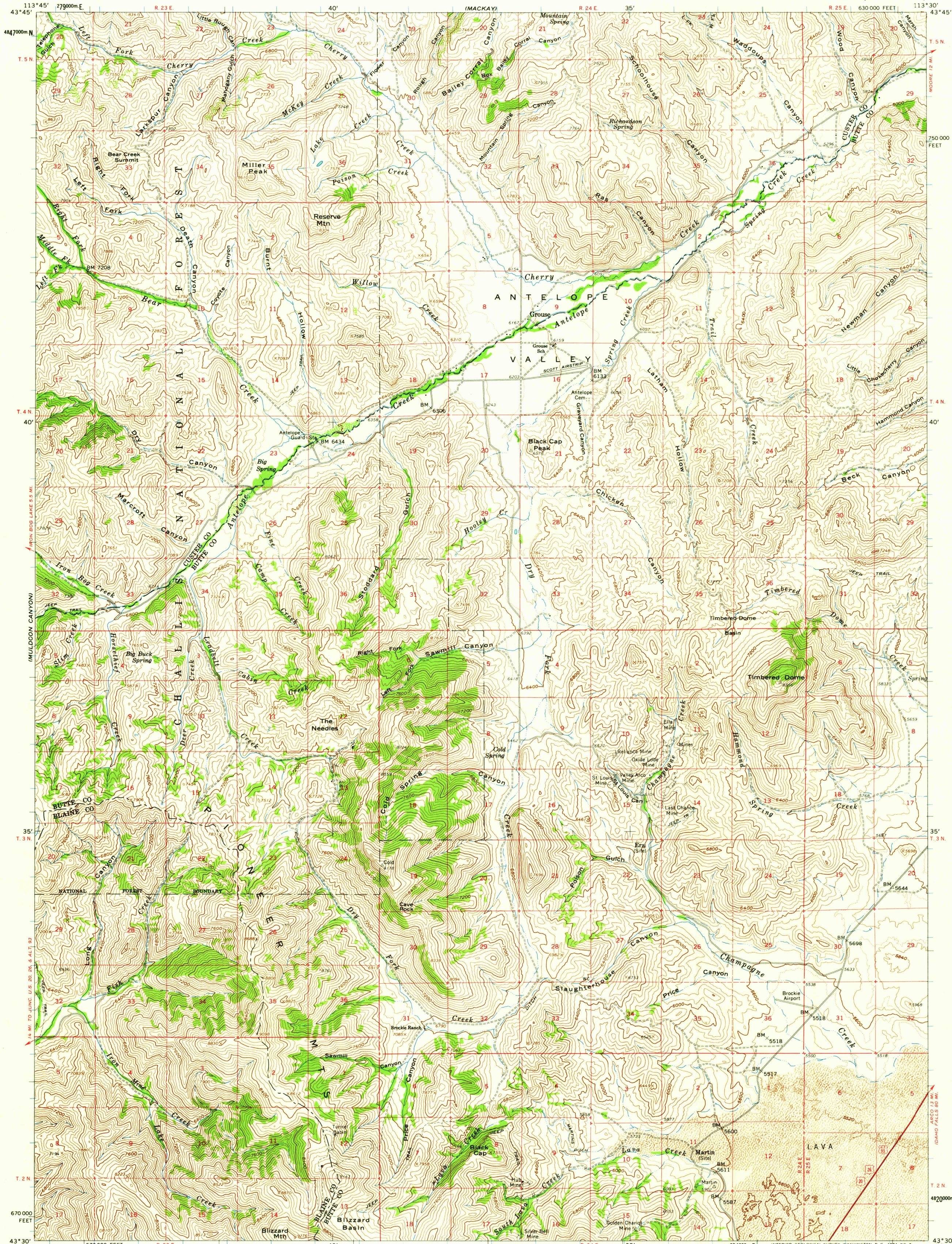


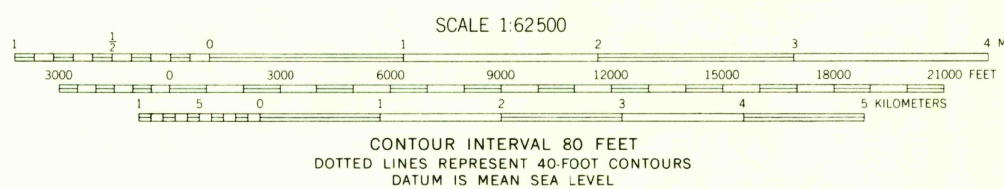
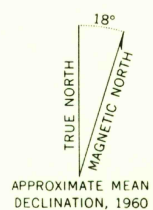
COPPER BASIN

UNITED STATES
DEPARTMENT OF THE INTERIOR
GEOLOGICAL SURVEY

GROUSE QUADRANGLE
IDAHO
15 MINUTE SERIES (TOPOGRAPHIC)



Mapped, edited, and published by the Geological Survey
Control by USGS and USC&GS
Topography from aerial photographs by photogrammetric methods
Aerial photographs taken 1957. Field check 1960
Polyconic projection. 1927 North American datum
10,000-foot grid based on Idaho coordinate system, central zone
1000-meter Universal Transverse Mercator grid ticks,
zone 12, shown in blue
Dashed land lines indicate approximate locations



USGS
Historical File
Topographic Division

ROAD CLASSIFICATION
Heavy duty
Light duty
Unimproved dirt
U.S. Route



GROUSE, IDAHO
N4330-W11330/15

1960

USGS
FILE COPY
TOPOGRAPHIC DIVISION

MAR - 5 1962

2585